



**Hamilton Road  
Twickenham**

£650,000

**Chase**Buchanan

## Key Features

- Viewings accompanied by Chase Buchanan
- Attractive period home
- Immaculate presentation
- Elegant living/dining room
- Modern fitted kitchen
- Two double bedrooms
- West-facing rear garden
- Excellent schools nearby
- Desirable cul-de-sac
- Easy access to amenities & station

## Description

This immaculate Victorian cottage combines some stylish features with contemporary fixtures and fittings close to Twickenham Green.

The ground floor has an elegant living/dining room with an original fireplace leading into a modern fitted kitchen. Upstairs are two generous double bedrooms and a luxury bathroom.

The west-facing, landscaped garden is secluded, with a patio and 'ever-green grass' perfect for 'al-fresco' dining and relaxing.

The stylish interior has been carefully considered as an integral part of the overall design with a sophisticated décor. With high-specification fixtures & fittings, the bespoke kitchen has smart units and integrated appliances plus plenty of storage options throughout.

Hamilton Road is a desirable cul-de-sac close to Twickenham Green with its eclectic array of shops and restaurants and some outstanding local schools including St Richard Reynolds School and Twickenham Primary Academy, rated 'Outstanding' by Ofsted. Central Twickenham provides further amenities, including parks and riverside walks and regular direct trains into London Waterloo, whilst nearby Richmond and Kingston provide more comprehensive amenities. With easy access to the M3/M25 motorways, Heathrow Airport and sports/leisure facilities.

To arrange an appointment to view, please call the vendors' sole agent Chase Buchanan.

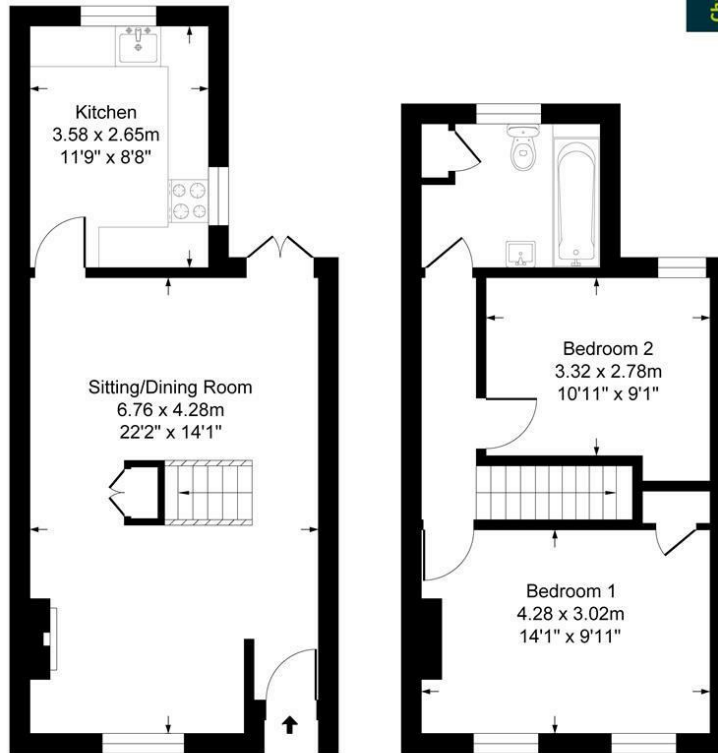




# Hamilton Road

Approx. Gross Internal Floor Area  
73.2 Sq M - 788 Sq Ft

ChaseBuchanan



Ground Floor  
Approximate Floor Area  
411.82 sq.ft  
(38.26 sq.m)

First Floor  
Approximate Floor Area  
376.41 sq.ft  
(34.97 sq.m)

Illustration for identification purposes only, measurements are approximate, not to scale.

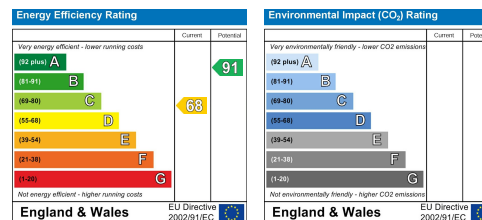
For more information or to book a viewing, please contact:

**020 8744 0101**

twickenham@chasebuchanan.london

4 York Street, TW1 3LD

Care has been taken in the preparation of these particulars, however, their accuracy is not guaranteed and they do not form part of any contract. Measurements stated must be considered maximum.



**ChaseBuchanan**