



**Queens Road
Twickenham**

£425,000

ChaseBuchanan

Key Features

- Viewings accompanied by Chase Buchanan
- Period conversion flat
- First floor
- Bright, neutral décor
- Modern kitchen and bathroom
- One double bedroom
- Character features
- Central Twickenham
- Close to amenities
- Chain free

Description

This first-floor period apartment is located in the heart of Twickenham. With easy access to the high street and station, whilst enjoying the delights of Church Street and the riverside, both just around the corner.

Well presented throughout with a spacious living room, modern kitchen, double bedroom and bathroom.

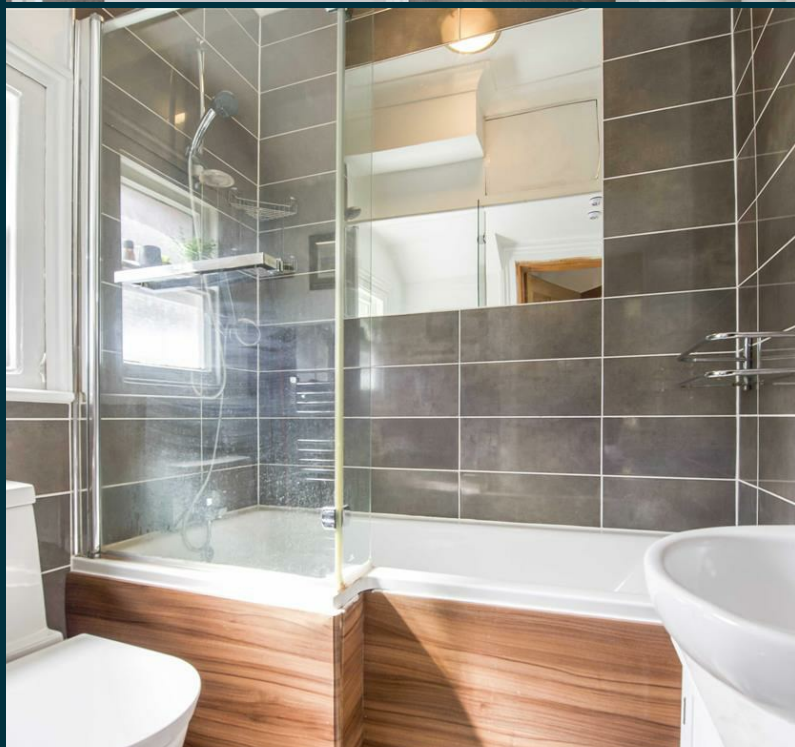
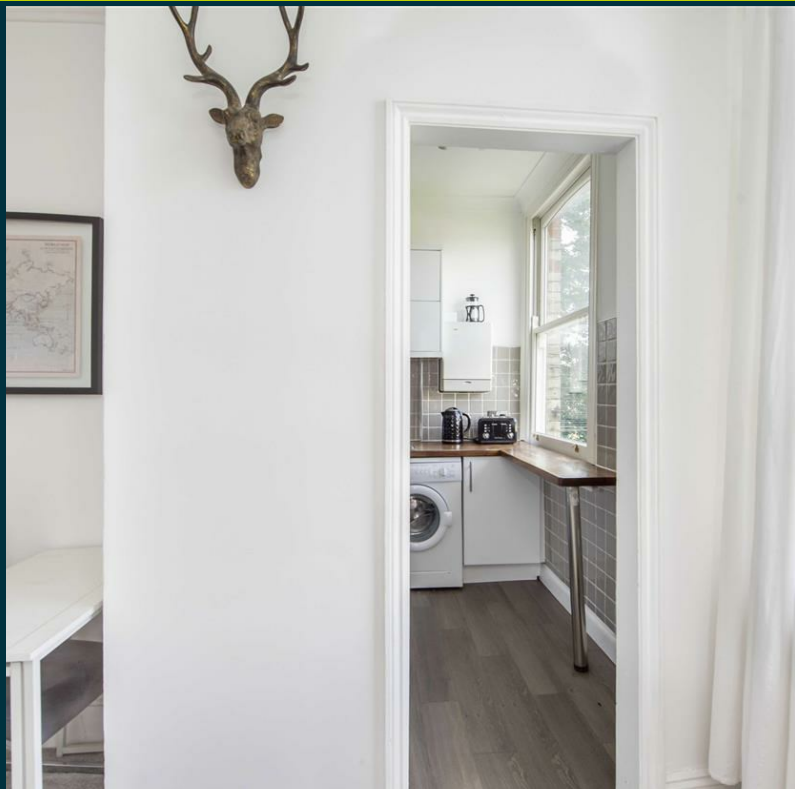
Further benefits include, double glazing, gas central heating and no onward chain.

Queens Road is ideally located to take advantage of all that Twickenham has to offer, from the range of boutique shops in Church Street, to the ambient restaurants and delightful riverside pubs and walks. Situated within a pleasant walk to Marble Hill Park and within easy access to both Richmond and Kingston with comprehensive amenities. Commuter links are excellent with the station in close proximity providing direct services to London Waterloo, frequent bus routes and easy access to the M3/M25 motorways and Heathrow Airport.

Lease 149 years. Ground Rent TBC. Service Charge TBC. (All details concerning the terms of the lease and outgoings are subject to verification).

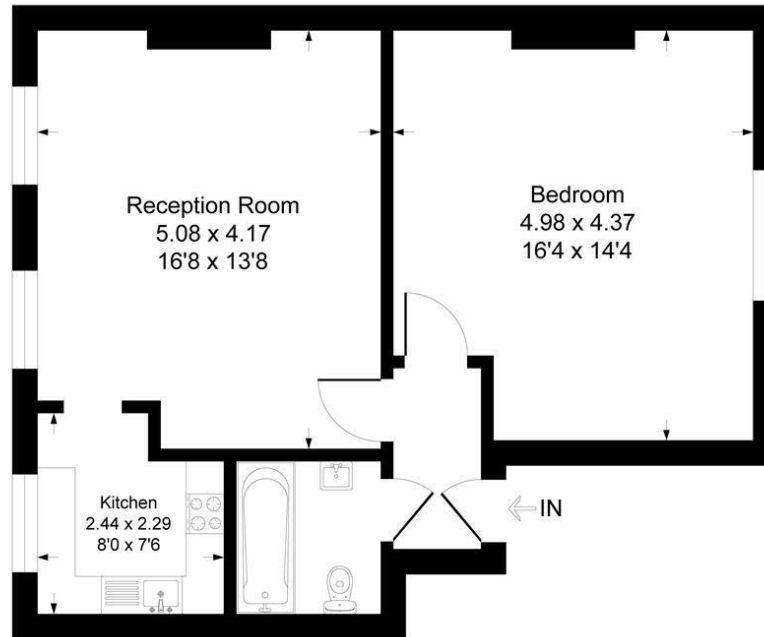
To arrange a viewing please contact the vendors' sole agents Chase Buchanan.





Queens Road TW1

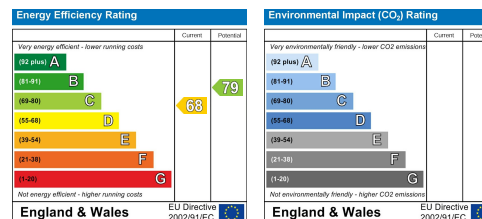
Approximate Gross Internal Floor Area = 53.6 sq m / 577 sq ft



First Floor

Illustration for identification purposes only, measurements are approximate, not to scale.

Care has been taken in the preparation of these particulars, however, their accuracy is not guaranteed and they do not form part of any contract. Measurements stated must be considered maximum.



For more information or to book a viewing, please contact:

020 8744 0101

twickenham@chasebuchanan.london

4 York Street, TW1 3LD

ChaseBuchanan