



**Amyand Park Road  
Twickenham**  
£1,395,000

**ChaseBuchanan**

## Key Features

- Viewings accompanied by Chase Buchanan
- Stunning town house in gated mews
- Fabulous kitchen/dining room & Orangery
- Four bedrooms & three bathrooms
- High specification throughout
- Attractive rear garden
- Off street parking
- Easy access to station & shops
- Excellent schools nearby
- Desirable location

## Description

A stunning town house in a very desirable mews in Twickenham, with well-proportioned living spaces over three levels.

Extended and improved, this immaculate home is very well presented with a pleasing décor. The ground floor has a fabulous kitchen/dining room and 'Orangery' with wide, bi-folding doors out to the garden and a large roof lantern, maximising the light. Plus, a very useful utility room, a hand built bespoke 'boot' room and a W.C.

The first floor provides an elegant reception room with a feature fireplace, a spacious double bedroom and a luxury shower room/W.C. Upstairs are two further double bedrooms and a good size single bedroom, with a family bathroom and a smart en-suite shower room to the main bedroom.

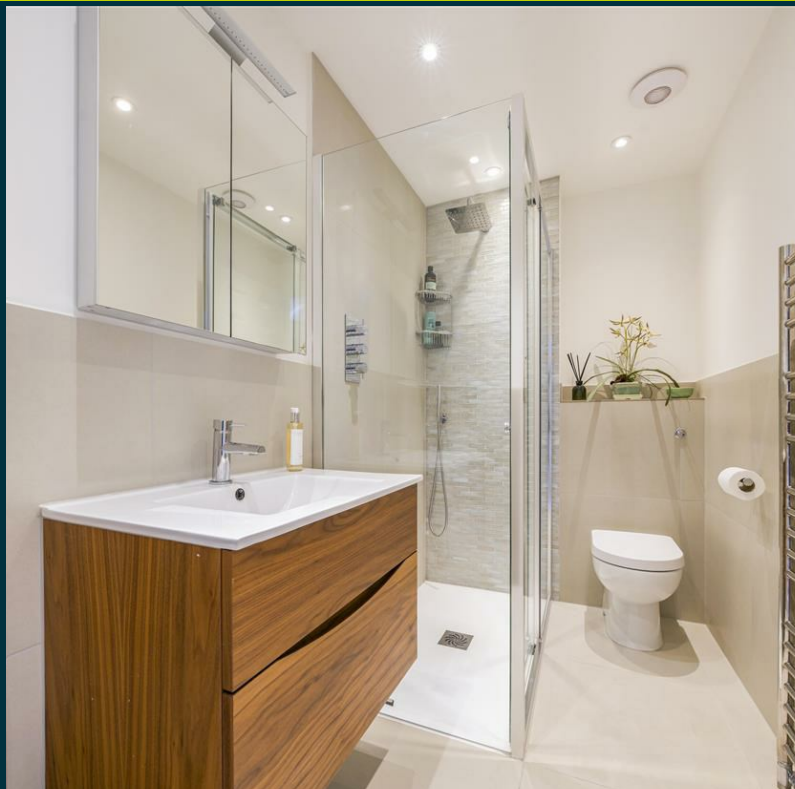
Outside is an attractive, secluded garden with mature shrubs and trees and two patio areas, providing a lovely spot to relax or entertain plus off-street parking to the front and further visitors parking.

The stylish interior has been carefully considered as an integral part of the overall design with high-specification fixtures and fittings. The bespoke shaker kitchen by 'Tom Howley' has plenty of storage options and integrated Siemens & Neff appliances, with Italian stone flooring and underfloor heating. With plenty of storage throughout and an abundance of natural light, this home provides the perfect balance of flexible space and comfort.

Candler Mews is a sought-after, private, gated mews, ideally located for all the local amenities. Situated within a pleasant walk to Marble Hill Gardens along the riverside and within easy access to both Teddington and Richmond. Commuter links are excellent with Twickenham station providing direct services to London Waterloo and easy access to the M3/M25 motorways and Heathrow Airport. A variety of schools, both private and state-run, are nearby, including St Richard Reynolds School and St Mary's Church of England Primary School rated 'outstanding' by Ofsted.

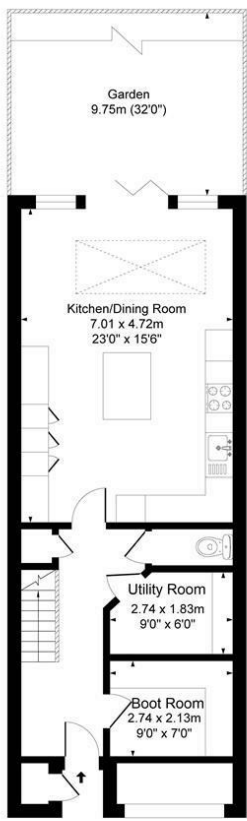
Properties of this quality are in demand.



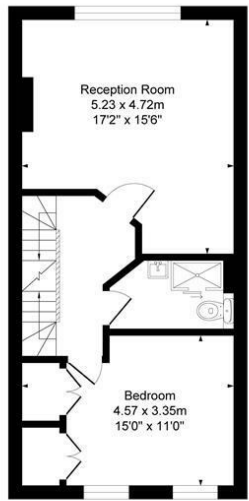


# Candler Mews TW1

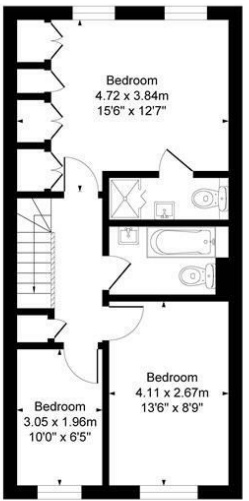
Approx. Gross Internal Floor Area  
156.2 Sq M - 1682 Sq Ft



Ground Floor  
Approximate Floor Area  
622.58 sq.ft  
(57.83 sq.m)



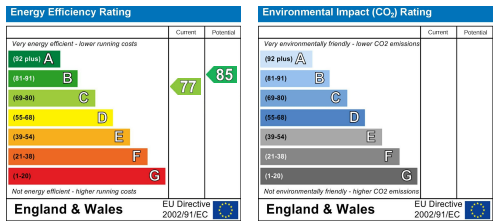
First Floor  
Approximate Floor Area  
529.58 sq.ft  
(49.19 sq.m)



Second Floor  
Approximate Floor Area  
529.58 sq.ft  
(49.19 sq.m)

Illustration for identification purposes only, measurements are approximate, not to scale.

Care has been taken in the preparation of these particulars, however, their accuracy is not guaranteed and they do not form part of any contract. Measurements stated must be considered maximum.



For more information or to book a viewing, please contact:

**020 8744 0101**

twickenham@chasebuchanan.london

4 York Street, TW1 3LD

**ChaseBuchanan**