



**Whitton Road
Twickenham**

£600,000

ChaseBuchanan

Key Features

- Viewings accompanied by Chase Buchanan
- Luxury converted apartment
- Ground floor
- High specification throughout
- Sophisticated kitchen
- Two double bedrooms
- Ready to move into
- Private courtyard garden
- Energy efficient
- Resident may apply for 1 parking permit

Description

A luxury ground-floor apartment located in central Twickenham with a stunning, private courtyard garden within easy access to the river, open green spaces and parks.

This fabulous apartment has a spacious living room/kitchen with plenty of natural light, two double bedrooms, a smart bathroom and a very attractive private garden with an 'ever-green' feature wall, plus a 'Brighton' bike shed with a living green roof and communal bike space in the hall. With the right to apply for 1 resident parking permit.

Designed to maximise the space and light and energy efficient, these contemporary apartments offer high-quality fixtures and fittings, with sophisticated, fully fitted 'Rot Punkt' German kitchens and 'Grohe' bathrooms. Including, remote controlled mood lighting, a 'Qooker' tap, 'Nest' smart thermostats, 'Grohe' rainwater showers, engineered Oak flooring, solar panels, video entry phone, bike storage and parking permits available to purchase for flats 1 & 2.

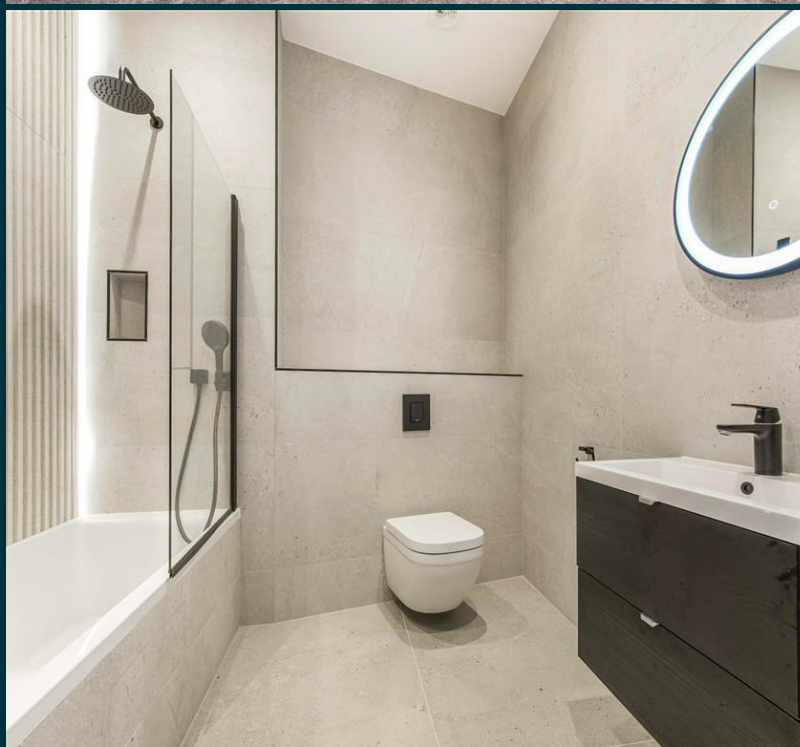
Whitton Road is ideally located to take advantage of all that Twickenham has to offer, from the range of boutique shops in Church Street, to the ambient restaurants and delightful riverside pubs and walks. Situated within a pleasant walk to Marble Hill Gardens along the riverside and within easy access of both St Margarets and Richmond. Commuter links are excellent with Twickenham station providing direct services to London, Waterloo and easy access to the M3/M25 motorways and Heathrow Airport. The local area is well served for schools, both private and state-run.

Ready to move in, these fabulous apartments could be an ideal first time buy or investment purchase.

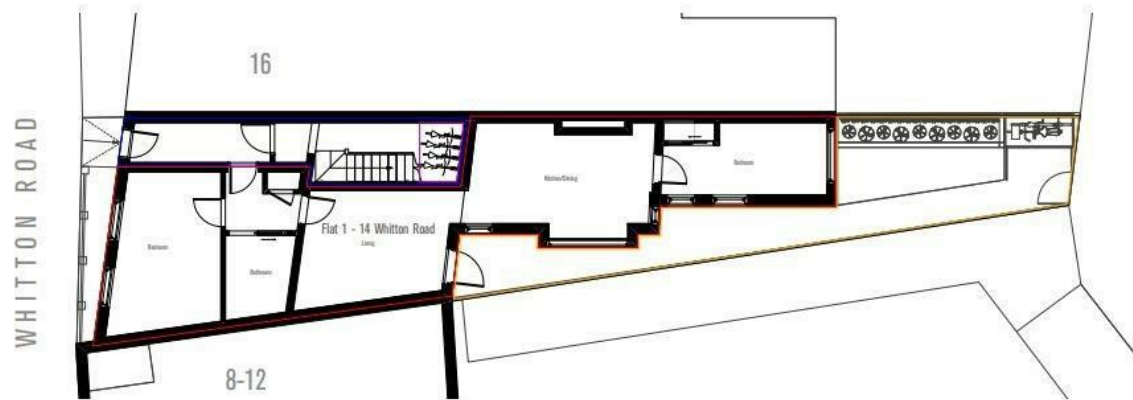
Share of Freehold - Lease 999 years. Ground Rent - Nil. Service Charge - £835.00 pa Estimated.
(All details concerning the terms of the lease and outgoings are subject to verification).

To arrange a viewing, please call the vendors' Sole agent Chase Buchanan.





- Flat 1 Demise
- Flat 1 Amenity Space
- Communal Circulation Area
- Cycle Storage



Flat 1 (Ground Floor) Whitton Road, Twickenham, London. TW1 1BJ

Flat 1 Demise Plan
Scale 1:100 @A3
Flat 1 GIA = 62.7sqm

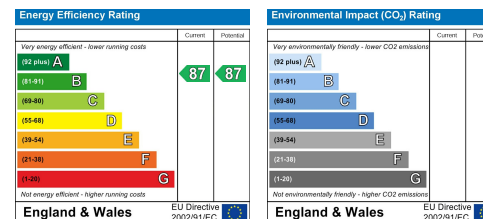
For more information or to book a viewing, please contact:

020 8744 0101

twickenham@chasebuchanan.london

4 York Street, TW1 3LD

Care has been taken in the preparation of these particulars, however, their accuracy is not guaranteed and they do not form part of any contract. Measurements stated must be considered maximum.



ChaseBuchanan