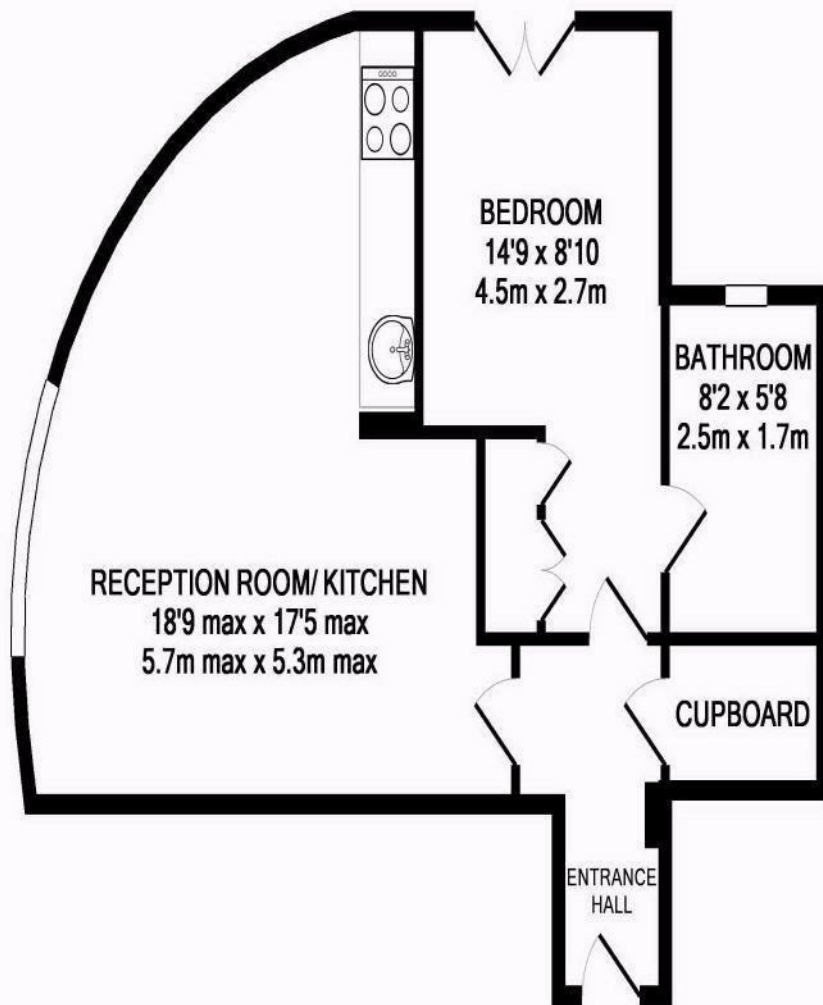


**Windlesham Mews  
Hampton Hill  
TW12 1RU**

£1,350 PCM

**ChaseBuchanan**





TOTAL APPROX. FLOOR AREA 471 SQ.FT. (43.8 SQ.M.)  
Made with Metropix ©2011

| Energy Efficiency Rating                    |   | Current | Desired | Environmental Impact (CO <sub>2</sub> ) Rating                  |   | Current | Desired |
|---|---|---------|---------|---|---|---------|---------|
| Very energy efficient - lower running costs |   |         |         | Very environmentally friendly - lower CO <sub>2</sub> emissions |   |         |         |
| 21-27kWh                                    | A |         |         | 10-15kWh  | A |         |         |
| 18-20kWh                                    | B |         |         | 15-19kWh  | B |         |         |
| 15-17kWh                                    | C | 75      | 79      | 19-23kWh  | C |         |         |
| 12-14kWh                                    | D |         |         | 23-27kWh  | D |         |         |
| 9-11kWh                                     | E |         |         | 27-31kWh  | E |         |         |
| 6-8kWh                                      | F |         |         | 31-35kWh  | F |         |         |
| 3-5kWh                                      | G |         |         | 35-39kWh  | G |         |         |

- In the heart of Hampton Hill
- Open plan kitchen
- Allocated parking
- Council Tax - C
- First floor apartment
- One double bedroom
- Close to Bushy Park
- EPC - C

A modern first floor, one bedroom apartment in the heart of Hampton Hill.

A short stroll around the corner and you will find the convenience of Hampton Hill High Street, Bushy Park and the delights of Teddington only moments away. Parking will not be a problem as you have allocated parking. For commuters, Fulwell station is only a short stroll away.

This property is finished to a high standard throughout. Its bright and spacious open plan lounge and kitchen. The bedroom is a good sized double with wardrobe space and the bathroom is modern.

This is a unique apartment will tick a lot of boxes and everything you could need is on your doorstep.

Chase Buchanan are bonded members of ARLA Propertymark.

For more information or to book a viewing, please contact:

020 8941 7576

**ChaseBuchanan**

101 High Street, Hampton Hill, TW12 1NJ