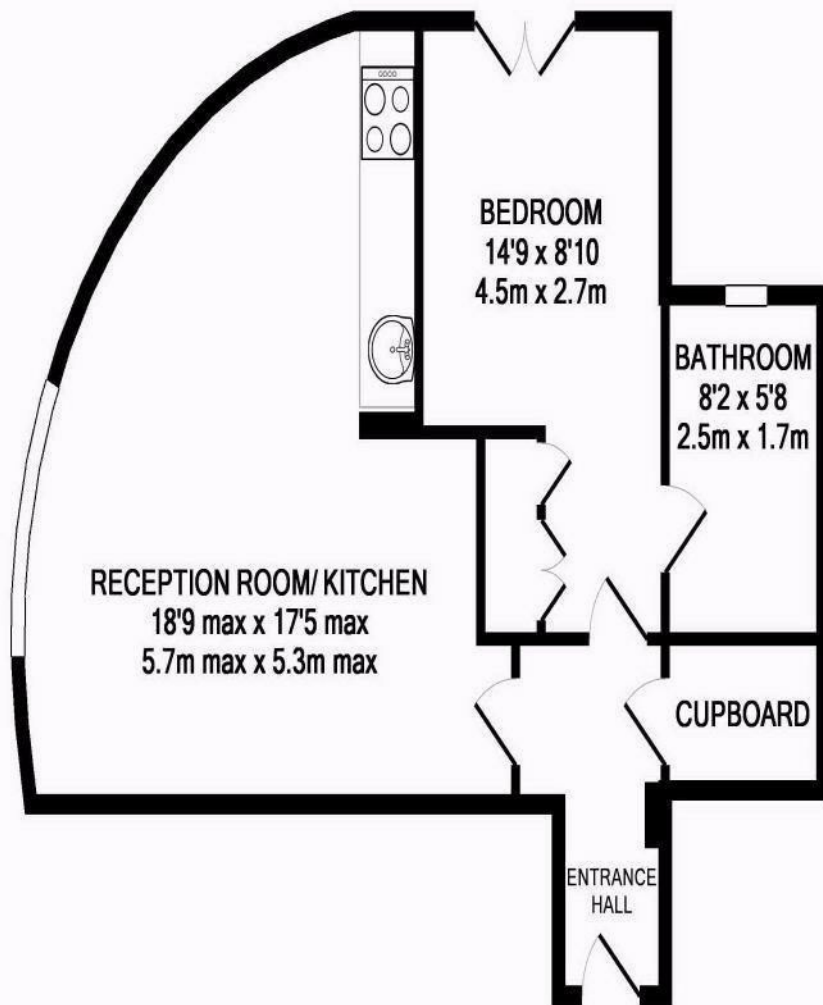


**Windlesham Mews
Hampton Hill
TW12 1RU**

£1,350

ChaseBuchanan





TOTAL APPROX. FLOOR AREA 471 SQ.FT. (43.8 SQ.M.)
 Made with Metropix ©2011

Energy Efficiency Rating		Environmental Impact (CO ₂) Rating	
Current	Desired	Current	Desired
75	79		

- In the heart of Hampton Hill
- Open plan kitchen
- Allocated parking
- First floor apartment
- One double bedroom
- Close to Bushy Park

A modern first floor, one bedroom apartment in the heart of Hampton Hill.

A short stroll around the corner and you will find the convenience of Hampton Hill High Street, Bushy Park and the delights of Teddington only moments away. Parking will not be a problem as you have allocated parking. For commuters, Fulwell station is only a short stroll away.

This property is finished to a high standard throughout. Its bright and spacious open plan lounge and kitchen. The bedroom is a good sized double with wardrobe space and the bathroom is modern.

This is a unique apartment will tick a lot of boxes and everything you could need is on your doorstep.

Chase Buchanan are bonded members of ARLA Propertymark.

For more information or to book a viewing, please contact:

020 8941 7576

ChaseBuchanan

101 High Street, Hampton Hill, TW12 1NJ