

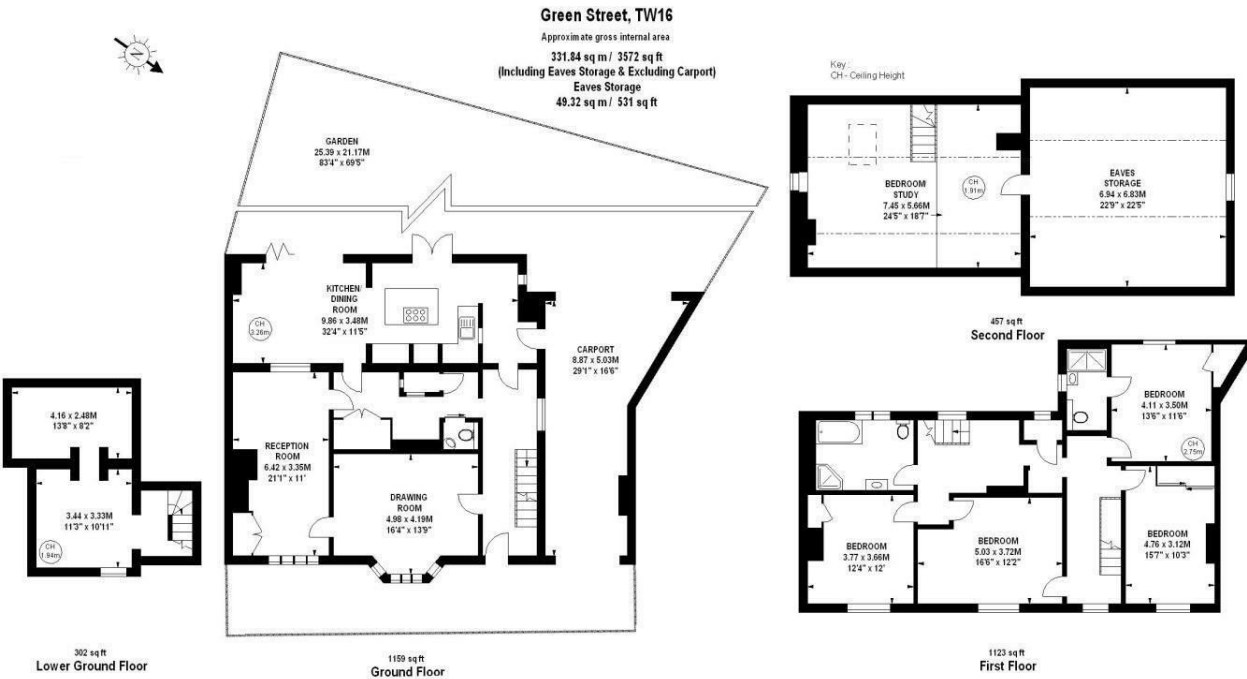
**Green Street
Sunbury-On-Thames
TW16 6RE**

£3,500

 **Chase
Buchanan**



- Stunning period home
- Landscaped gardens
- Three reception rooms
- Carport
- Four double bedrooms
- Versatile accommodation
- Beautifully presented
- Stones throw to the River Thames



With over 3500 square feet, this charming family home is full of character and was originally a coach house for the fire service in the 1700's. The property has many period features and is within a short walk of the River Thames.

The ground floor has a bright entrance hall, dining room with feature bay windows, fireplace and original flooring, adjoining reception room with feature fireplace and original flooring, bright and contemporary kitchen with an exposed brick fireplace, integrated appliances and a stunning breakfast room with feature bi-folding doors, downstairs W.C and storage room.

The first floor has a large master bedroom with modern en-suite shower room, two double bedrooms, one with a feature fireplace and one with built in storage, fourth double bedroom and a modern family bathroom. On the top floor there is a large home office and storage facilities. To the lower ground floor there is a great space for a cinema room or wine cellar.

Outside the property benefits from one of the most beautiful architecturally designed landscape gardens, with a green house, vegetable patches and a number of fruit trees which you can access from the kitchen and family room or through the carport which can store multiple vehicles.

Chase Buchanan are bonded members of ARLA PropertyMark.

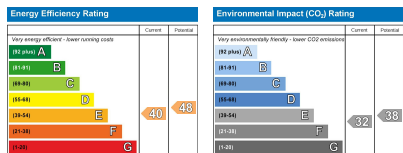
For more information or to book a viewing, please contact:

020 8941 7576

hamptonhill@chasebuchanan.london



101 High Street, Hampton Hill, TW12 1NJ



Care has been taken in the preparation of these particulars, however, their accuracy is not guaranteed and they do not form part of any contract. Measurements stated must be considered maximum.