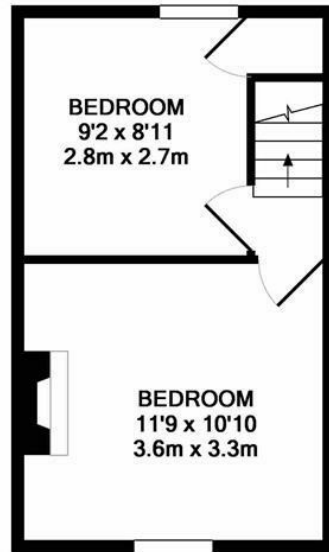
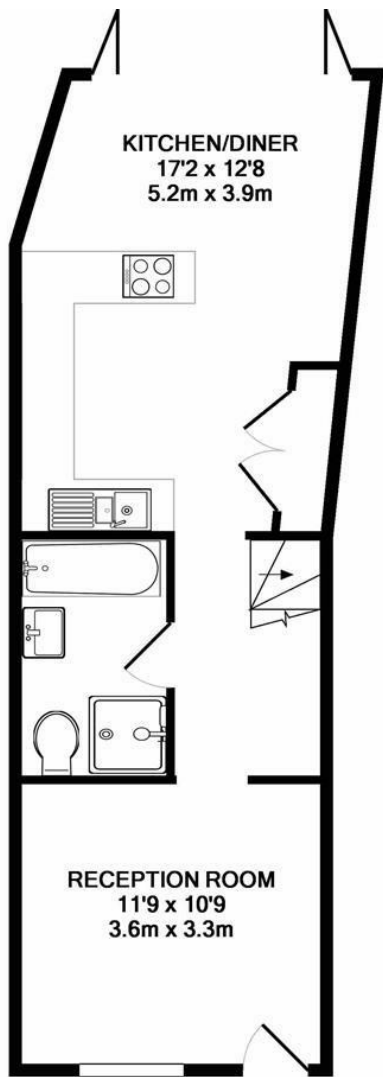


**Uxbridge Road
Hampton Hill
TW12 3AD**

£575,000

ChaseBuchanan

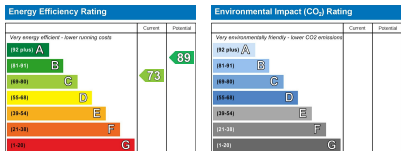




GROUND FLOOR
APPROX. FLOOR
AREA 454 SQ.FT.
(42.2 SQ.M.)

1ST FLOOR
APPROX. FLOOR
AREA 238 SQ.FT.
(22.2 SQ.M.)

TOTAL APPROX. FLOOR AREA 693 SQ.FT. (64.4 SQ.M.)
Made with Metropix ©2018



- Viewings accompanied by Chase Buchanan
- Two double bedrooms
- Wood burner
- Period property
- Large rear garden
- Good transport links
- Good schools close by
- Council Tax band D

Chase Buchanan are pleased to offer a stylish two bedroom Victorian cottage, which has been extended and finished to a high standard. The layout has been designed and configured to optimise living space and has a contemporary feel throughout. To the ground floor there is a front reception room with wood flooring, shutter blinds and a log burner, a stylish bathroom, a kitchen/diner with bi-folding doors leading on to the impressive 70ft garden. To the first floor there are two good size double bedrooms.

Hampton Hill High Street is close by, offering an array of boutique shops and cafes plus a Sainsbury's food store. Transport links are good, with regular trains into London Waterloo and easy access to the M3 and M25 motorways plus there are also regular buses into both Richmond and Kingston town centres. There are many well-regarded state and private schools nearby, including Carlisle infants, Hampton Prep and Pre-Prep, Hampton Senior School and Lady Eleanor Holles School.

For more information or to book a viewing, please contact:

020 8941 7576

ChaseBuchanan

101 High Street, Hampton Hill, TW12 1NJ