

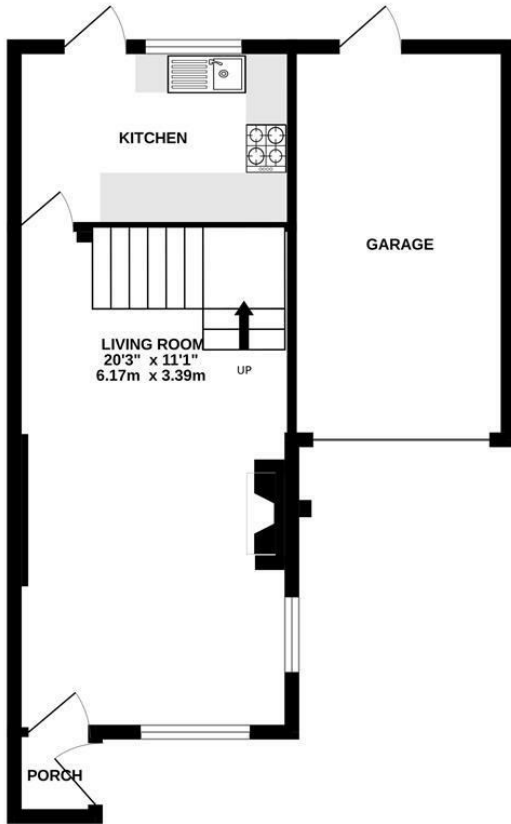
**Abbott Close  
Hampton  
TW12 3XR**

£425,000

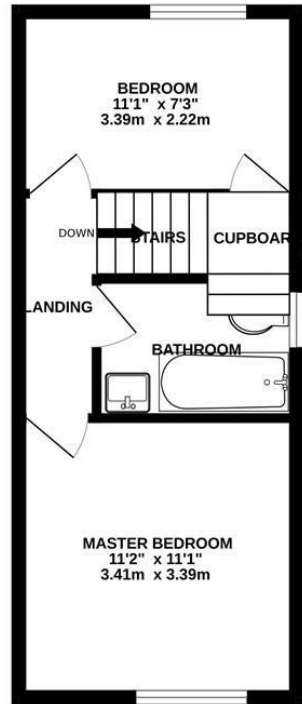
**ChaseBuchanan**



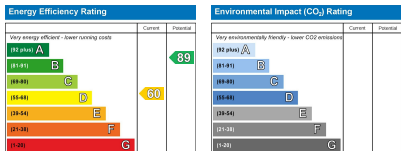
GROUND FLOOR  
445 sq.ft. (41.3 sq.m.) approx.



1ST FLOOR  
305 sq.ft. (28.4 sq.m.) approx.



TOTAL FLOOR AREA: 750 sq.ft. (69.7 sq.m.) approx.  
Produced solely for Chase Buchanan  
Made with Mettobox ©2024



- Viewings accompanied by Chase Buchanan
- West facing garden
- R70 bus route
- Two double bedrooms
- Driveway parking
- Private garage

A modern semi-detached family home with two double bedrooms and a lovely west facing private rear garden. The property is located in a quiet residential cul-de-sac and offers good access to sought-after local schools & amenities.

Upon entry the hall leads to the through reception room with separate sitting and dining reception areas and a central stair case with potential to add storage beneath. To the rear there is a fitted kitchen with doors that lead out to the private rear garden.

The first floor landing has access to loft space and doors to all rooms, both bedrooms are good sized double rooms and the rear aspect bedroom has a built in over stairs cupboard. There is also a fitted family bathroom.

Hampton Common green space is nearby and Hampton Village with its amenities and train station with direct access to London Waterloo being just a 15min walk or short bus ride away.

The property further benefits from an attached garage and off street parking.

For more information or to book a viewing, please contact:

020 8941 7576

**Chase Buchanan**

101 High Street, Hampton Hill, TW12 1NJ

Care has been taken in the preparation of these particulars, however, their accuracy is not guaranteed and they do not form part of any contract. Measurements stated must be considered maximum.