

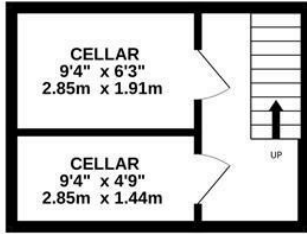
**Belgrade Road  
Hampton  
TW12 2AZ**

**£1,900 PCM**

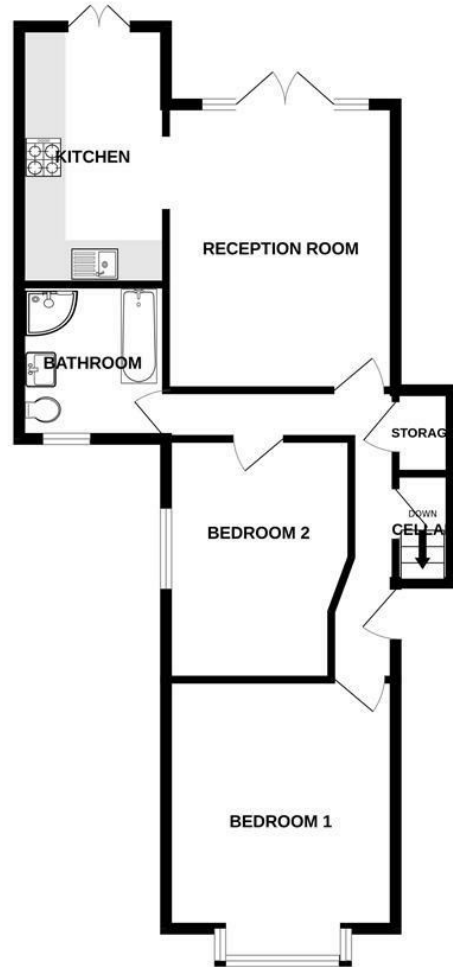
**ChaseBuchanan**



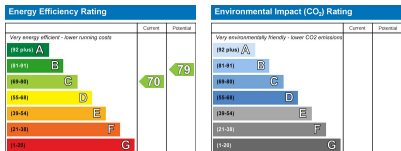
BASEMENT  
161 sq.ft. (15.0 sq.m.) approx.



GROUND FLOOR  
668 sq.ft. (62.0 sq.m.) approx.



TOTAL FLOOR AREA : 829 sq.ft. (77.0 sq.m.) approx.  
Produced solely for Chase Buchanan  
Made with Metropix ©2023



- In the heart of Hampton Village
- Private garden
- Bright and airy throughout
- Council Tax band - F
- Stunning two bedroom apartment
- Modern kitchen and bathroom
- Moments from Hampton station.
- EPC - C

Nestled in the heart of Hampton Village is this bright and airy two bedroom ground floor garden apartment in this beautiful period conversion.

With a good size living room and kitchen, both with doors leading to a large private garden, two double bedrooms, study room and a modern bathroom with separate shower room.

Only a short stroll to the Village, Hampton station, Waitrose and Bushy Park,

Chase Buchanan are bonded members of ARLA PropertyMark.

For more information or to book a viewing, please contact:

020 8941 7576

**Chase Buchanan**

101 High Street, Hampton Hill, TW12 1NJ

Care has been taken in the preparation of these particulars, however, their accuracy is not guaranteed and they do not form part of any contract. Measurements stated must be considered maximum.