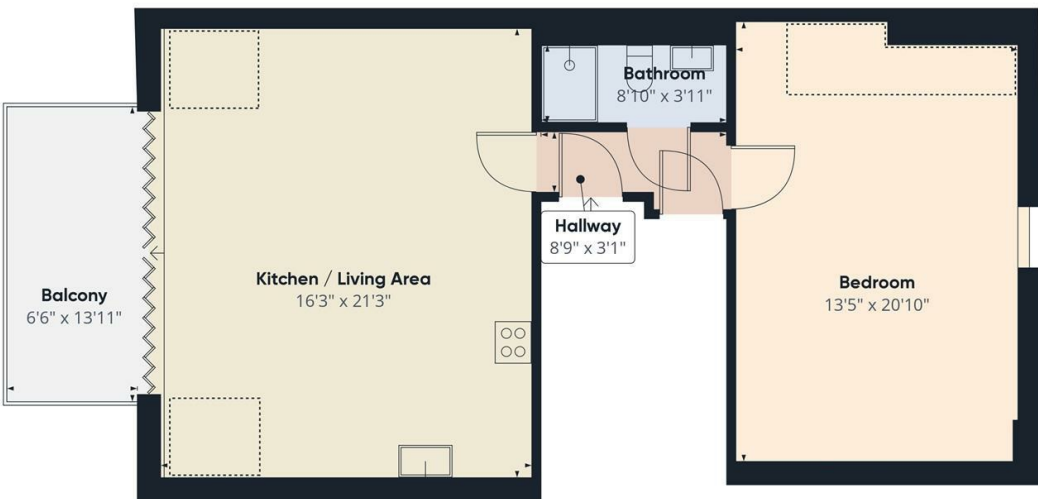


**The Mews, 53 High Street  
Hampton Hill  
TW12 1ND**

£1,850 PCM

**ChaseBuchanan**





Approximate total area<sup>1)</sup>  
707.99 ft<sup>2</sup>

Reduced headroom  
63.78 ft<sup>2</sup>

(1) Excluding balconies and terraces

☐ Reduced headroom  
(below 1.5m/4.92ft)

While every attempt has been made to ensure accuracy, all measurements are approximate, not to scale. This floor plan is for illustrative purposes only.

GIRAFFE360

- Luxury apartment
- One double bedroom
- Modern bathroom
- Allocated parking
- Council tax band - D
- Quiet, gated development
- Open plan kitchen/living room
- Private roof terrace
- Walking distance to Bushy Park
- EPC - D

Finished to a very high standard is this one double bedroom apartment with a private roof terrace.

As you step through the front door you will notice how light and bright this property is. The living room is open to the modern kitchen with bi-fold doors leading to a private terrace. The shower room is modern with auto lighting and a very good size bedroom. The property also benefits from allocated parking.

Located on a quiet gated mews but only moments from the delights of Hampton Hill high street and also Bushy Park.

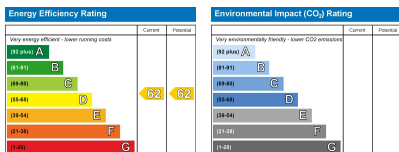
Chase Buchanan are bonded members of ARLA Propertymark.

For more information or to book a viewing, please contact:

020 8941 7576

**Chase**Buchanan

101 High Street, Hampton Hill, TW12 1NJ



Care has been taken in the preparation of these particulars, however, their accuracy is not guaranteed and they do not form part of any contract. Measurements stated must be considered maximum.