

**2 Dyas Road
Sunbury-On-Thames
TW16 5DD**

£2,350 PCM

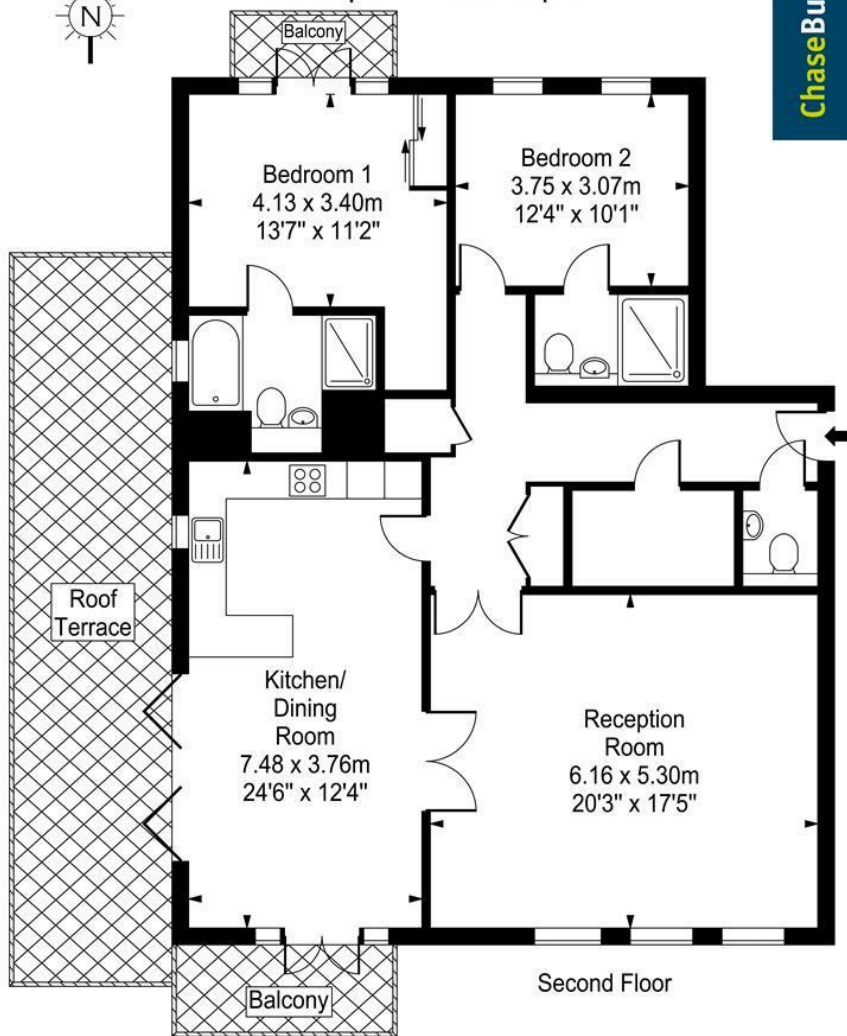
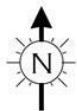
ChaseBuchanan



Hazelwood House

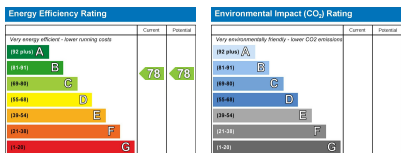
Approx. Gross Internal Area

124 Sq M - 1335 Sq Ft



ChaseBuchanan

Every attempt is made to assure accuracy, however measurements are approximate and for illustrative purposes only. Not to scale.
Floor plan by www.frameworkphotos.co.uk



Care has been taken in the preparation of these particulars, however, their accuracy is not guaranteed and they do not form part of any contract. Measurements stated must be considered maximum.

- Spacious penthouse apartment
- Two bathrooms
- Underground parking
- Council Tax - E
- Walking distance to the River Thames
- Lift access
- Roof terrace & two balconys
- EPC - C

SHORT LET - Built by award winning developers Crest Nicholson in 2016 with a luxurious interior and spacious open plan living, we have this larger than average stunning penthouse apartment, boasting 1356 sqft of luxury living space, a large roof terrace, two private balcony's and underground carpark with an allocated parking space.

Located in an enviable position in the heart of Lower Sunbury with the River Thames only a short walk from the development and Sunbury Railway Station being only 0.5 miles, Hazelwood House offers the best for a excellent work/life balance. With direct access to key transport hubs in London including Wimbledon, Clapham Junction and Waterloo, which can be reached within 31-minutes, 39-minutes and 49-minutes respectively. Hazelwood is perfectly positioned for those travelling into London on a daily basis and is also ideal for those looking to travel internationally, with Heathrow Airport less than 15-minutes by car.

Chase Buchanan are bonded members of ARLA Propertymark.

For more information or to book a viewing, please contact:

020 8941 7576

ChaseBuchanan

101 High Street, Hampton Hill, TW12 1NJ