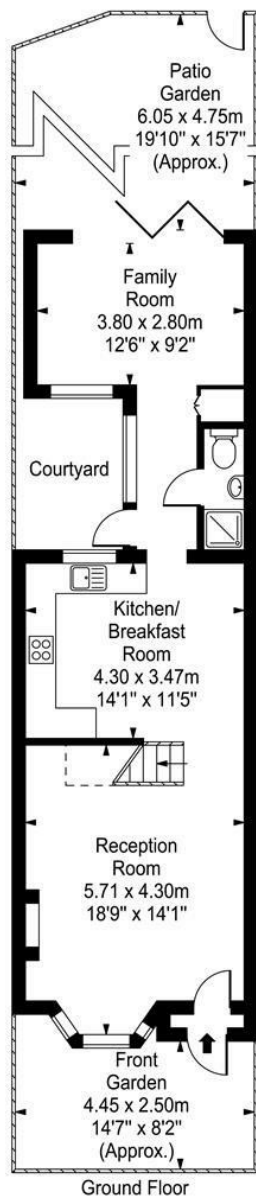


Holly Road  
Hampton Hill  
TW12 1QF

£700,000

ChaseBuchanan

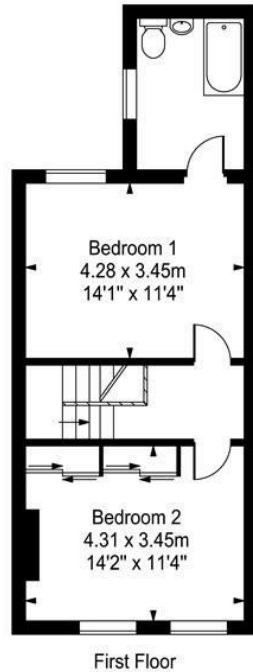




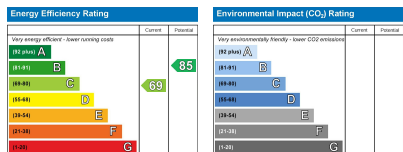
# Holly Road

Approx. Gross Internal Area  
102 Sq M - 1098 Sq Ft

**ChaseBuchanan**



Every attempt is made to assure accuracy, however measurements are approximate and for illustrative purposes only. Not to scale.  
Floor plan by [www.frameworkphotos.co.uk](http://www.frameworkphotos.co.uk)



- Viewings accompanied by Chase Buchanan
- Two large double bedrooms
- Fantastic location near to Bushy Park & Hampton Hill High St
- Sun trap courtyard
- Charming period home
- En-suite master
- Transport links to Kingston, Teddington & Twickenham
- South West Facing Garden

Chase Buchanan are delighted to bring to market this beautiful two bedroom period home just off of Hampton Hill High Street and a short walk to Bushy Park.

Upon entry you're greeted with a large double through lounge with its bay window giving you a cosy lounge space to the front and open plan kitchen dining area to the rear. Beyond the diner to the rear, a South West facing rear living space has been created overlooking the rear garden which is framed by bi-folding doors to give a great inside/outside feel on those warm summers days and ideal for entertaining.

The ground floor also benefits from a shower room, rear access to the garden and a private sun trap courtyard.

Upstairs is home to a large double bedroom to the front of the house with fitted wardrobes and to the rear a en-suite master bedroom.

Hampton Hill has many boutique shops, restaurants, and the amenities of Teddington and Hampton Hill, including the David Lloyd leisure centre, Hampton open-air pool, and Hampton Court Palace. Locally there are excellent transport links, with Fulwell & Hampton train stations offering direct access to London Waterloo and regular buses into Kingston and Richmond town centres.

For more information or to book a viewing, please contact:

020 8941 7576

**ChaseBuchanan**

101 High Street, Hampton Hill, TW12 1NJ