

**Mount Mews
Hampton
TW12 2SH**

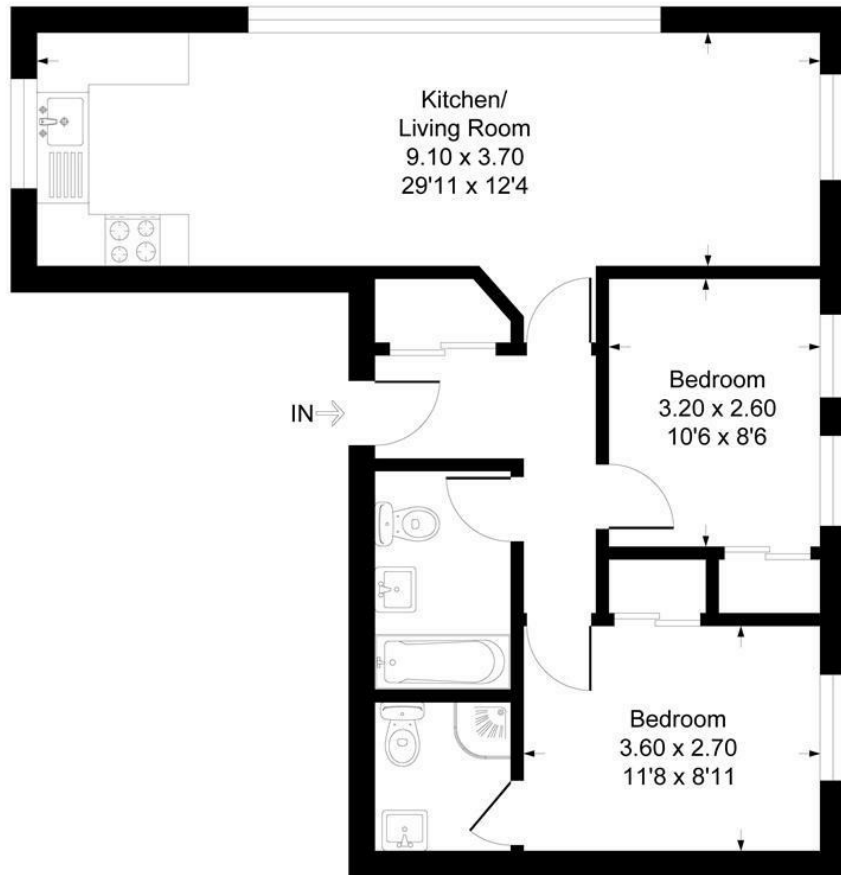
£2,050

ChaseBuchanan



Mount Mews TW12

Approximate Gross Internal Floor Area = 61.4 sq m / 661 sq ft



- Modern gated development
- Two bathrooms
- Ideally situated for Hampton Train Station
- Two double bedrooms
- Close to Bushy Park
- Two allocated parking spaces

This ground floor apartment offers a perfect blend of style and functionality, featuring two bedrooms, two bathrooms, and a host of desirable amenities.

As you step inside, you'll be greeted by the sleek elegance of wooden flooring that flows seamlessly throughout the space, creating a warm and inviting ambiance. The open-plan layout maximizes space and natural light, with the living area providing a versatile space for relaxation and entertaining. The modern kitchen is equipped with high-quality appliances, ample storage, and stylish countertops, making meal preparation a pleasure.

The apartment boasts two well-appointed bedrooms, each offering comfort and privacy for a peaceful nights rest. The master bedroom features an en-suite bathroom, while the second bedroom is serviced by a separate family bathroom, providing convenience for residents and guests alike.

Outside, the gated development provides added security and peace of mind, while two allocated off-street parking spaces ensure hassle-free parking. This apartment offers easy access to local amenities such as Bushy Park, and transportation links, allowing you to enjoy all that this vibrant community has to offer.

Chase Buchanan are bonded members of ARLA Propertymark.

For more information or to book a viewing, please contact:

020 8941 7576

ChaseBuchanan

101 High Street, Hampton Hill, TW12 1NJ

Illustration for identification purposes only, measurements are approximate, not to scale.

Energy Efficiency Rating		Environmental Impact (CO ₂) Rating	
Current	Desired	Current	Desired
Very energy efficient - lower running costs		Very environmentally friendly - lower CO ₂ emissions	
A		A	
B		B	
C		C	
D		D	
E		E	
F		F	
G		G	
75	80		

Care has been taken in the preparation of these particulars, however, their accuracy is not guaranteed and they do not form part of any contract. Measurements stated must be considered maximum.