

Hampton Road
Hampton
TW12 1JQ

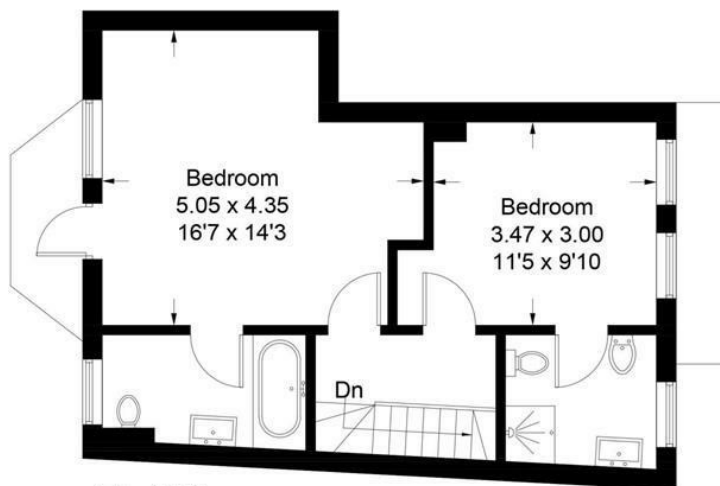
£3,900

ChaseBuchanan

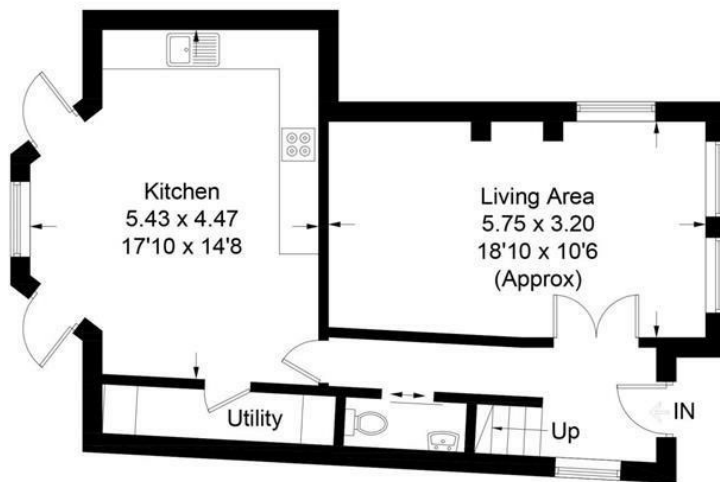


Featherbed Villas, Hampton Hill

Approx . Gross Internal Area = 100 sq mt / 1076 sq ft



First Floor



Ground Floor

Every attempt is made to assure accuracy, however measurements are approximate and for illustrative purposes only. Not to scale. (359277)

Energy Efficiency Rating		Current	Desired	Environmental Impact (CO ₂) Rating	
Very energy efficient - lower running costs				Very environmentally friendly - lower CO ₂ emissions	
A	92-100			A	10-15%
B	81-91			B	16-20%
C	69-80			C	21-25%
D	55-68			D	26-30%
E	39-54			E	31-35%
F	21-38			F	36-40%
G	1-20			G	41-45%

- Private gated development
- Two en-suite bathrooms
- Underfloor heating downstairs
- South-facing garden
- Walking distance to Fulwell station
- Two double bedrooms
- Ground floor WC & separate utility
- Solar panels
- Two allocated parking spaces
- On Bushy Parks doorstep

A luxurious retreat nestled within a prestigious gated development. This exquisite detached house offers a rare combination of elegance, comfort, and convenience, making it the perfect place to call home.

Upon entering, you'll be greeted by the grandeur of high ceilings and the warmth of underfloor heating, creating an inviting atmosphere throughout. The property features two generously sized bedrooms, each accompanied by its own modern bathroom, ensuring privacy and comfort for residents and guests alike. The well-appointed kitchen boasts sleek countertops, premium appliances, and ample storage space, making meal preparation a breeze. A downstairs WC and utility room add to the convenience of daily living.

Step outside to discover the south-facing garden, where you can bask in the sunshine and enjoy outdoor gatherings with family and friends. With solar panels enhancing energy efficiency, you can embrace sustainable living while reducing utility costs.

Featherbed Villas also offers the convenience of two allocated off-street parking spaces, ensuring hassle-free arrivals and departures. Plus, its close proximity to Fulwell station and Bushy Park provides easy access to transportation and allows you to explore the beauty of the surrounding area with ease. With its impressive features and desirable location, Featherbed Villas presents a rare opportunity to experience luxurious living in Hampton Hill.

For more information or to book a viewing, please contact:

020 8941 7576

ChaseBuchanan

101 High Street, Hampton Hill, TW12 1NJ

Care has been taken in the preparation of these particulars, however, their accuracy is not guaranteed and they do not form part of any contract. Measurements stated must be considered maximum.