

**Conway Road
Hanworth
TW13 6TE**

£555,000

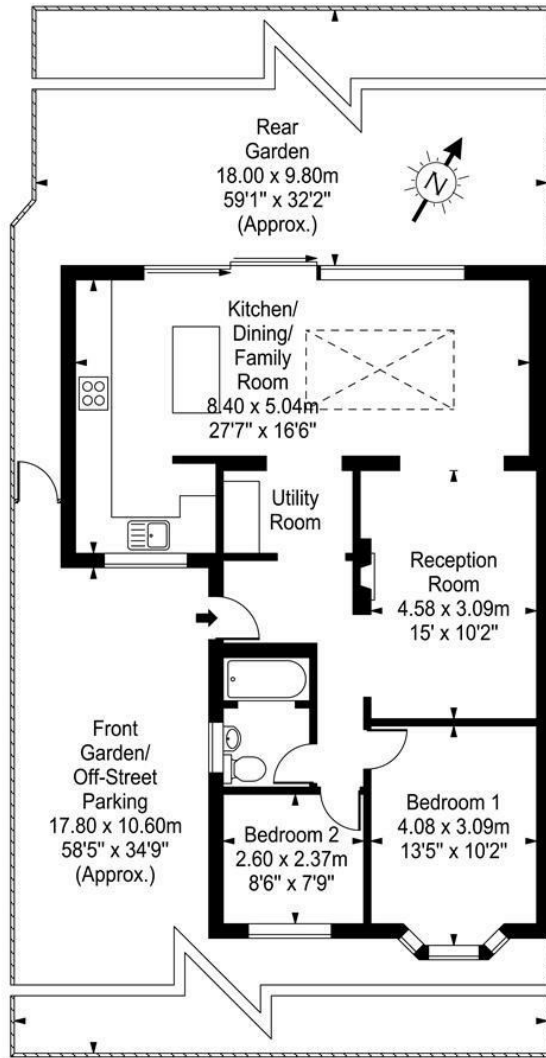
ChaseBuchanan



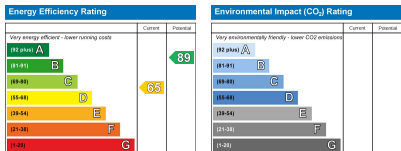
Conway Road

Approx. Gross Internal Area
86 Sq M - 925 Sq Ft

ChaseBuchanan



Every attempt is made to assure accuracy, however measurements are approximate and for illustrative purposes only. Not to scale.
Floor plan by www.frameworkphotos.co.uk



- Viewings accompanied by Chase Buchanan
- Two double bedrooms
- No onward chain
- Semi detached bungalow
- South facing garden
- Potential to extend (STTP)

A wonderful and rarely available semi-detached bungalow on a quiet road in Hanworth.

The bungalow has been extended and refurbished to a very high standard offering open plan living with an impressive L shape kitchen/dining room with an island, under floor heating, lantern skylight and large sliding doors with electric blinds opening onto the beautiful garden, a utility area, Two double bedrooms and a family bathroom.

Externally the beautifully landscaped South Westerly facing garden, where you can unwind, host BBQs, or enjoy your morning coffee. It's the perfect place to soak up the sun and enjoy the pergola with your private haven. The front of the property has a private driveway for 2/3 cars and a side access.

The property is offered to the market chain free and also has the potential to extend into the loft STTP!

Conway Road is a desirable road in the heart of Hanworth, you'll be just minutes away from schools, parks, shopping centres, and commuter routes, making daily life convenient and enjoyable.

For more information or to book a viewing, please contact:

020 8941 7576

ChaseBuchanan

101 High Street, Hampton Hill, TW12 1NJ

Care has been taken in the preparation of these particulars, however, their accuracy is not guaranteed and they do not form part of any contract. Measurements stated must be considered maximum.