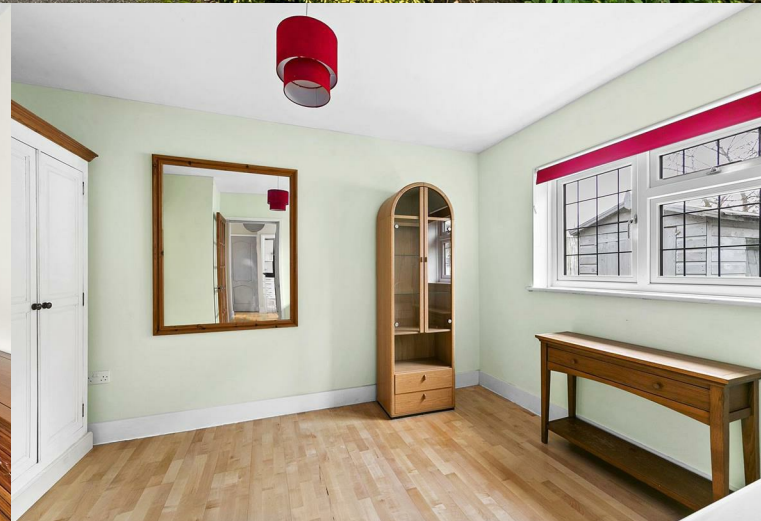


**Angel Close Windmill  
Road  
Hampton Hill  
TW12 1RG**

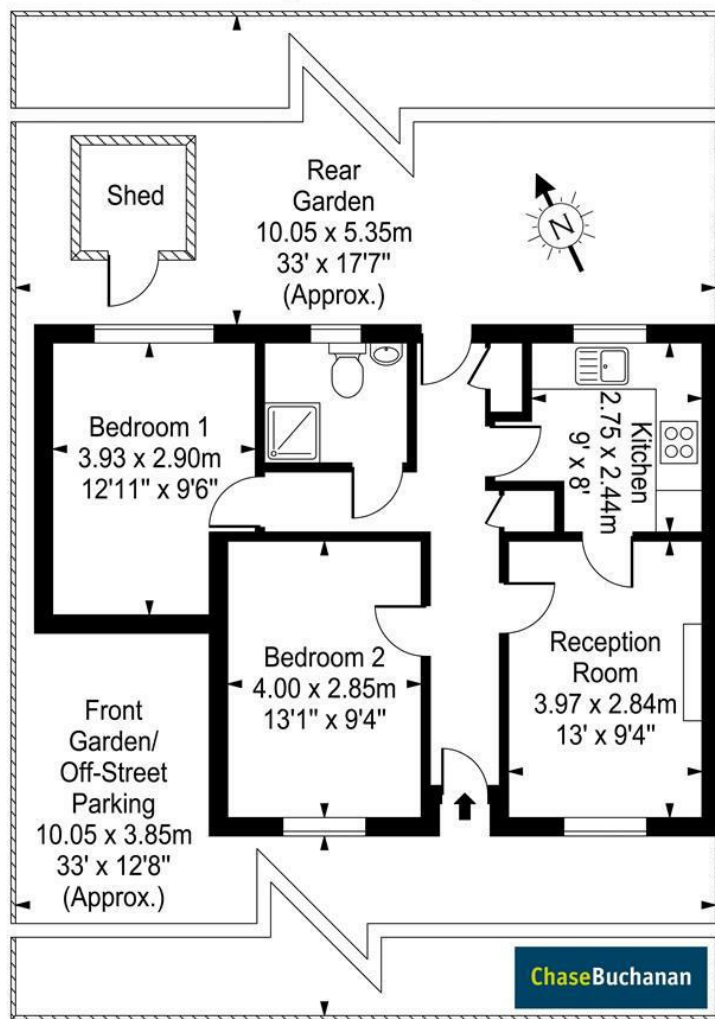
£625,000

**ChaseBuchanan**

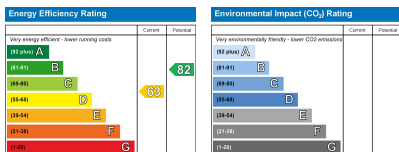


# Angel Close

Approx. Gross Internal Area  
57 Sq M - 614 Sq Ft



Every attempt is made to assure accuracy, however measurements are approximate and for illustrative purposes only. Not to scale.  
Floor plan by [www.frameworkphotos.co.uk](http://www.frameworkphotos.co.uk)



- Viewings accompanied by Chase Buchanan
- Private drive way
- Chain free
- Detached bungalow
- Front and rear garden
- Stone throw from Bushy park

Chase Buchanan are delighted to bring to market this unique and rarely available, detached bungalow in the heart of Hampton Hill.

This bungalow is modern throughout and offers a bright living room, wooden floors with underfloor heating throughout, two double bedrooms, a shower room and separate kitchen.

Externally there is a rear patio garden which is perfect alfresco dining and a pretty front garden with a private driveway.

High Street, Hampton Hill has many boutique shops, restaurants, and the Royal Bushy Park. Hampton open-air pool, and Hampton Court Palace. Locally there are excellent transport links, with Fulwell train station offering direct access to London Waterloo and regular buses into Kingston and Richmond town centres.

For more information or to book a viewing, please contact:

020 8941 7576

**ChaseBuchanan**

101 High Street, Hampton Hill, TW12 1NJ