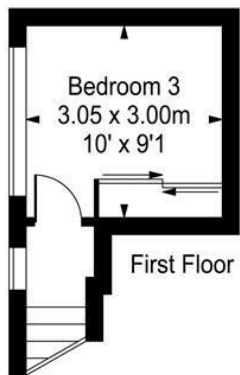


**Falstaff Mews
Hampton Hill
TW12 1LY**

£650,000

ChaseBuchanan



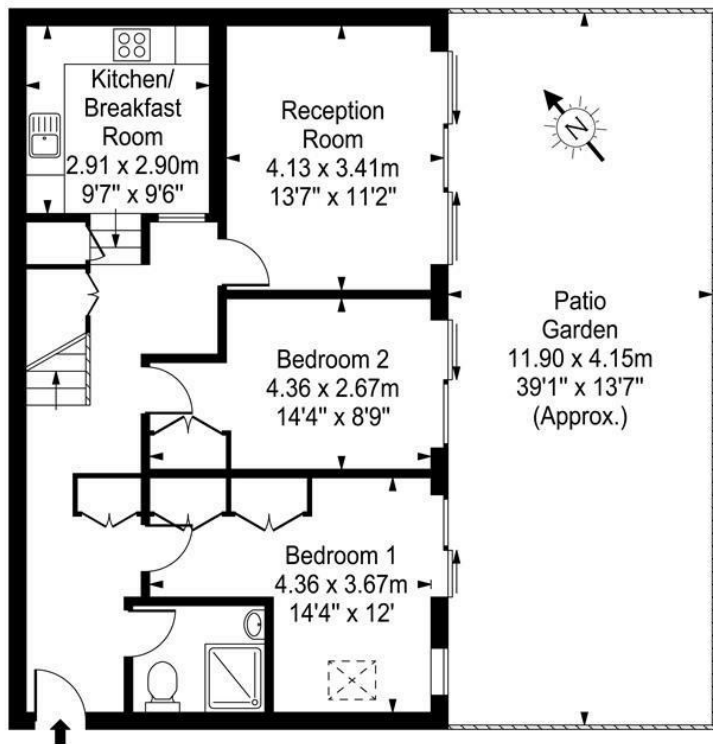


Falstaff Mews

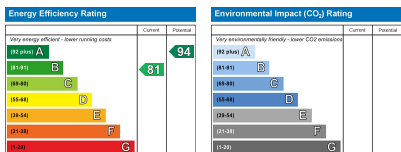
Approx. Gross Internal Area

82 Sq M - 882 Sq Ft

ChaseBuchanan



Every attempt is made to assure accuracy, however measurements are approximate and for illustrative purposes only. Not to scale.
Floor plan by www.frameworkphotos.co.uk



Care has been taken in the preparation of these particulars, however, their accuracy is not guaranteed and they do not form part of any contract. Measurements stated must be considered maximum.

- Viewings accompanied by Chase Buchanan
- Unique and detached
- Modern build
- Private garden
- Three bedroom house
- Gated Development
- Allocated parking
- Finished to exceptionally high standard

Chase Buchanan are delighted to bring to market this unique, modern home in the heart of Hampton Hill.

As you step into this property you can truly appreciate the finish and light this lovely home has to offer. There are three double bedrooms over two floors, all of which are good sizes and boast fitted wardrobes.

The living room really has the wow factor, with high ceilings and sliding doors leading onto your very own private garden. To the lower ground floor you will find an eat-in kitchen, which is spacious and finished with hi-gloss units and quartz worktops.

Located in a prime location on Hampton Hill High Street, Bushy Park and the convenience of the high street are only moments away. There is secure allocated parking, along with ample bike storage. For commuters, Fulwell station is only a short stroll away.

Further benefits include the luxury of underfloor heating, and for when the summer days become too warm there is air conditioning, as well as a video entry system and alarm system.

For more information or to book a viewing, please contact:

020 8941 7576

ChaseBuchanan

101 High Street, Hampton Hill, TW12 1NJ