

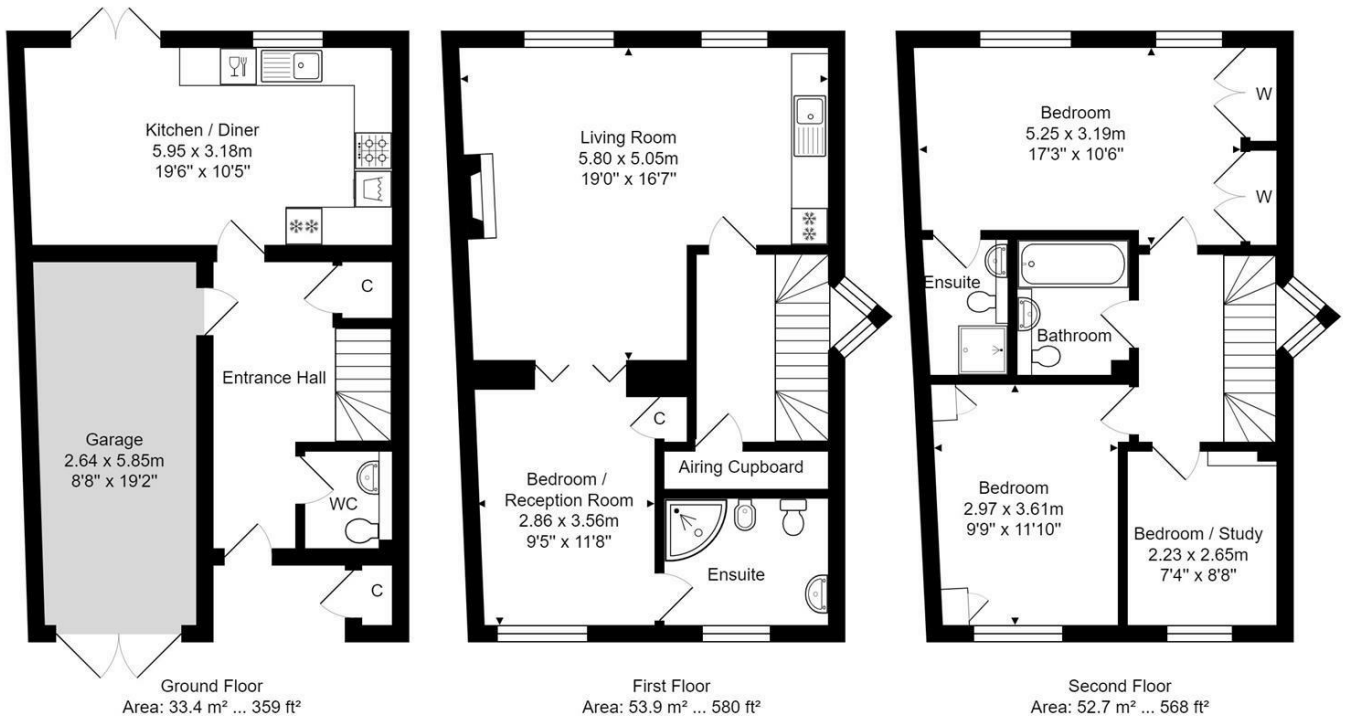


**7 Greenland Mills  
Bradford-On-Avon, BA15 1BL**

**£535,000**

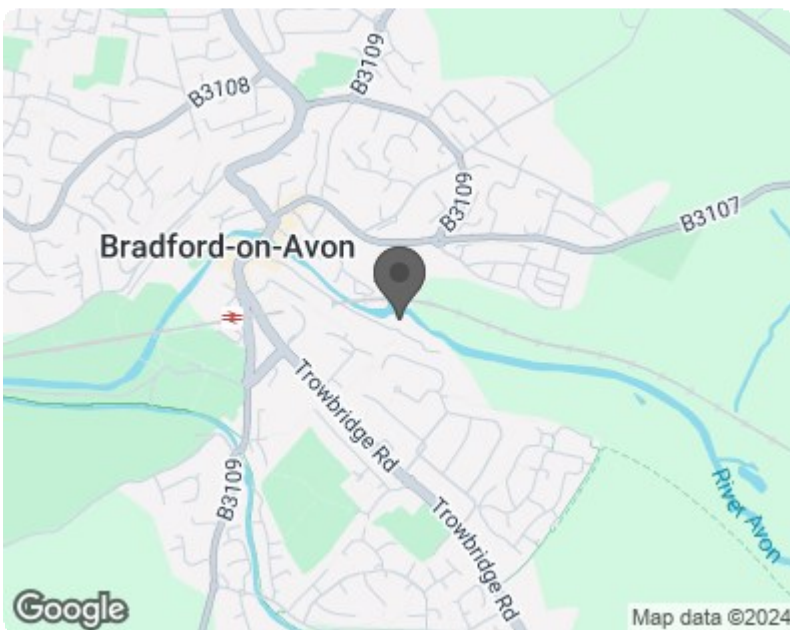
**KEENLY PRICED TO SELL!** Riverside home with views of the weir. Three or four bedrooms & three bathrooms over three floors. Sitting room & kitchen breakfast room. Garage & driveway parking.





Total Area: 140.0 m<sup>2</sup> ... 1507 ft<sup>2</sup> (excluding garage)

Whilst every attempt has been made to ensure the accuracy of the floorplan contained here, measurements of doors, windows, rooms and any other items are approximate and no responsibility is taken for any error, omission or mis-statement. This plan is purely for illustrative purposes only and should be used as such by any prospective purchaser. Area includes internal and external wall thickness  
www.epcassessments.co.uk



| Energy Efficiency Rating                    |                    | Current                 | Potential |
|---|--------------------|-------------------------|-----------|
| Very energy efficient - lower running costs | (92 plus) <b>A</b> |                         |           |
| (81-91) <b>B</b>                            |                    |                         |           |
| (69-80) <b>C</b>                            |                    |                         |           |
| (55-68) <b>D</b>                            |                    |                         |           |
| (39-54) <b>E</b>                            |                    |                         |           |
| (21-38) <b>F</b>                            |                    |                         |           |
| (1-20) <b>G</b>                             |                    |                         |           |
| Not energy efficient - higher running costs |                    |                         |           |
| <b>England &amp; Wales</b>                  |                    | EU Directive 2002/91/EC |           |

| Environmental Impact (CO <sub>2</sub> ) Rating                  |                    | Current                 | Potential |
|---|--------------------|-------------------------|-----------|
| Very environmentally friendly - lower CO <sub>2</sub> emissions | (92 plus) <b>A</b> |                         |           |
| (81-91) <b>B</b>  |                    |                         |           |
| (69-80) <b>C</b>  |                    |                         |           |
| (55-68) <b>D</b>  |                    |                         |           |
| (39-54) <b>E</b>  |                    |                         |           |
| (21-38) <b>F</b>  |                    |                         |           |
| (1-20) <b>G</b>   |                    |                         |           |
| Not environmentally friendly - higher CO <sub>2</sub> emissions |                    |                         |           |
| <b>England &amp; Wales</b>                                      |                    | EU Directive 2002/91/EC |           |