



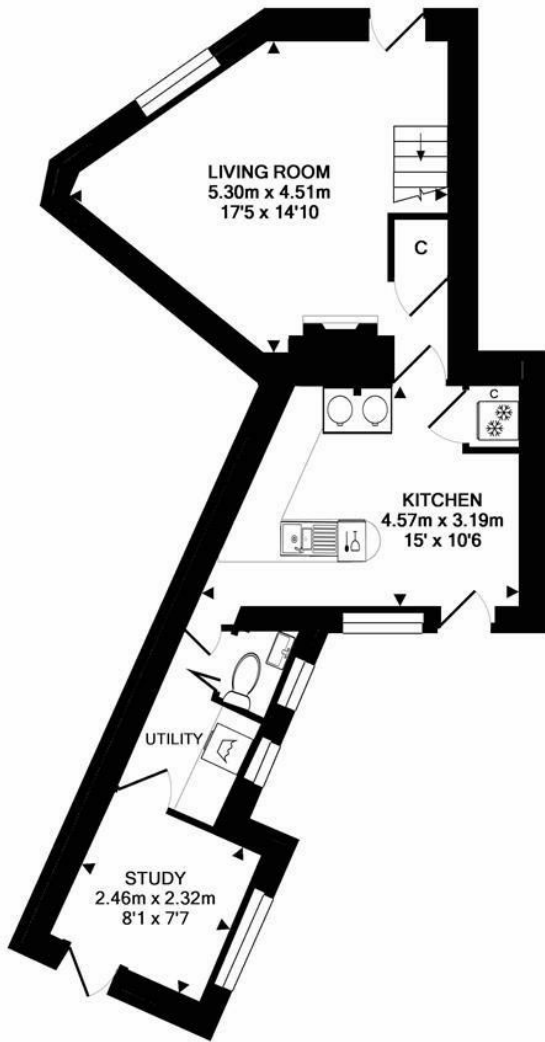
**September Cottage 143  
Bradford-On-Avon, BA15 2LB**

**Guide Price £350,000**

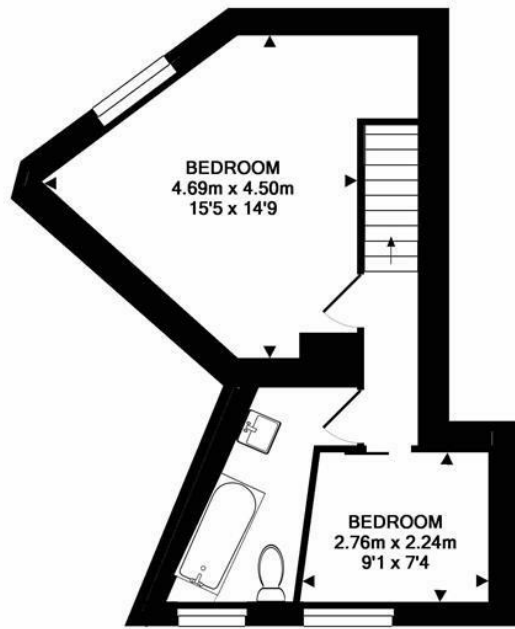
September Cottage is a very pretty 2 bedroom village home with a surprising garden in the “old part” of the sought-after village of Winsley. Available with no onward chain.







GROUND FLOOR  
APPROX. FLOOR  
AREA 43.4 SQ.M.  
(467 SQ.FT.)



1ST FLOOR  
APPROX. FLOOR  
AREA 31.0 SQ.M.  
(334 SQ.FT.)

TOTAL APPROX. FLOOR AREA 74.5 SQ.M. (802 SQ.FT.)

Whilst every attempt has been made to ensure the accuracy of the floor plan contained here, measurements of doors, windows, rooms and any other items are approximate and no responsibility is taken for any error, omission, or mis-statement. This plan is for illustrative purposes only and should be used as such by any prospective purchaser. The services, systems and appliances shown have not been tested and no guarantee as to their operability or efficiency can be given  
Made with Metropix ©2018



Energy Efficiency Rating		Current	Potential
Very energy efficient - lower running costs	(92 plus) <b>A</b>		
(81-91) <b>B</b>			
(69-80) <b>C</b>			
(55-68) <b>D</b>			
(39-54) <b>E</b>			
(21-38) <b>F</b>			
(1-20) <b>G</b>			
Not energy efficient - higher running costs			
<b>England &amp; Wales</b>		EU Directive 2002/91/EC	

Environmental Impact (CO <sub>2</sub> ) Rating		Current	Potential
Very environmentally friendly - lower CO <sub>2</sub> emissions	(92 plus) <b>A</b>		
(81-91) <b>B</b>			
(69-80) <b>C</b>			
(55-68) <b>D</b>			
(39-54) <b>E</b>			
(21-38) <b>F</b>			
(1-20) <b>G</b>			
Not environmentally friendly - higher CO <sub>2</sub> emissions			
<b>England &amp; Wales</b>		EU Directive 2002/91/EC	