

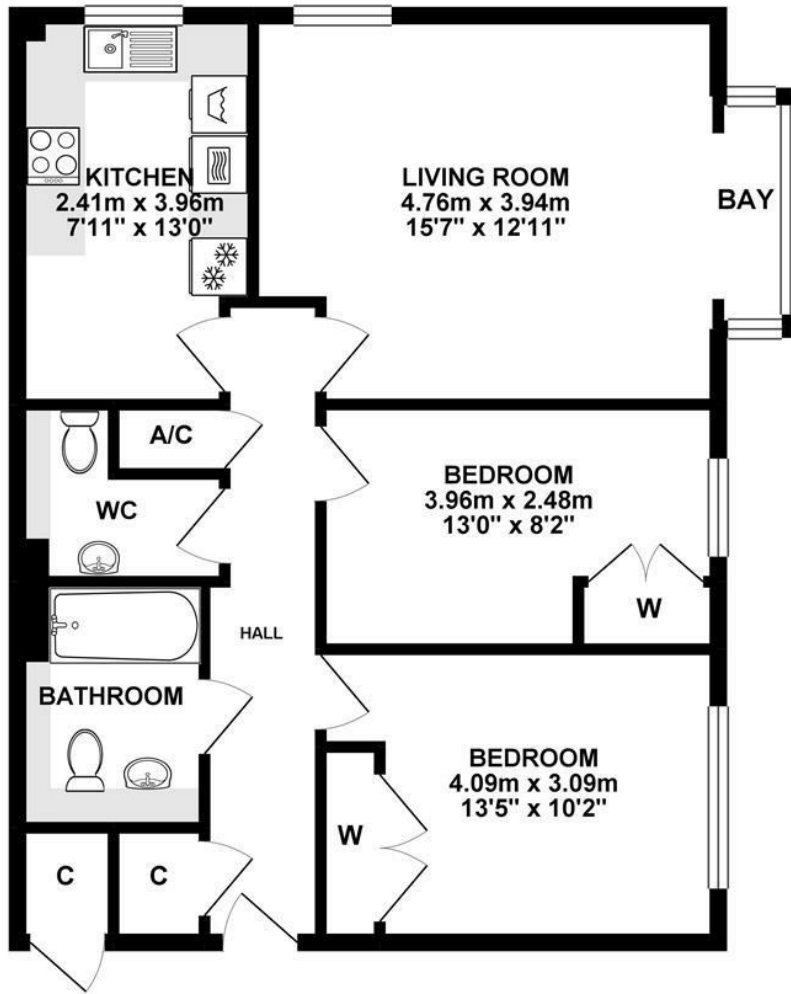


**23 Fitzmaurice Place
Bradford-On-Avon, Wiltshire BA15 1EL**

Guide Price £160,000

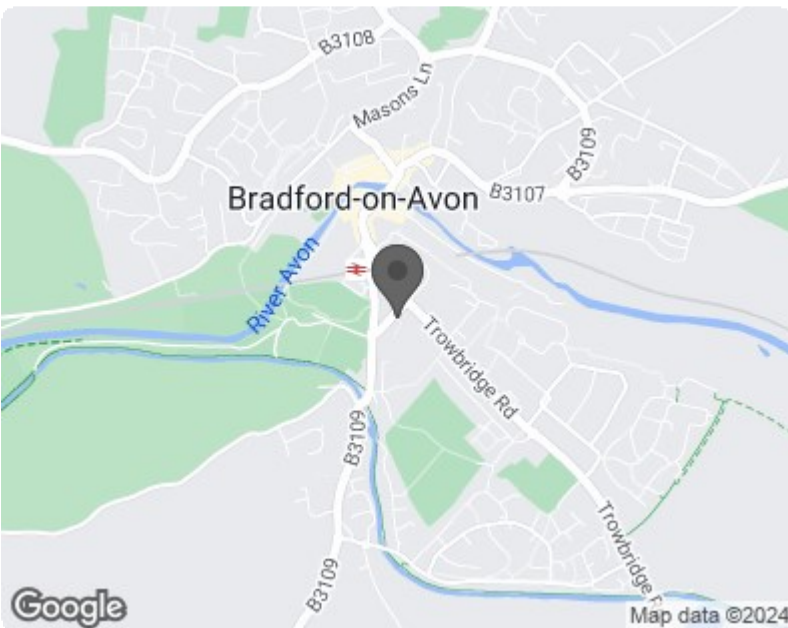
A LIGHT & AIRY, TOP FLOOR RETIREMENT APARTMENT WITH A LIFT, TWO BEDROOMS, BATHROOM PLUS CLOAKROOM AND VIEWS.

FLOOR AREA 69.42 sq. m.
(747.19 sq. ft.)



TOTAL FLOOR AREA : 69.42 sq. m. (747.19 sq. ft.) approx.

Whilst every attempt has been made to ensure the accuracy of the floorplan contained here, measurements of doors, windows, rooms and any other items are approximate and no responsibility is taken for any error, omission or mis-statement. This plan is for illustrative purposes only and should be used as such by any prospective purchaser. The services, systems and appliances shown have not been tested and no guarantee as to their operability or efficiency can be given.
Made with Maltipix ©2019



Energy Efficiency Rating		Current	Potential
Very energy efficient - lower running costs			
(92 plus) A			
(81-91) B			
(69-80) C		69	77
(55-68) D			
(39-54) E			
(21-38) F			
(1-20) G			
Not energy efficient - higher running costs			
England & Wales		EU Directive 2002/91/EC	

Environmental Impact (CO ₂) Rating		Current	Potential
Very environmentally friendly - lower CO ₂ emissions			
(92 plus) A			
(81-91) B			
(69-80) C			
(55-68) D			
(39-54) E			
(21-38) F			
(1-20) G			
Not environmentally friendly - higher CO ₂ emissions			
England & Wales		EU Directive 2002/91/EC	