



27 Corbie Way | Pickering, YO18 7JS

An attractive detached bungalow situated on this established development. The accommodation comprises: Entrance Porch, light and airy sitting room, kitchen, Inner hallway, conservatory, three bedrooms and bathroom with separate shower cubicle. Externally there is a garden to the

front, driveway with access to garden area with paved patio and lawn.

Corbie Way is situated to the North East of Pickering town centre and is within walking distance of the market town facilities and recreational amenities which are available.



Guide Price £265,000

27 Corbie Way | Pickering



Accommodation comprises

Entrance door

Leads to.

Enclosed Entrance Porch

Central heating radiator, door to.

Living Room/Dining Area

Fireplace with wooden surround, marble effect back and hearth, electric fire, coving to ceiling, two central heating radiators, double glazed bay window to the front elevation, and double glazed window to the side elevation.

Kitchen

Comprising 1 1/2 bowl drainer sink unit set within rolled edge work surfaces, further wall and

base units incorporating drawer compartments with tiled splash backs, space for cooker, plumbing for automatic washing machine, space for undercounter fridge, central heating radiator, double glazed window to the side and rear elevation, door to outside. Wall mounted Worcester gas fired central heating boiler.

Inner Hallway

Built in cupboard. Access to roof space.

Master Bedroom

With double glazed window to the front elevation, fitted wardrobes, bedside cabinets and drawer compartments, central heating radiator.



Bedroom Two

Double glazed window to the rear elevation overlooking the garden, central heating radiator.

Bedroom Three/Study

With doors to conservatory.

Bathroom

Comprising shower cubicle with shower unit, panelled bath with mixer tap, vanity unit with inset wash hand basin, mixer tap and cupboards below. Low flush w.c., wall tiling, chrome heated towel rail and wall mounted verticle radiator.

Conservatory

With double glazed sliding doors, central heating radiator.

Outside

The front garden is mainly laid to lawn with hedgerow, dwarf fencing and shrubs. Gravelled area from the driveway leads to the rear with a paved and pebble area, garden shed, greenhouse, outside tap, laid lawn with mature flower/shrubbery borders with fencing to the boundaries.

Services

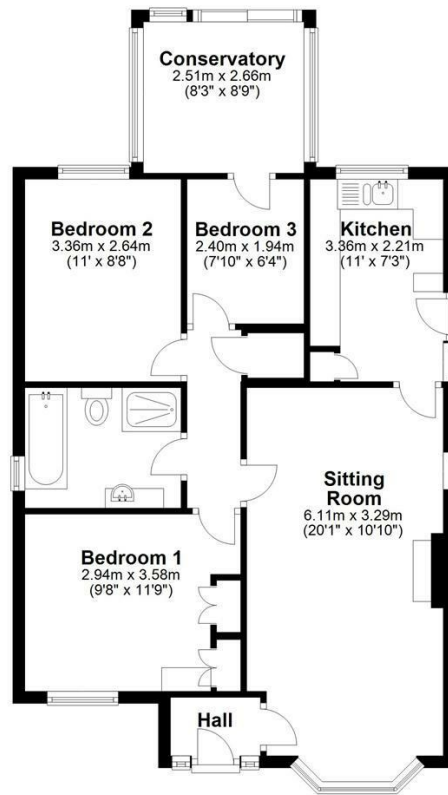
Mains electricity, gas, water and drainage are connected.



27 Corbie Way | Pickering

Ground Floor

Approx. 71.1 sq. metres (765.8 sq. feet)



Total area: approx. 71.1 sq. metres (765.8 sq. feet)
27 Corbie Way, Pickering

VIEWING

Strictly by appointment with the agents

COUNCIL TAX BAND

D

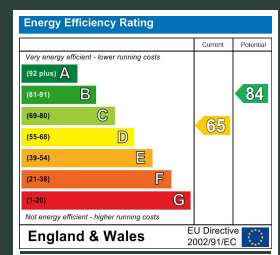
ENERGY PERFORMANCE RATING

D

St Georges House 39 Market Place, Pickering, YO18 7AE

t: 01751 472724

e: pickering@boultoncooper.co.uk



boultoncooper.co.uk



CONSUMER PROTECTION FROM UNFAIR TRADING REGULATIONS 2008

The description contained in this brochure is intended only to give a general impression of the property, its location and features, in order to help you to decide whether you wish to look at it. We do our very best to provide accurate information but we are human, so you should not allow any decisions to be influenced by it. For example any measurements are approximate and, where such things as central heating, plumbing, wiring or mains services are mentioned, we would advise you to take your own steps to check their existence and condition. Although we cannot accept any responsibility for any inferences drawn from this brochure or any inaccuracy in it, we shall always try to help you with any queries.

BoultonCooper for themselves and for the vendors or lessors of the property/properties, whose agents they are, give notice that (i) the particulars are produced in good faith, are set out as a general guide only and do not constitute any part of the contract; (ii) no person in the employment of BoultonCooper has any authority to make or give representation or warranty whatever in relation to this/these property/properties.

BC
Est. 1801