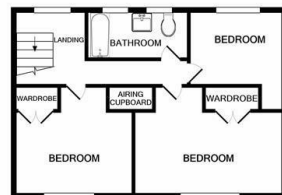
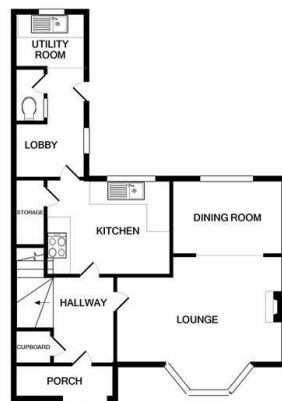




Norwich Road, Ipswich, IP1 6JY

£1,195 PCM

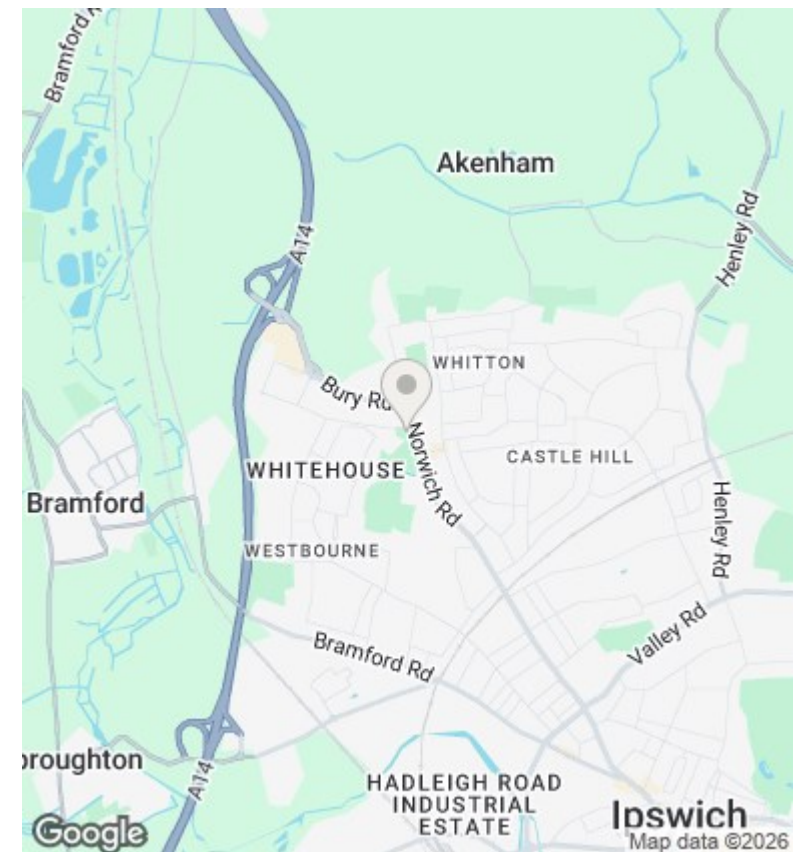
- Semi-Detached House - NOT AVAILABLE UNTIL AFTER 16/03/2026>>>
- Dining Room
- Cloakroom
- EPC rating - C
- Three Bedrooms
- Kitchen
- Garden
- Lounge
- Utility Room
- Popular Location



TOTAL APPROX. FLOOR AREA 883 SQ.FT. (82.1 SQ.M.)

Whilst every attempt has been made to ensure the accuracy of the floor plan contained here, measurements of doors, windows, rooms and any other items are approximate and no responsibility is taken for any error, omission, or mis-statement. This plan is for illustrative purposes only and should be used as such by any prospective purchaser. The services, systems and appliances shown have not been tested and no guarantee as to their operability or efficiency can be given.

Made with Metropix G2021



Directions

Viewings

Viewings by arrangement only. Call 01473 221 399 to make an appointment.

EPC Rating:

C

Energy Efficiency Rating		
	Current	Potential
Very energy efficient - lower running costs		
(92 plus) A		
(81-91) B		82
(69-80) C	69	
(55-68) D		
(39-54) E		
(21-38) F		
(1-20) G		
Not energy efficient - higher running costs		
England & Wales		EU Directive 2002/91/EC