

KEYSTONE

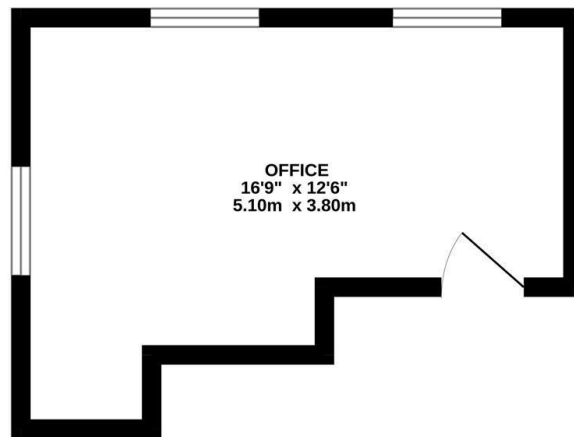


Woodbridge Road, Ipswich, IP4 4PG

£295 PCM

- Unfurnished corner office
- Available now
- North East Ipswich (top of Woodbridge Road) • Allocated space and visitor parking

GROUND FLOOR
164 sq.ft. (15.3 sq.m.) approx.



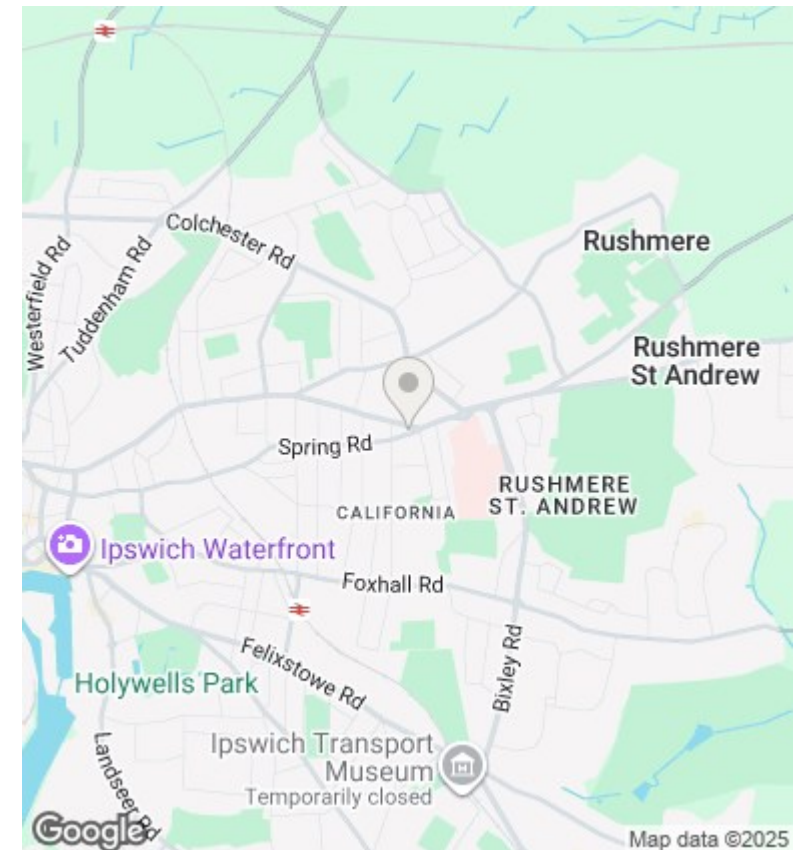
TOTAL FLOOR AREA : 164 sq.ft. (15.3 sq.m.) approx.
Whilst every attempt has been made to ensure the accuracy of the floorplan contained herein, measurements of doors, windows, rooms and any other items are approximate and no responsibility is taken for any error, omission or misstatement. This plan is for guidance purposes only and should be used as such for any prospective purchaser. The services, systems and appliances shown have not been tested and no guarantee as to their operability or efficiency can be given.
Made with Metropix G2025

Directions

Viewings

Viewings by arrangement only. Call 01473 221 399 to make an appointment.

EPC Rating:



Energy Efficiency Rating		
	Current	Potential
Very energy efficient - lower running costs		
(92 plus) A		
(81-91) B		
(69-80) C		
(55-68) D		
(39-54) E		
(21-38) F		
(1-20) G		
Not energy efficient - higher running costs		
England & Wales	EU Directive 2002/91/EC	