

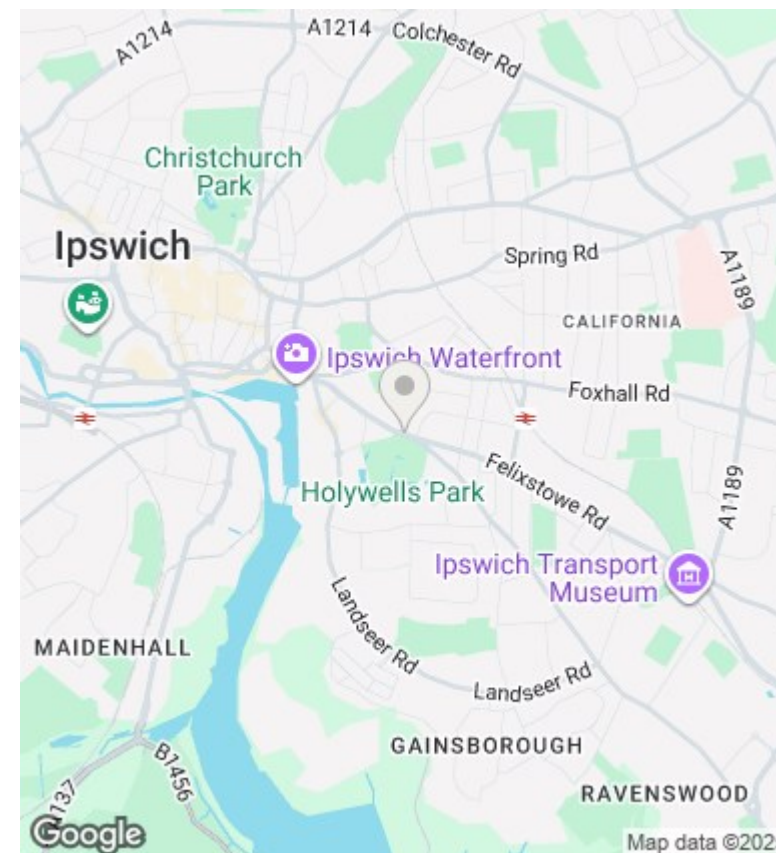
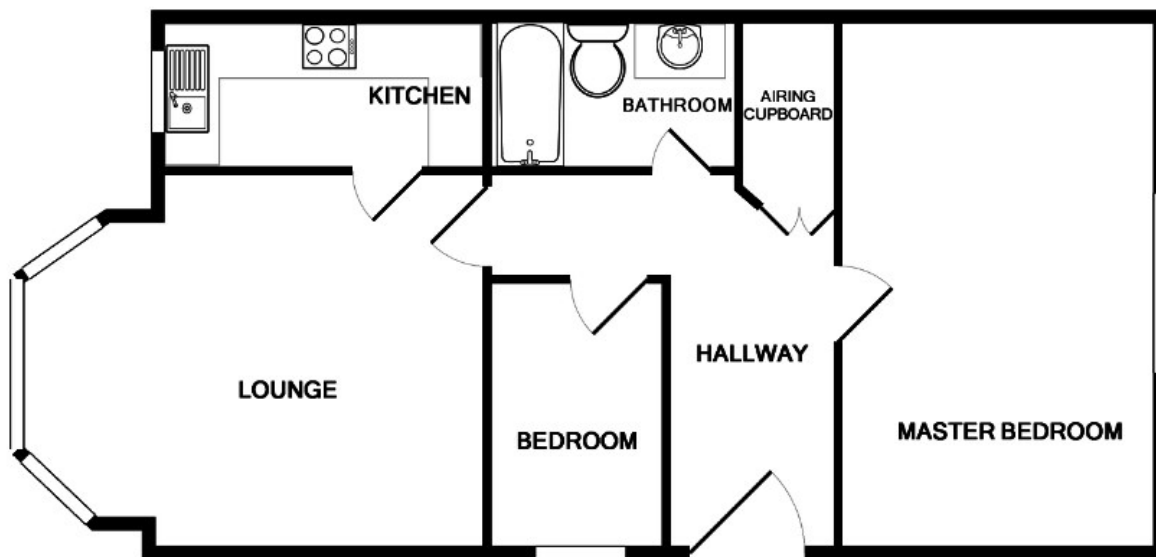
# KEYSTONE



Rose Hill Crescent, Ipswich, IP3 8ER

£950 PCM

- Unfurnished two bedroom Maisonette
- Lounge
- Communal garden
- East Ipswich
- Bathroom with a shower
- EPC Rating D
- Entrance hall
- Off road parking
- Available 26/09/25



## Directions

## Viewings

Viewings by arrangement only. Call 01473 221 399 to make an appointment.

## EPC Rating:

D

Energy Efficiency Rating		
	Current	Potential
Very energy efficient - lower running costs		
(92 plus) <b>A</b>		
(81-91) <b>B</b>		
(69-80) <b>C</b>		
(55-68) <b>D</b>	59	65
(39-54) <b>E</b>		
(21-38) <b>F</b>		
(1-20) <b>G</b>		
Not energy efficient - higher running costs		
England & Wales		EU Directive 2002/91/EC