

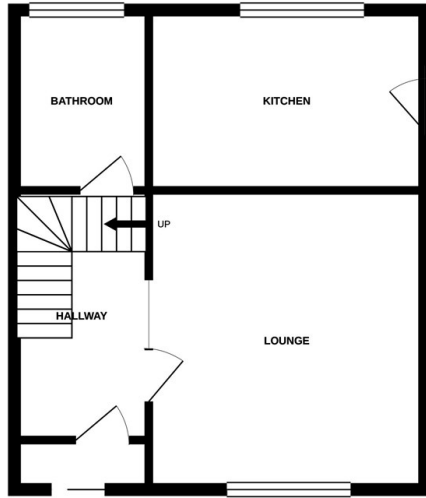


Hawthorn Drive, Ipswich, IP2 0PG

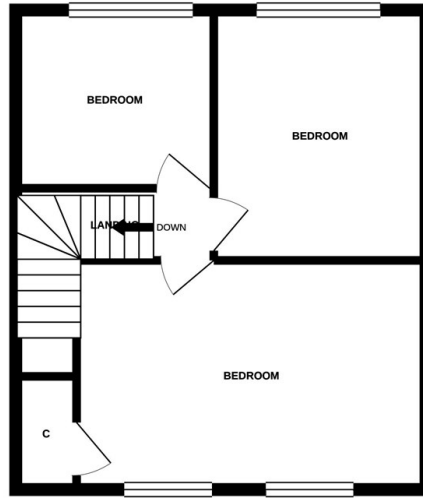
£1,295 PCM

- Part Furnished Three Bedroom House
- Kitchen
- Double Glazed
- Situated In South West Ipswich
- Ground Floor Wet Room
- Off Road Parking
- Lounge
- Gas Central Heating
- EPC Rating D

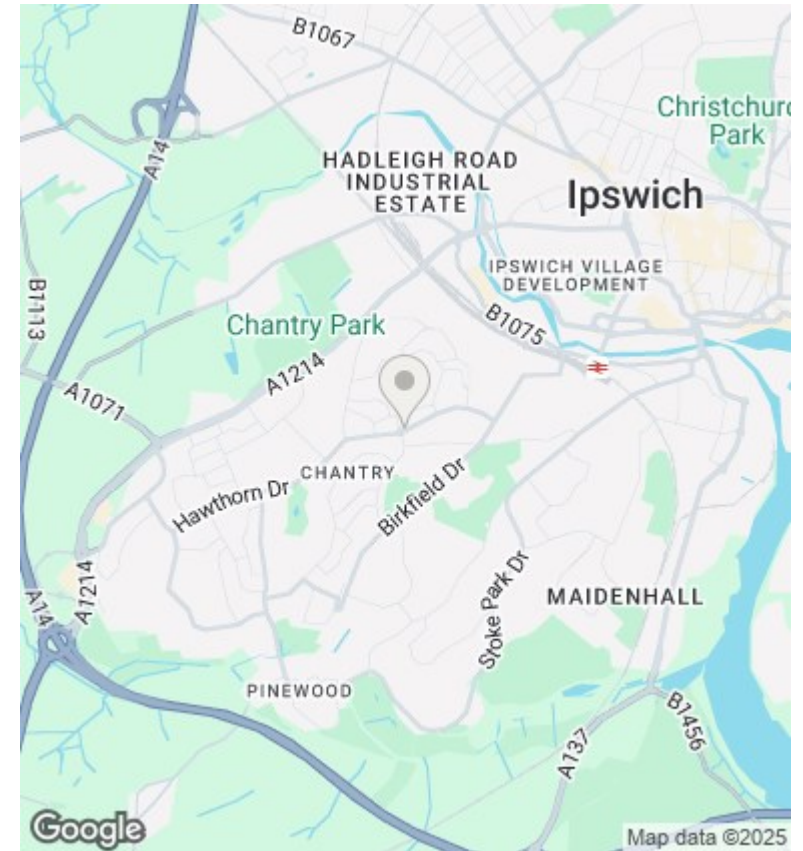
GROUND FLOOR



1ST FLOOR



Whilst every attempt has been made to ensure the accuracy of the floorplan contained here, measurements of doors, windows, rooms and any other items are approximate and no responsibility is taken for any error, omission or mis-statement. This plan is for illustrative purposes only and should be used as such by any prospective purchaser. The services, systems and appliances shown have not been tested and no guarantee as to their operability or efficiency can be given.
Made with Metropix 6/2021



Directions

Viewings

Viewings by arrangement only. Call 01473 221 399 to make an appointment.

EPC Rating:

D

Energy Efficiency Rating		
	Current	Potential
Very energy efficient - lower running costs		
(92 plus) A		
(81-91) B		80
(69-80) C		
(55-68) D	63	
(39-54) E		
(21-38) F		
(1-20) G		
Not energy efficient - higher running costs		
England & Wales	EU Directive 2002/91/EC	