

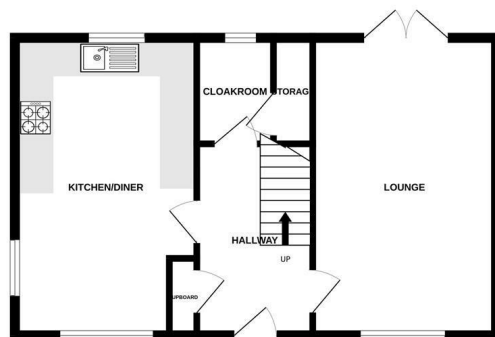


St. Michaels Road, Mistley, Manningtree, CO11 2GR

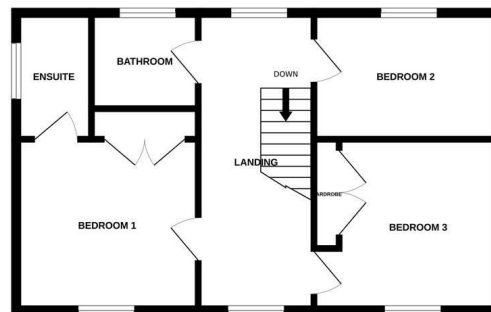
£1,695

- Part-Furnished three bedroom Detached House
- Kitchen diner inc fitted appliance
- Gas central heating & Double Glazed
- Situated in Mistley
- Family bathroom, ensuite & cloakroom.
- EPC Rating B
- Featuring large Gallery Style entrance hall & Landing
- Driveway for two cars.
- Available Aug 2025

GROUND FLOOR
495 sq.ft. (46.0 sq.m.) approx.



1ST FLOOR
495 sq.ft. (46.0 sq.m.) approx.



TOTAL FLOOR AREA: 991 sq.ft. (92.0 sq.m.) approx.

Whilst every attempt has been made to ensure the accuracy of the floorplan contained here, measurements of doors, windows, rooms and any other items are approximate and no responsibility is taken for any error, omission or mis-statement. This plan is for illustrative purposes only and should be used as such by any prospective purchaser. The services, systems and appliances shown have not been tested and no guarantee as to their operability or efficiency can be given.
Made with Metropix ©2023



Directions

Viewings

Viewings by arrangement only. Call 01473 221 399 to make an appointment.

EPC Rating:

B

Energy Efficiency Rating		
	Current	Potential
Very energy efficient - lower running costs		
(92 plus) A		94
(81-91) B	83	
(69-80) C		
(55-68) D		
(39-54) E		
(21-38) F		
(1-20) G		
Not energy efficient - higher running costs		
England & Wales	EU Directive 2002/91/EC	