

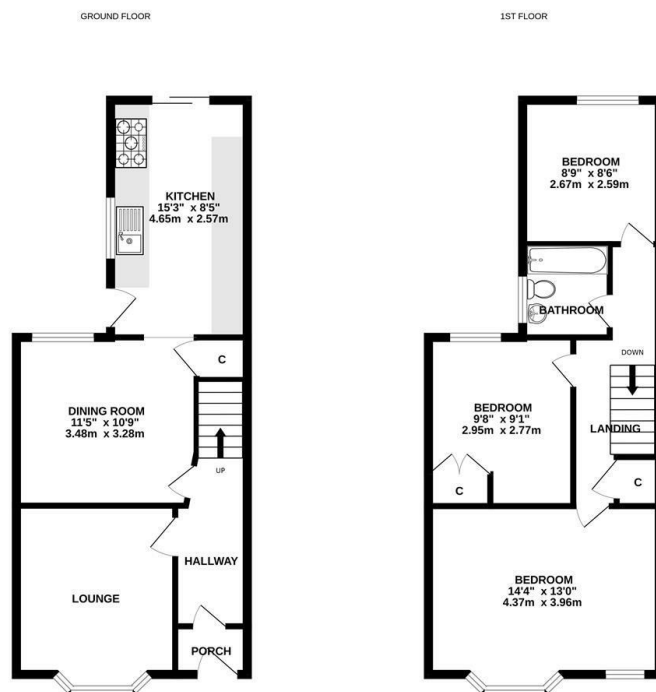


Sherrington Road, Ipswich, IP1 4HU

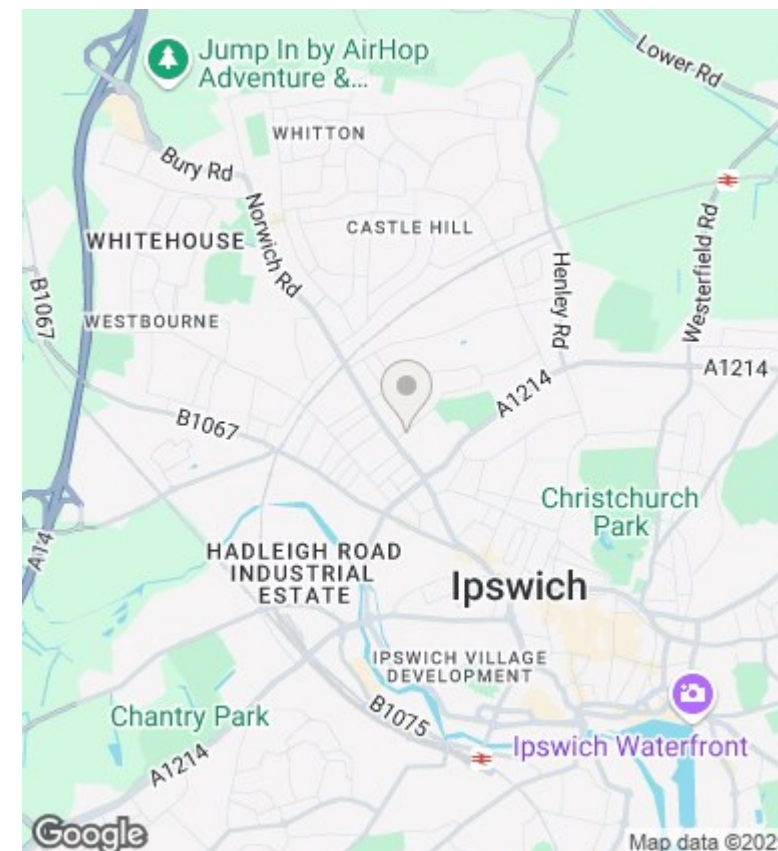
£1,295 PCM

- Unurnished three bedroom semi detached house
- Fitted kitchen with appliances
- Gas central heating
- EPC rating D
- Situated to the North West of Ipswich
- First floor bathroom with a shower
- Enclosed rear garden
- Entrance hall
- Double glazed
- On street parking





While every attempt has been made to ensure the accuracy of the floorplan contained herein, measurements of doors, windows, rooms and any other items are approximate and no responsibility is taken for any error, omission or misstatement. This plan is for illustrative purposes only and should be used as a guide to any prospective purchaser. The services, systems and appliances shown have not been tested and no guarantee as to their operability or efficiency can be given. Made with Metrepro ©2025



## Directions

## Viewings

Viewings by arrangement only. Call 01473 221 399 to make an appointment.

## EPC Rating:

D

Energy Efficiency Rating		
	Current	Potential
Very energy efficient - lower running costs		
(92 plus) <b>A</b>		
(81-91) <b>B</b>		82
(69-80) <b>C</b>		
(55-68) <b>D</b>	59	
(39-54) <b>E</b>		
(21-38) <b>F</b>		
(1-20) <b>G</b>		
Not energy efficient - higher running costs		
England & Wales		EU Directive 2002/91/EC