

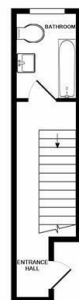
KEYSTONE



Gippeswyk Avenue, Ipswich, IP2 9AD

£725 PCM

- Unfurnished one bedroom apartment
- Duplex (two floors)
- Open plan lounge
- EPC Rating E
- Top/2nd Floor
- Available now
- Bathroom with bath & shower
- Close to Ipswich Train Station
- Fitted Kitchen
- NO Parking



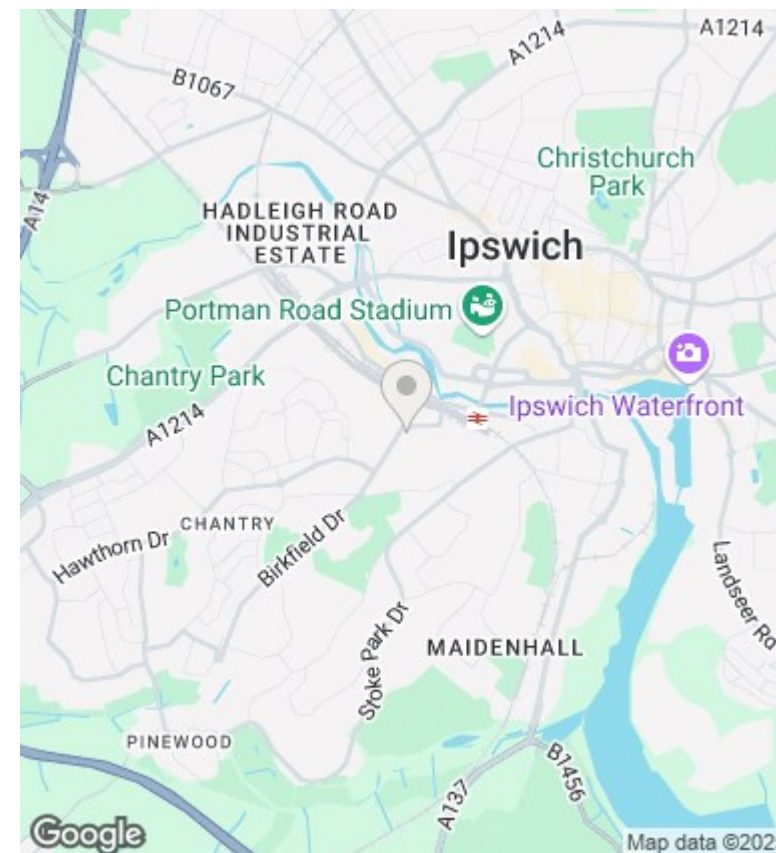
GROUND FLOOR
APPROX. FLOOR
AREA 134 SQ.FT.
(12.4 SQ.M.)



1ST FLOOR
APPROX. FLOOR
AREA 399 SQ.FT.
(37.1 SQ.M.)

TOTAL APPROX. FLOOR AREA 533 SQ.FT. (49.5 SQ.M.)

Whilst every attempt has been made to ensure the accuracy of the floor plan contained here, measurements of doors, windows, rooms and any other items are approximate and no responsibility is taken for any error, omission, or mis-statement. This plan is for illustrative purposes only and should be used as such by any prospective purchaser. The services, systems and appliances shown have not been tested and no guarantee as to their operability or efficiency can be given.
Made with Metropix G2019



Directions

Viewings

Viewings by arrangement only. Call 01473 221 399 to make an appointment.

EPC Rating:

E

Energy Efficiency Rating		
	Current	Potential
Very energy efficient - lower running costs		
(92 plus) A		
(81-91) B		
(69-80) C		
(55-68) D		63
(39-54) E	40	
(21-38) F		
(1-20) G		
Not energy efficient - higher running costs		
England & Wales		EU Directive 2002/91/EC