

KEYSTONE



Provan Court, Ipswich, IP3 8GG Offers In Excess Of £120,000

Ground Floor Apartment
Lounge/Diner
En-Suite
Allocated Parking
No Onward Chain

Two Bedrooms
Kitchen
Bathroom
Popular Location

Provan Court, Ipswich IP3 8GG

Welcome to Provan Court, a charming apartment located in the popular east of Ipswich. This delightful property boasts 2 bedrooms with master benefitting from en-suite, making it an ideal space for a small family or professionals looking for a comfortable living arrangement. Open plan living/dining and kitchen offers a social space to entertain guests.

Situated on the ground floor, this apartment offers easy access and convenience for its residents. The apartment offers an allocated parking space.

The current owner has updated the bathroom and en-suite to give a more modern feel to the property. The property also is also offered with no onward chain.

Don't miss out on the opportunity to own or rent this wonderful apartment call 01473 221399 to arrange your viewing.

 2  2  null  D



Entarance Door

Leading to hallway with built in storage cupboards.

Lounge/Diner

20'9 x 10'3

Kitchen

Bedroom One

12 x 11'5

En-Suite

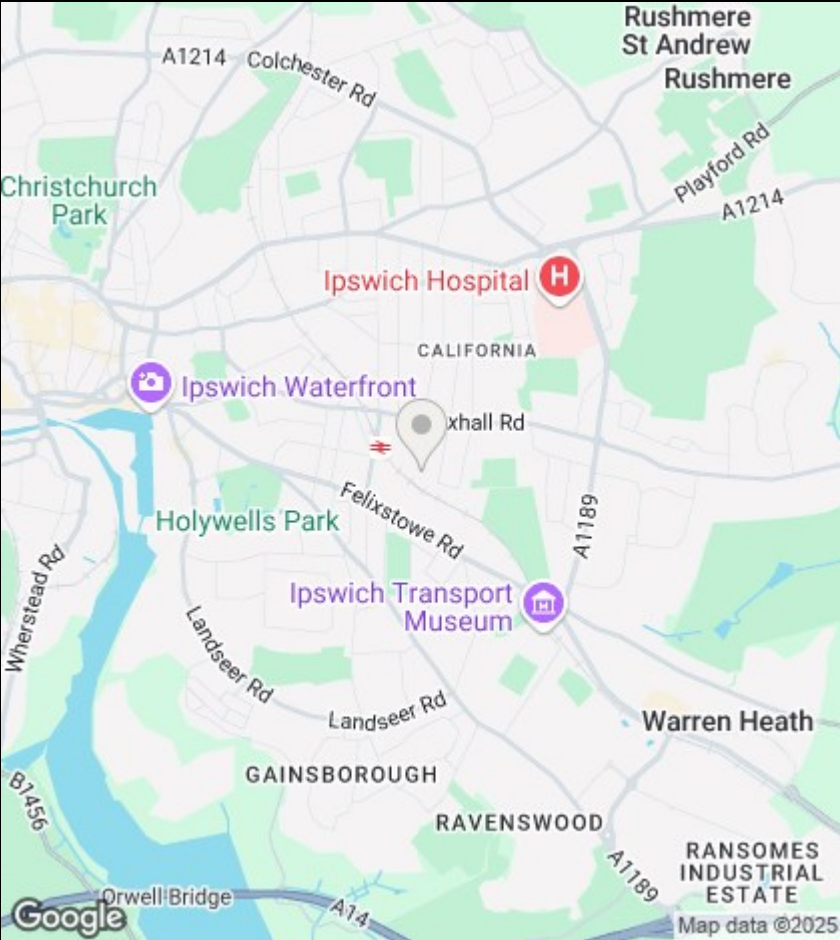
Bedroom Two

11'2 7'1

Bathroom

Outside

The property benefits from an allocated parking space.



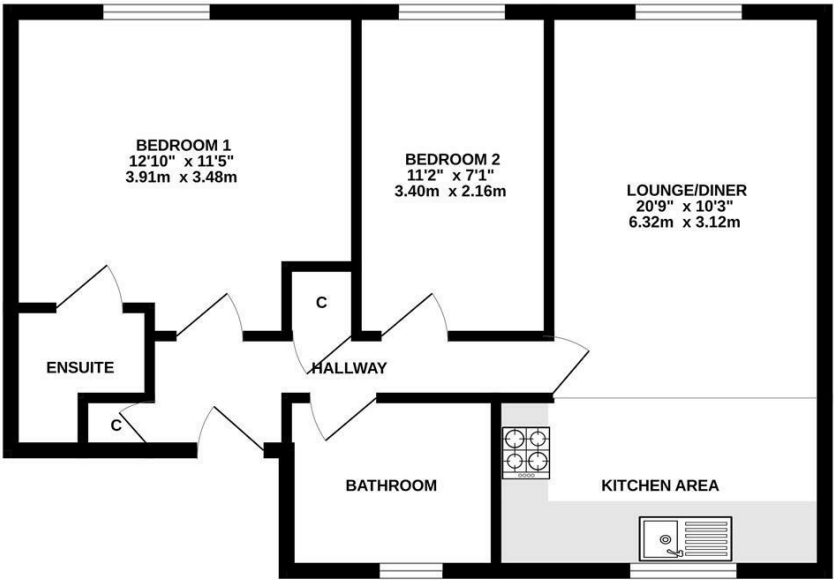
Viewings

Viewings by arrangement only. Call 01473 221 399 to make an appointment.

EPC Rating:
D

Energy Efficiency Rating		
	Current	Potential
Very energy efficient - lower running costs		
(92 plus) A		
(81-91) B		77
(69-80) C	66	
(55-68) D		
(39-54) E		
(21-38) F		
(1-20) G		
Not energy efficient - higher running costs		
England & Wales		EU Directive 2002/91/EC

GROUND FLOOR



Whilst every attempt has been made to ensure the accuracy of the floorplan contained here, measurements of doors, windows, rooms and any other items are approximate and no responsibility is taken for any error, omission or mis-statement. This plan is for illustrative purposes only and should be used as such by any prospective purchaser. The services, systems and appliances shown have not been tested and no guarantee as to their operability or efficiency can be given.
Made with Mapbox ©2024