

# KEYSTONE



Limestone Close, Great Blakenham, Ipswich, IP6 0FG  
Offers In Excess Of £250,000

End Terraced House  
Lounge  
Cloakroom  
Garden  
Popular Location

Three Bedrooms  
Kitchen/Diner  
Family Bathroom  
Two Parking Spaces  
Immaculate Throughout



# Limestone Close, Ipswich IP6 0FG

Welcome to this charming property located in the sought-after Limestone Close, Great Blakenham. This delightful end-terrace house boasts a perfect balance of comfort and style, making it an ideal home for families or professionals.

Upon entering, you are greeted by a spacious reception room, perfect for entertaining guests. The property features three bedrooms, providing ample space for a growing family or for those in need of a home office.

The modern design and pristine condition of the kitchen/diner adds a touch of luxury to everyday living. With cloakroom and well-presented bathroom offers convenience when entertaining.

The tranquil bedroom offers a great space to unwind after a busy day and one of the standout features of this property is the two convenient parking spaces outside.



Lounge

Kitchen/Diner

Cloakroom

Landing

Bedroom One

Bedroom Two

Bedroom Three

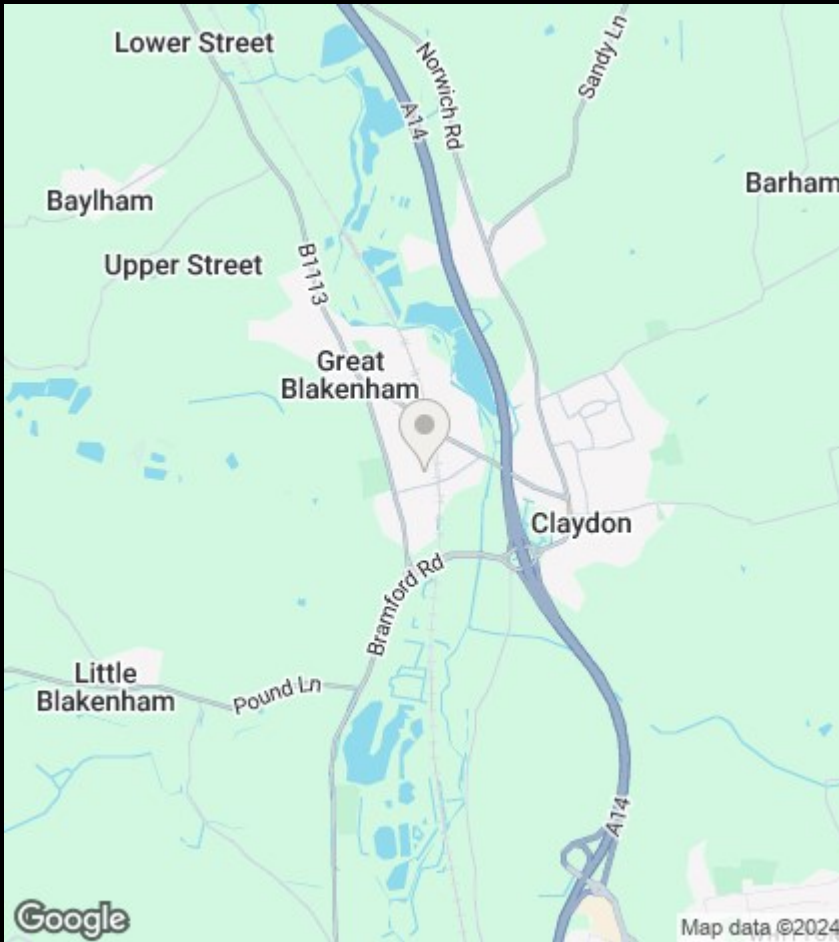
Bathroom

Outside

Two Parking space and garden.

Agents Note

The owner has said that the estate is subject to a monthly service charge of £42.18



## Viewings

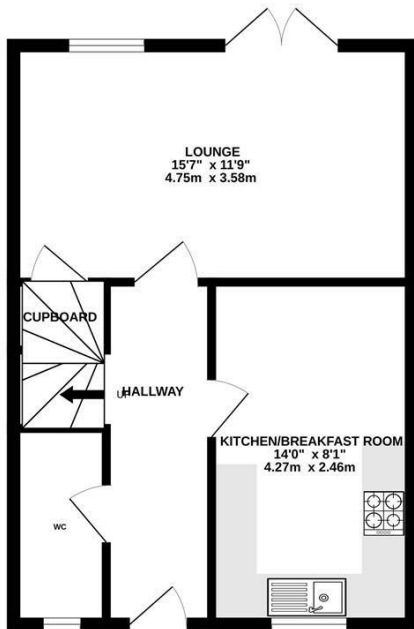
Viewings by arrangement only. Call 01473 221 399 to make an appointment.

## EPC Rating:

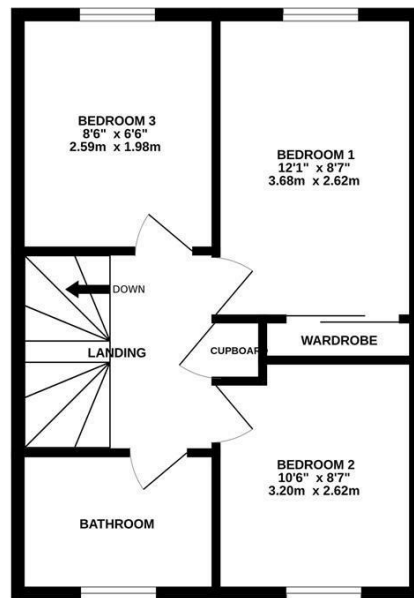
B

Energy Efficiency Rating		Current	Potential
Very energy efficient - lower running costs			
(92 plus) <b>A</b>			100
(81-91) <b>B</b>		88	
(69-80) <b>C</b>			
(55-68) <b>D</b>			
(39-54) <b>E</b>			
(21-38) <b>F</b>			
(1-20) <b>G</b>			
Not energy efficient - higher running costs			
England & Wales		EU Directive 2002/91/EC	

GROUND FLOOR



1ST FLOOR



Whilst every attempt has been made to ensure the accuracy of the floorplan contained here, measurements of doors, windows, rooms and any other items are approximate and no responsibility is taken for any error, omission or mis-statement. This plan is for illustrative purposes only and should be used as such by any prospective purchaser. The services, systems and appliances shown have not been tested and no guarantee as to their operability or efficiency can be given.

Made with Metropix ©2024