

KEYSTONE



Waveney Road, Ipswich, IP1 5DG

Offers Over £160,000

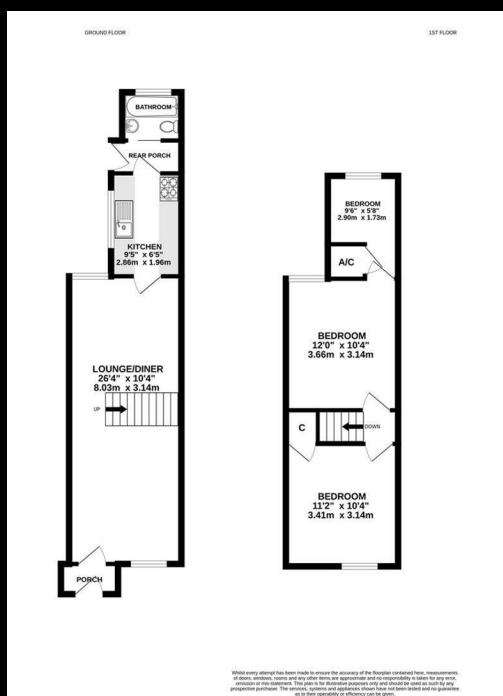
- Mid Terrace Home
- Lounge/Diner
- Ground Floor Bathroom
- Garden
- Great Investment Opportunity
- Three Bedrooms
- Kitchen
- Porch
- No Onward Chain
- Great First Time Buy

Keystone are pleased to bring to the market this charming Victorian mid terrace home located on Waveney Road in Ipswich! The property boasts porch, one reception room, three bedrooms, kitchen and a well-appointed bathroom,

The presence of a porch adds a touch of practicality to the property. Additionally, the absence of an onward chain simplifies the buying process, allowing for a smoother transition.

While the property may require some modernisation, this presents an exciting opportunity for you to put your personal touch on the space and truly make it your own. Imagine the possibilities of transforming this Victorian gem into a modern haven that reflects your style and preferences.

Don't miss out on the chance to own this lovely terrace home on Waveney Road. Contact us today to arrange a viewing and take the first step towards making this property your new home!



EPC Rating:

