

KEYSTONE



Woodpecker Road, Ipswich, IP2 0RS

Offers In Excess Of £200,000

Semi-Detached House
Lounge
Ground Floor Bathroom
Gas Central Heating
In Need Of Updating

Three Bedrooms
Kitchen/Diner
Off Road Parking
Popular Location
No Onward Chain

Woodpecker Road, Ipswich IP2 0RS

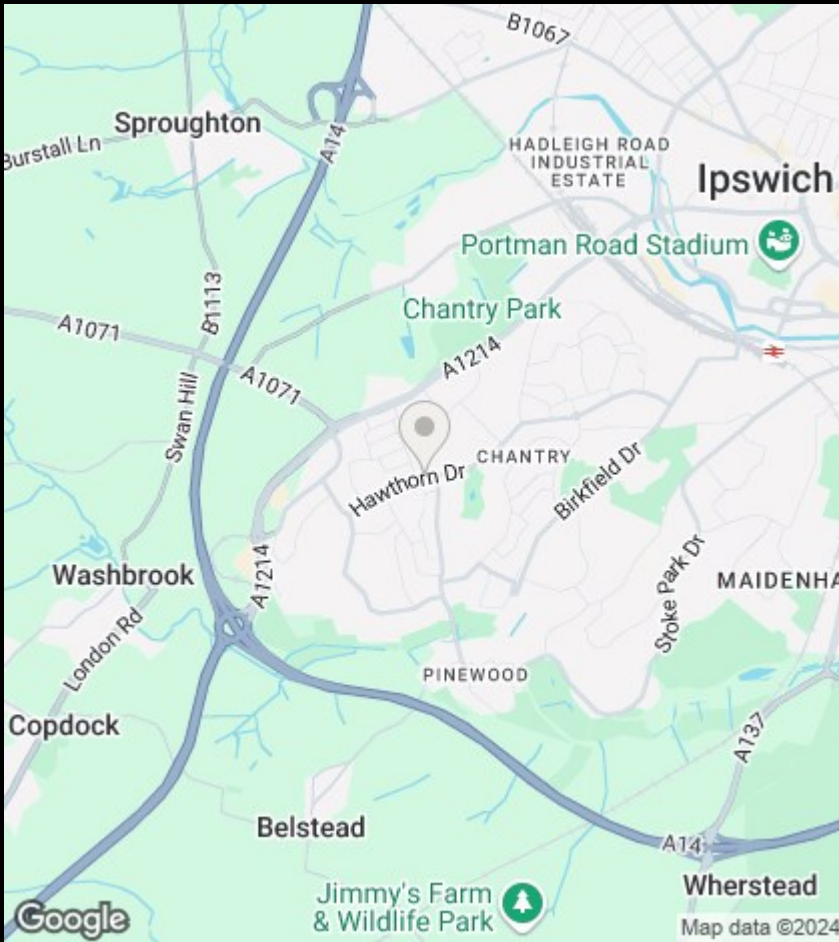
Welcome to Woodpecker Road, Ipswich - a semi-detached house with great potential! This property boasts a spacious reception room, three bedrooms, and good size plot. Situated in a popular location, this home offers parking and potential to extend the driveway further to accommodate several cars (SSTP).

Although this property is in need of updating, it presents a fantastic opportunity to transform it into your great home, with NO ONWARD CHAIN.

The property also provides easy access to local amenities, schools, and transport links, making it an ideal choice for families or individuals looking to settle down.

Don't miss out on the chance to put your personal touch on this lovely home in a sought-after area. Contact us today to arrange a viewing on 01473 221399.





Viewings

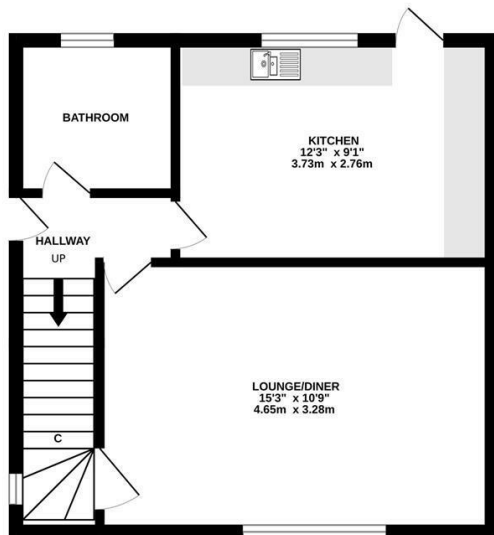
Viewings by arrangement only. Call 01473 221 399 to make an appointment.

EPC Rating:

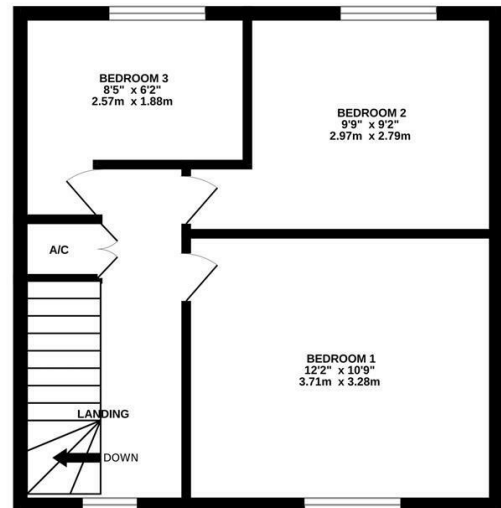
C

Energy Efficiency Rating		Current	Potential
Very energy efficient - lower running costs			
(92 plus) A			
(81-91) B			83
(69-80) C		69	
(55-68) D			
(39-54) E			
(21-38) F			
(1-20) G			
Not energy efficient - higher running costs			
England & Wales		EU Directive 2002/91/EC	

GROUND FLOOR



1ST FLOOR



Whilst every attempt has been made to ensure the accuracy of the floorplan contained here, measurements of doors, windows, rooms and any other items are approximate and no responsibility is taken for any error, omission or mis-statement. This plan is for illustrative purposes only and should be used as such by any prospective purchaser. The services, systems and appliances shown have not been tested and no guarantee as to their operability or efficiency can be given.
Made with Metropix ©2024