

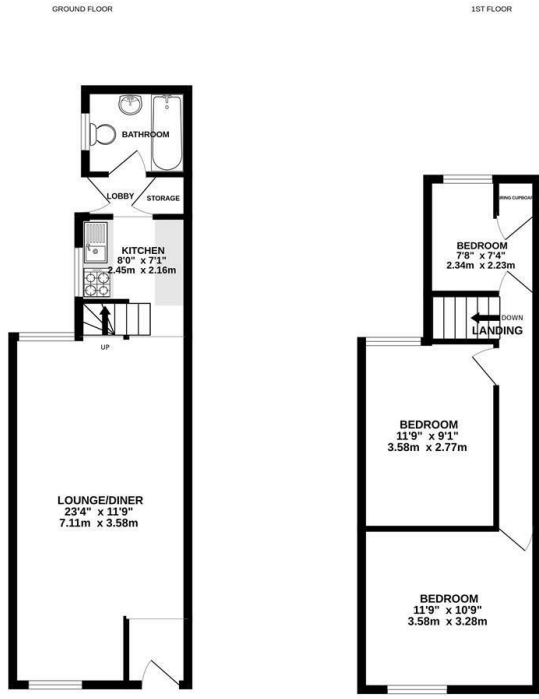
KEYSTONE



Upper Cavendish Street, Ipswich, IP3 8BT

£220,000

- Semi Detached Home
- Kitchen
- No Onward Chain
- Three Bedrooms
- Bathroom
- Popular East Ipswich Location
- Lounge/Diner
- Off Road Parking



Whilst every attempt has been made to ensure the accuracy of the floorplan contained here, measurements of doors, windows, rooms and any other items are approximate and no responsibility is taken for any error, omission or misstatement. This plan is for guidance purposes only and should be used as such for any prospective purchase. The services, systems and appliances shown have not been tested and no guarantee can be given for their operability or efficiency at the time of sale.
Made with MyHome 12/2024



Directions

Viewings

Viewings by arrangement only. Call 01473 221 399 to make an appointment.

EPC Rating:
D

Energy Efficiency Rating		Current	Potential
<i>Very energy efficient - lower running costs</i>			
(92 plus)	A		
(81-91)	B		85
(69-80)	C		
(55-68)	D	62	
(39-54)	E		
(21-38)	F		
(1-20)	G		
<i>Not energy efficient - higher running costs</i>			
England & Wales		EU Directive 2002/91/EC	