

KEYSTONE

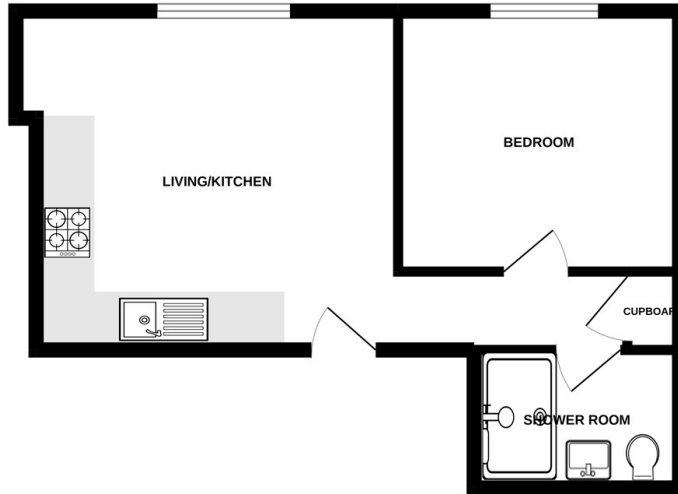


Burlington Road, Ipswich, IP1 2EU

£725 PCM

- Unfurnished One Bedroom Flat
- Kitchen With Integrated Appliances
- Permit Parking Available
- Close To Town Centre
- Shower Room
- EPC Rating - C
- Ground Floor
- Open Plan Living/Kitchen

GROUND FLOOR
375 sq.ft. (34.8 sq.m.) approx.



TOTAL FLOOR AREA: 375 sq.ft. (34.8 sq.m.) approx.
Whilst every attempt has been made to ensure the accuracy of the figures contained here, measurements of doors, windows, rooms and any other items are approximate and no responsibility is taken for any error, omission or mis-statement. This plan is for illustrative purposes only and should be used as such for any prospective purchaser. The services, systems and appliances shown have not been tested and no guarantee as to their operability or efficiency can be given.
Made with Metropix 10/2022



Directions

Viewings

Viewings by arrangement only. Call 01473 221 399 to make an appointment.

EPC Rating:

C

Energy Efficiency Rating		
	Current	Potential
<i>Very energy efficient - lower running costs</i>		
(92 plus) A		
(81-91) B		
(69-80) C	73	80
(55-68) D		
(39-54) E		
(21-38) F		
(1-20) G		
<i>Not energy efficient - higher running costs</i>		
England & Wales	EU Directive 2002/91/EC	