

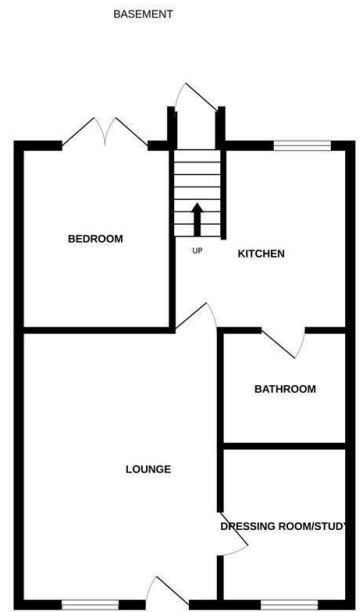
KEYSTONE



London Road, Ipswich, IP1 2HG

£725 PCM

- Unfurnished one bedroom flat
- Bathroom with a shower
- Double glazed
- Permit parking available
- Own entrance door
- French doors & courtyard
- AVAILABLE NOW
- Fitted kitchen
- Rear garden
- EPC rating - C



Directions

Viewings

Viewings by arrangement only. Call 01473 221 399 to make an appointment.

EPC Rating:
C

Energy Efficiency Rating		
	Current	Potential
<i>Very energy efficient - lower running costs</i>		
(92 plus) A		
(81-91) B		81
(69-80) C	71	
(55-68) D		
(39-54) E		
(21-38) F		
(1-20) G		
<i>Not energy efficient - higher running costs</i>		
England & Wales	EU Directive 2002/91/EC	