

KEYSTONE



Cliff Road, Ipswich, IP3 0AT
Offers In Excess Of £210,000

End Terraced House
Lounge
Kitchen
First Floor Shower Room
Close To Waterfront

Three Double Bedrooms
Dining Room
Cloakroom
Garden
No Onward Chain

Cliff Road, Ipswich IP3 0AT

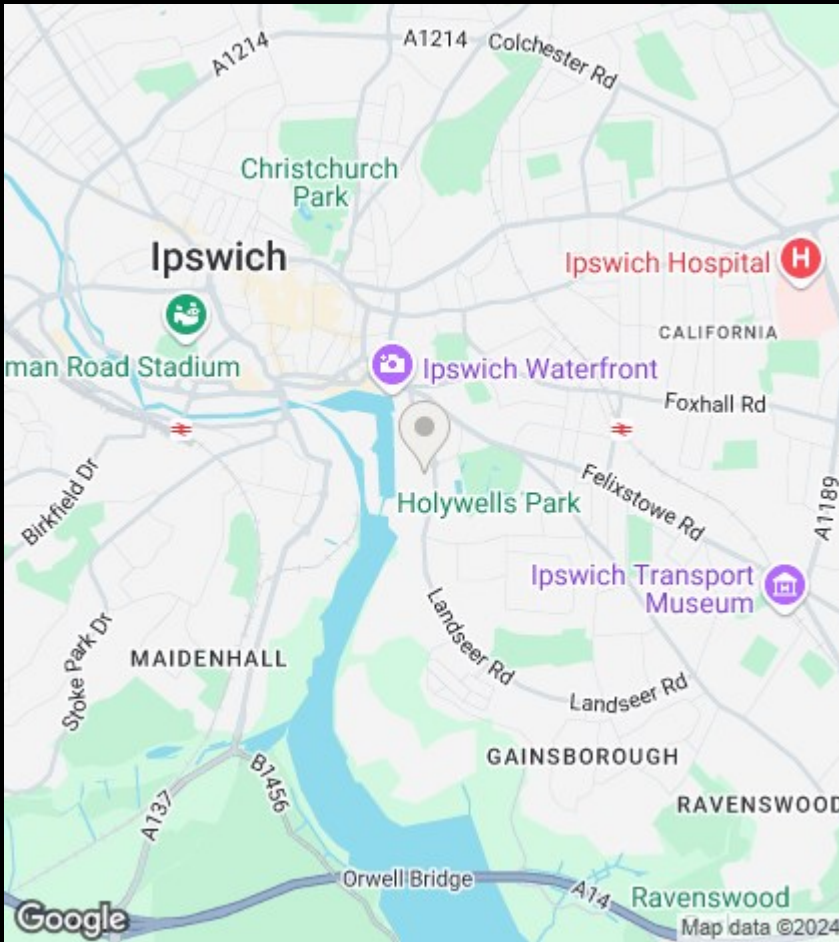
Keystone are pleased to offer this charming property located on Cliff Road in Ipswich! This end terrace house boasts two reception rooms, perfect for entertaining. With three double bedrooms, there's plenty of space for the whole family.

The property stand out feature is its location, ensuring convenience for all residents. Situated in a popular location just off the Waterfront, this house comes with the added benefit of no onward chain.

Conveniently located close to amenities, you'll have everything you need right at your doorstep. Whether it's shopping, dining this property offers easy access to all the essentials.

Don't miss out on this fantastic opportunity to own a lovely home in a sought-after area of Ipswich. Book a viewing today and envision the endless possibilities this property has to offer!





Viewings

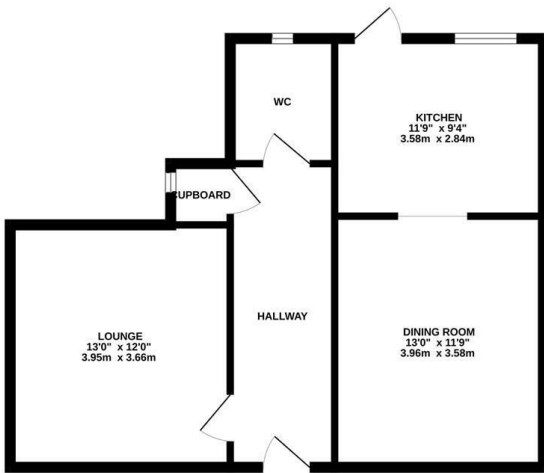
Viewings by arrangement only. Call 01473 221 399 to make an appointment.

EPC Rating:

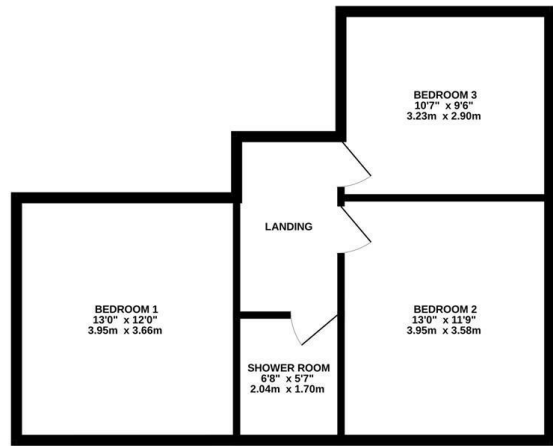
D

Energy Efficiency Rating		Current	Potential
Very energy efficient - lower running costs			
(92 plus) A			
(81-91) B			82
(69-80) C			
(55-68) D		61	
(39-54) E			
(21-38) F			
(1-20) G			
Not energy efficient - higher running costs			
England & Wales		EU Directive 2002/91/EC	

GROUND FLOOR



1ST FLOOR



Whilst every attempt has been made to ensure the accuracy of the floorplan contained here, measurements of doors, windows, rooms and any other items are approximate and no responsibility is taken for any error, omission or mis-statement. This plan is for illustrative purposes only and should be used as such by any prospective purchaser. The services, systems and appliances shown have not been tested and no guarantee as to their operability or efficiency can be given.
Made with Metropix ©2024