

KEYSTONE

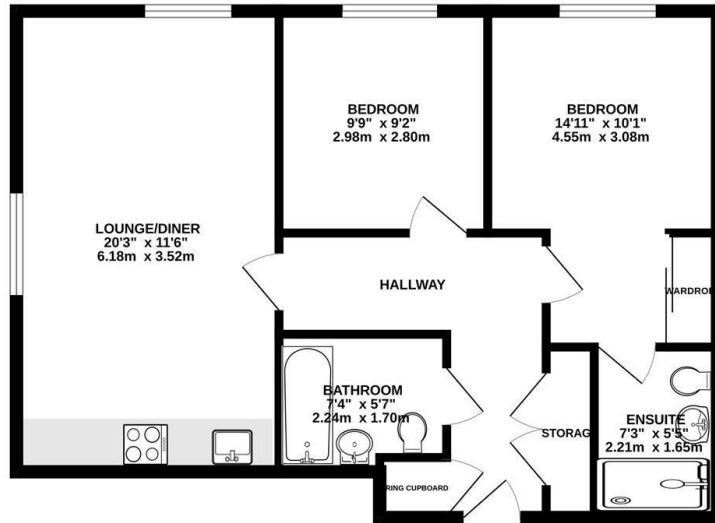


The Mill, College Street, Ipswich, IP4 1FP

£895 PCM

- Two bedroom first floor apartment
- Bathroom & ensuite shower room
- Double glazed
- EPC Rating - C
- Situated by the Waterfront
- Fitted kitchen with appliances
- Electric heating
- Entrance hall
- Living room
- Allocated secure parking space

GROUND FLOOR
654 sq.ft. (60.8 sq.m.) approx.



TOTAL FLOOR AREA: 654 sq.ft. (60.8 sq.m.) approx.
Whilst every attempt has been made to ensure the accuracy of the floorplan contained here, measurements of doors, windows, rooms and any other items are approximate and no responsibility is taken for any error, omission or misstatement. This plan is for illustrative purposes only and should be used as such by any prospective purchaser. The services, systems and appliances shown have not been tested and no guarantee as to their operability or efficiency can be given.
Made with Metropix ©2024



Directions

No HB

Viewings

Viewings by arrangement only. Call 01473 221 399 to make an appointment.

EPC Rating:

C

Energy Efficiency Rating		Current	Potential
<i>Very energy efficient - lower running costs</i>			
(92 plus) A			84
(81-91) B		71	
(69-80) C			
(55-68) D			
(39-54) E			
(21-38) F			
(1-20) G			
<i>Not energy efficient - higher running costs</i>			
England & Wales		EU Directive 2002/91/EC	