

KEYSTONE

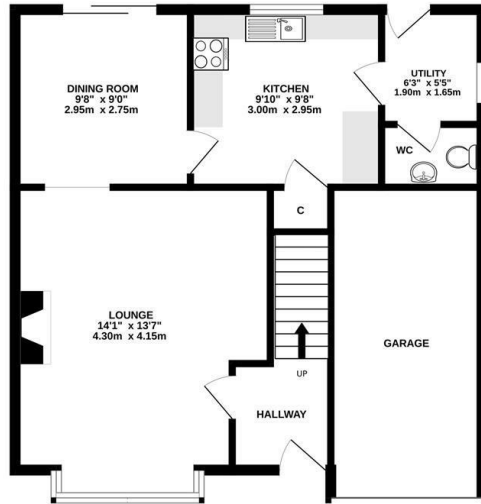


Newby Drive, Rushmere St Andrew, Ipswich, IP4 5UY

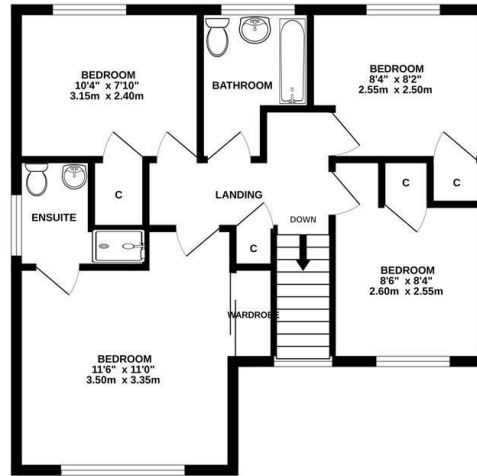
£1,495 PCM

- Unfurnished four bedroom detached house
- Kitchen & Utility room
- Garage & Driveway
- EPC Rating D
- Situated in Rushmere St Andrew
- Lounge & Dining room
- Enclosed Rear garden
- Entrance hall & Cloakroom
- First floor bathroom & En suite
- Gas heating & Double glazed

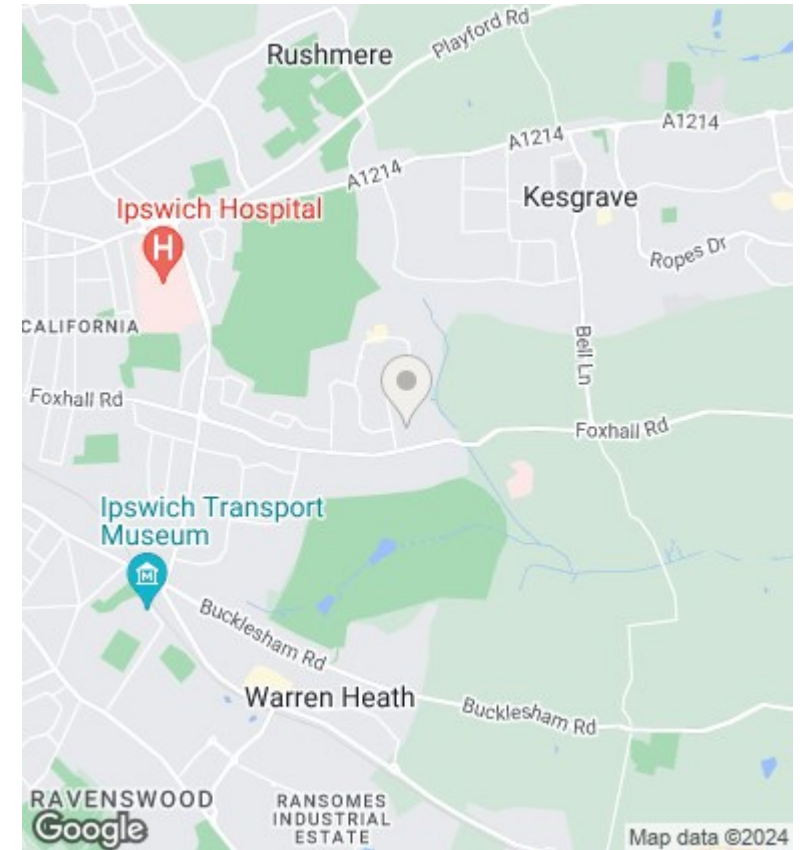
GROUND FLOOR



1ST FLOOR



Whilst every attempt has been made to ensure the accuracy of the floorplan contained here, measurements of doors, windows, rooms and any other items are approximate and no responsibility is taken for any error, omission or mis-statement. This plan is for illustrative purposes only and should be used as such by any prospective purchaser. The services, systems and appliances shown have not been tested and no guarantee as to their operability or efficiency can be given.
Made with Metropix ©2024



Directions

Viewings

Viewings by arrangement only. Call 01473 221 399 to make an appointment.

EPC Rating:

D

