

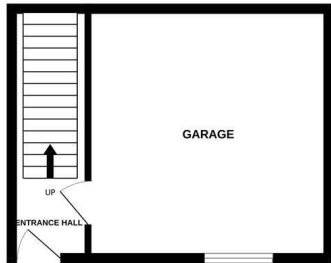


Roberts Close, Kesgrave, Suffolk, IP5 2HP

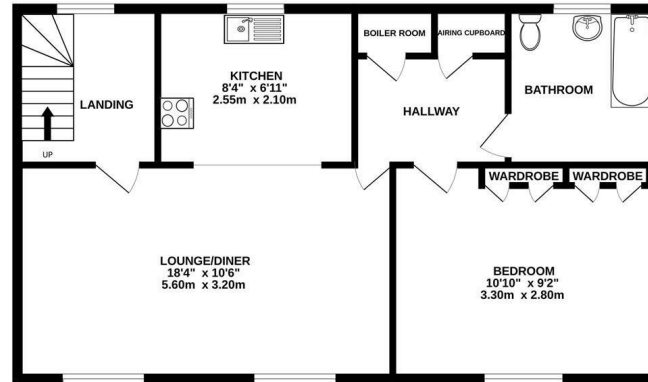
£895 PCM

- One bedroom coach house
- Fitted kitchen with appliances
- Double bedroom with fitted wardrobes
- EPC rating - C
- Part Furnished
- Lounge
- Garage
- Situated on Grange Farm, Kesgrave
- Bathroom with a shower
- Gas central heating and UPVC double glazing

GROUND FLOOR
262 sq.ft. (24.3 sq.m.) approx.

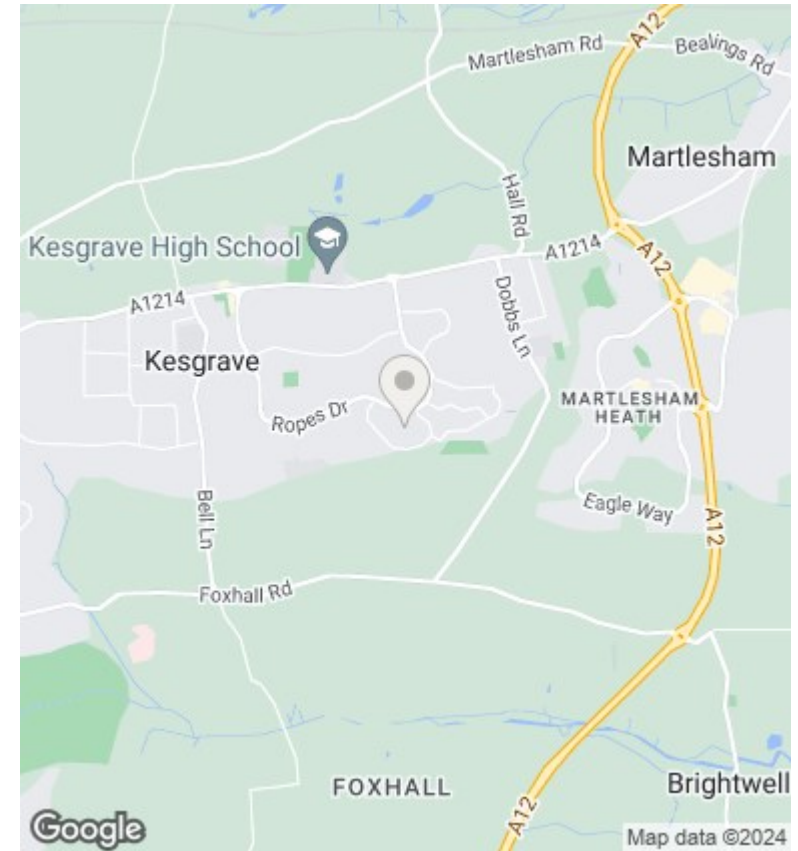


FIRST FLOOR
781 sq.ft. (72.5 sq.m.) approx.



TOTAL FLOOR AREA : 1042 sq.ft. (96.8 sq.m.) approx.

Whilst every attempt has been made to ensure the accuracy of the floorplan contained here, measurements of doors, windows, rooms and any other items are approximate and no responsibility is taken for any error, omission or mis-statement. This plan is for illustrative purposes only and should be used as such by any prospective purchaser. The services, systems and appliances shown have not been tested and no guarantee as to their operability or efficiency can be given.
Made with Metropix ©2024



Directions

Viewings

Viewings by arrangement only. Call 01473 221 399 to make an appointment.

EPC Rating:

C

Energy Efficiency Rating		Current	Potential
<i>Very energy efficient - lower running costs</i>			
(92 plus) A			
(81-91) B			
(69-80) C		70	72
(55-68) D			
(39-54) E			
(21-38) F			
(1-20) G			
<i>Not energy efficient - higher running costs</i>			
England & Wales	EU Directive 2002/91/EC		