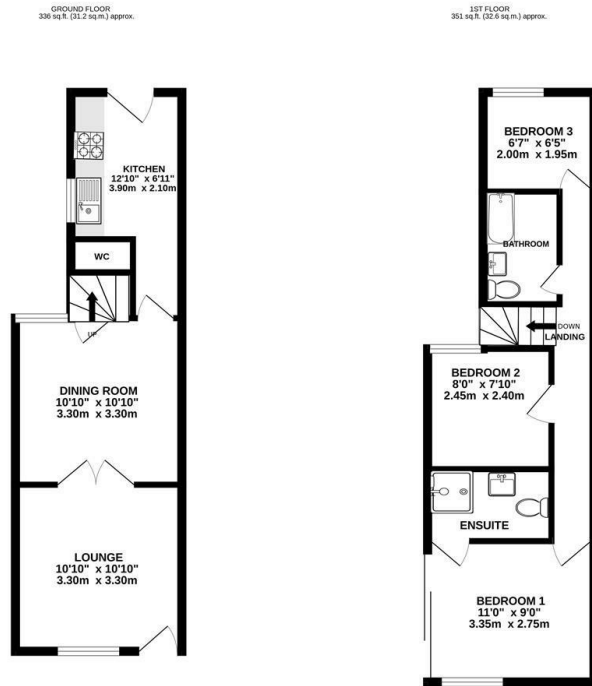




Bramford Lane, Ipswich, IP1 4ER

£925 PCM

- Unfurnished three bedroom house
- Cloakroom, bathroom & en suite
- Enclosed rear garden
- Lounge & Dining room
- Gas central heating
- On Road Parking
- Fitted Kitchen
- Double glazed
- Available NOW



TOTAL FLOOR AREA: 687 sq ft. (63.8 sq m.) approx.  
 Whilst every attempt has been made to ensure the accuracy of the floorplan (based on measurements of doors, windows, stairs and any other items) an approximate and no responsibility is taken for any error, omission or misstatement. This plan is for guidance purposes only and should be used as a guide for any prospective purchaser. The services, systems and appliances shown have not been tested and no guarantee as to their operability or efficiency can be given.  
 Made with floorplan 2/2024



## Directions

## Viewings

Viewings by arrangement only. Call 01473 221 399 to make an appointment.

## EPC Rating:

C

