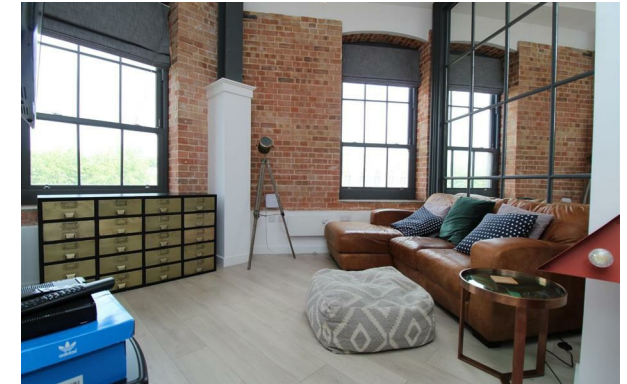


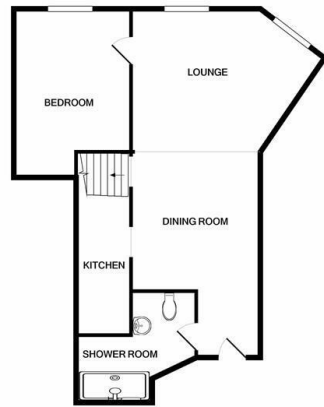
KEYSTONE



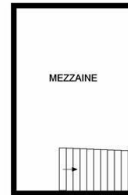
Mill House, College Street, Ipswich, IP4 1FW

£895 PCM

- Part Furnished one bedroom apartment
- Entrance Hall
- Double bedroom
- EPC Rated E
- No Parking.
- Fitted Kitchen
- Mezzanine Floor/Second Bedroom
- Situated on Ipswich Waterfront
- Open Plan living room with brickwork & high ceilings
- Double Glazed & Electric heating



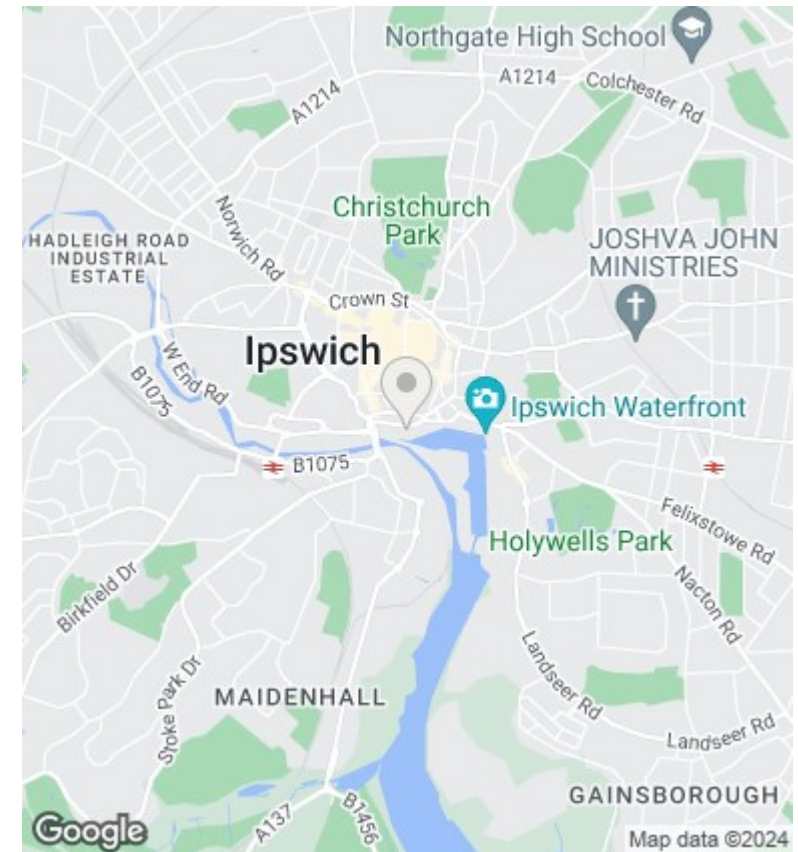
GROUND FLOOR
APPROX. FLOOR
AREA 67 SQ.FT.
(62.0 SQ.M.)



1ST FLOOR
APPROX. FLOOR
AREA 179 SQ.FT.
(16.6 SQ.M.)

TOTAL APPROX. FLOOR AREA 846 SQ.FT. (78.6 SQ.M.)

Whilst every attempt has been made to ensure the accuracy of the floor plan contained here, measurements of doors, windows, rooms and any other items are approximate and no responsibility is taken for any error, omission, or mis-statement. This plan is for illustrative purposes only and should be used as such by any prospective purchaser. The services, systems and appliances shown have not been tested and no guarantee as to their operability or efficiency can be given.
Made with Metropix ©2021



Directions

Viewings

Viewings by arrangement only. Call 01473 221 399 to make an appointment.

EPC Rating:

E

Energy Efficiency Rating		Current	Potential
<i>Very energy efficient - lower running costs</i>			
(92 plus) A			
(81-91) B			
(69-80) C			
(55-68) D		52	52
(39-54) E			
(21-38) F			
(1-20) G			
<i>Not energy efficient - higher running costs</i>			
England & Wales		EU Directive 2002/91/EC	