

# KEYSTONE

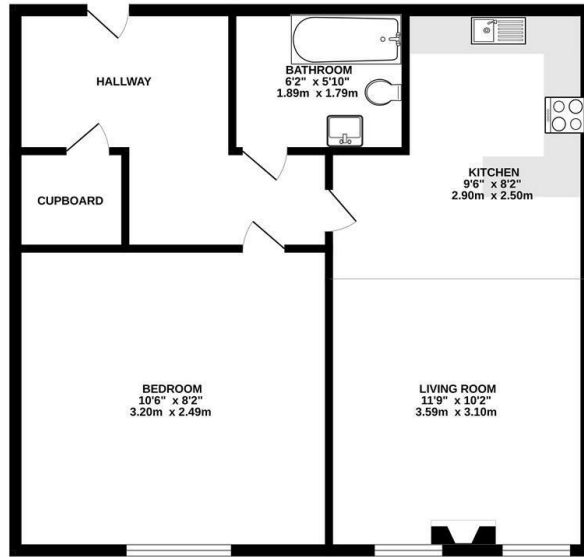


Old School House, Shotley Gate, Ipswich, IP9 1QP

£695 Per Month

- FURNISHED one bedroom flat
- Bathroom with a shower
- Electric heating
- Available 25/04/2024
- Ground Floor
- Fitted kitchen with appliances
- Allocated parking space
- Entrance hall
- Open plan living room
- EPC Rating D

GROUND FLOOR  
729 sq.ft. (67.7 sq.m.) approx.



TOTAL FLOOR AREA: 729 sq.ft. (67.7 sq.m.) approx.  
Whilst every attempt has been made to ensure the accuracy of the foregoing contained here, measurements of doors, windows, rooms and any other items are approximate and no responsibility is taken for any error, omission or misstatement. This plan is for illustrative purposes only and should be used as such by any prospective purchaser. The services, systems and appliances shown have not been tested and no guarantee is given as to their operability or efficiency over time.  
 Made with Metropix ©2024



Directions

Viewings

Viewings by arrangement only. Call 01473 221 399 to make an appointment.

EPC Rating:  
D

Energy Efficiency Rating		Current	Potential
<i>Very energy efficient - lower running costs</i>			
(92 plus) <b>A</b>			<b>83</b>
(81-91) <b>B</b>			
(69-80) <b>C</b>			
(55-68) <b>D</b>		<b>65</b>	
(39-54) <b>E</b>			
(21-38) <b>F</b>			
(1-20) <b>G</b>			
<i>Not energy efficient - higher running costs</i>			
<b>England &amp; Wales</b>		EU Directive 2002/91/EC	