

# KEYSTONE



Dallinghoo Road, Wickham Market, Woodbridge, IP13 0RY

£375,000

- Extended Semi-Detached House
  - Lounge
  - Kitchen/Breakfast Room
  - Ground Floor Shower Room
  - Consevatory
- Three Bedrooms
  - Dining Room
  - Utility Room
- First Floor Bathroom
- Garage & Driveway

Entrance Door  
Leading to hallway with stairs to first

Lounge  
13'5 x 13'5  
Bay window to front, radiator and gas fire place.

Dining Room  
12 x 10'9  
Door to rear, window to rear and radiator.

Conservatory  
9'4 x 8'9  
French doors to rear, radiator and tiled flooring.

Kitchen/Breakfast Room  
17'9 x 8'9  
Fitted with a range of base units and drawers and matching wall mounted cabinets, one and a half sink and drainer unit with tiled splash backs, double oven with hob and extractor over, integrated fridge, integrated dishwasher, tiled flooring, door to side and window to rear.

Inner Lobby  
19'5 x 4'6  
Door to front and rear, radiator and space for chest freezer and fridge.

Utility Room  
7'3 x 7'1  
Fitted with base units and wall mounted cabinets, sink and drainer unit with tiled splash backs, space for washing machine, tiled flooring and window to rear.

Shower Room  
Fitted with shower cubicle, w/c, hand basin, tiled splash backs, shaving point, heated towel rail and tiled flooring.

First Floor  
Landing with window to side and loft access with power and light connected.

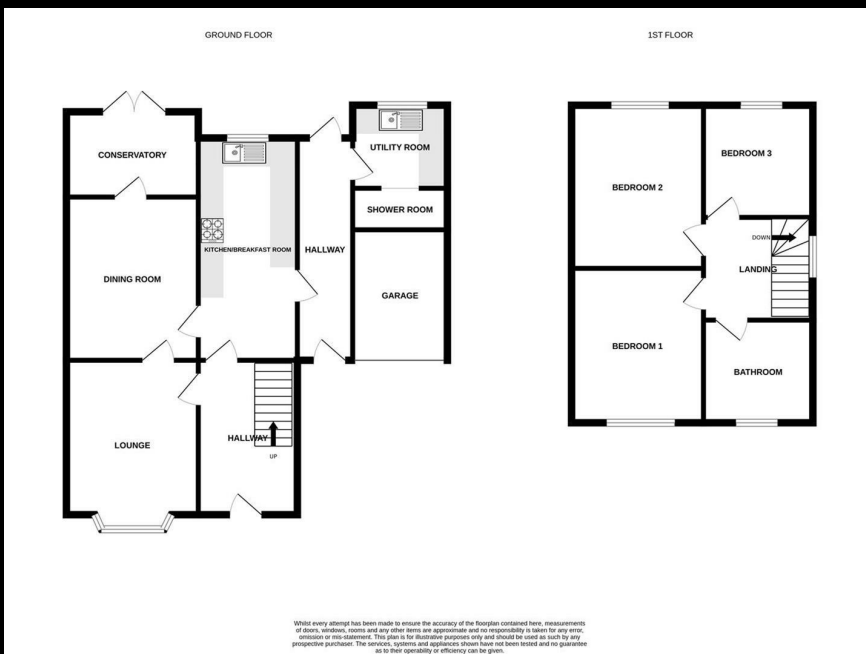
Bedroom One  
12 x 10'9  
Window to front, radiator and two built in wardrobes.

Bedroom Two  
11'9 x 9'7  
Window to rear and radiator.

Bedroom Three  
9 x 8  
Window to rear and radiator.

Bathroom  
Fitted with a suite comprising of panel bath with shower over, w/c, vanity sink, tiled splash backs, tiled flooring, heated towel rail, built in airing cupboard and window to front.

Outside  
To the front of the property there is a generous block paved driveway that provides off road parking for several cars and leads to a garage with up and over door and power and light connected.  
The rear garden is also very generous and has a patio and a mixture of trees and shrubs with timber shed and green house. The property has lots of potential to extend further (STP).



## EPC Rating:

