



41a New Road, Guildford, GU4 8LR  
£1,450 pcm

2



2



1

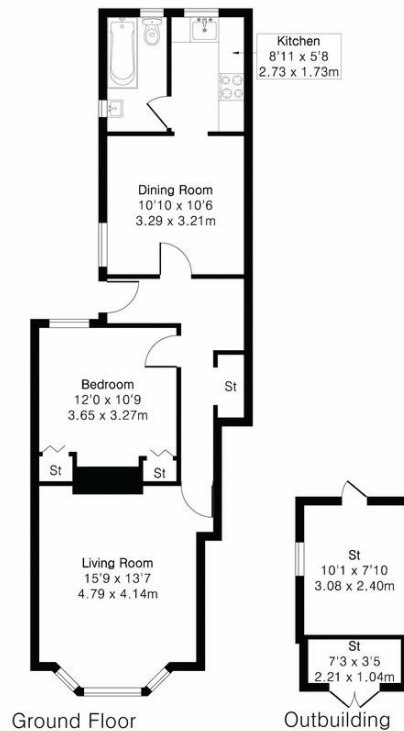




**Approximate Gross Internal Area 736 sq ft - 68 sq m**

Ground Floor Area 629 sq ft – 58 sq m

Outbuilding Area 107 sq ft – 10 sq m



Although Pink Plan Ltd ensures the highest level of accuracy, measurements of doors, windows and rooms are approximate and no responsibility is taken for error, omission or misstatement. These plans are for representation purposes only as defined by RICS code of measuring practice. No guarantee is given on total square footage of the property within this plan. The figure icon is for initial guidance only and should not be relied on as a basis of valuation.

