

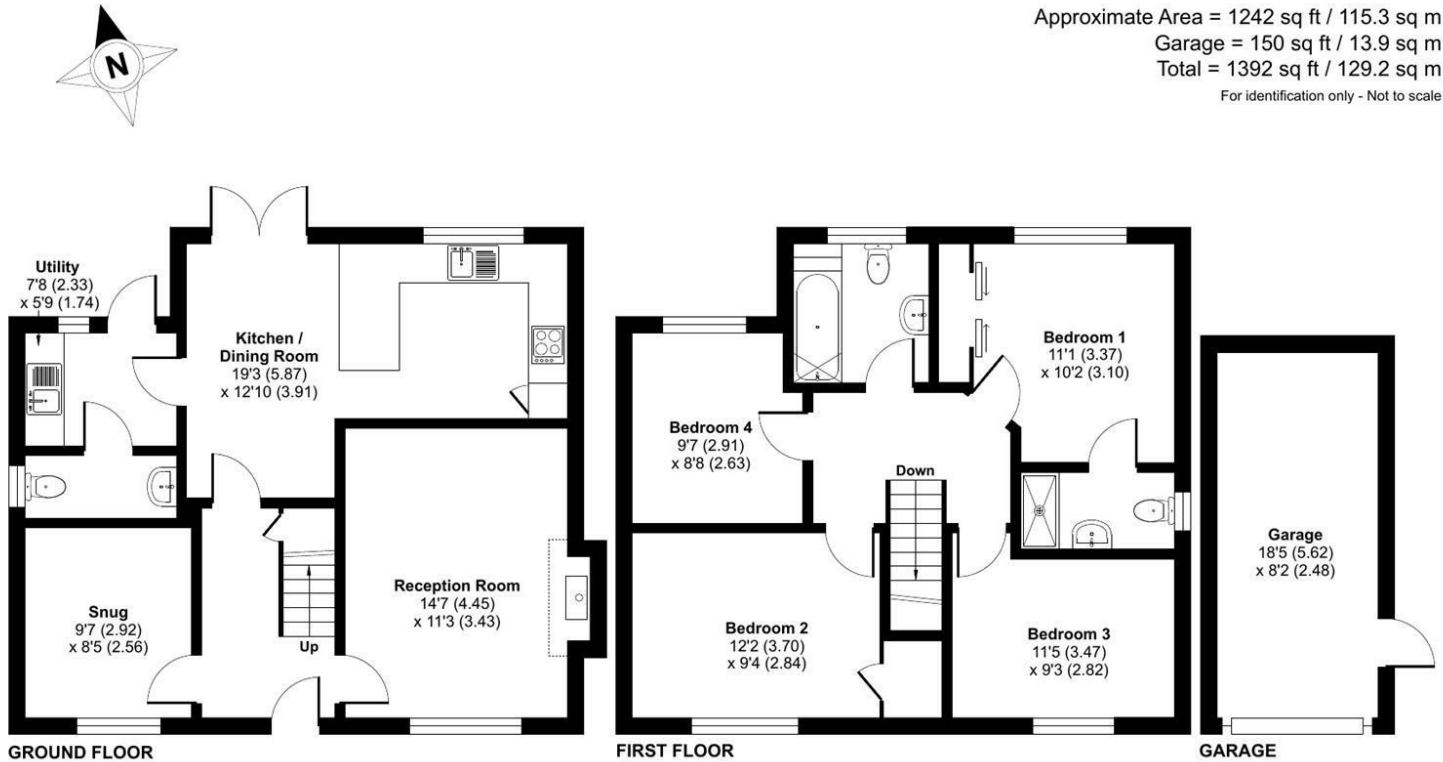
FOR SALE

8 Maes Sarn Wen Four Crosses, Llanymynech, Powys, SY22 6NT



Maes Sarn Wen, Four Crosses, Llanymynech, SY22

Approximate Area = 1242 sq ft / 115.3 sq m  
Garage = 150 sq ft / 13.9 sq m  
Total = 1392 sq ft / 129.2 sq m  
For identification only - Not to scale



Floor plan produced in accordance with RICS Property Measurement 2nd Edition, Incorporating International Property Measurement Standards (IPMS2 Residential). © nchecom 2025. Produced for Halls. REF: 1248466



FOR SALE

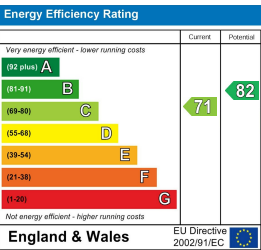
Offers in the region of £359,950

8 Maes Sarn Wen Four Crosses, Llanymynech, Powys, SY22 6NT

**Property to sell?** We would be delighted to provide you with a free no obligation market assessment of your existing property. Please contact your local Halls office to make an appointment. **Mortgage/financial advice.** We are able to recommend a completely independent financial advisor,

who is authorised and regulated by the FCA. Details can be provided upon request. **Do you require a surveyor?** We are able to recommend a completely independent chartered surveyor. Details can be provided upon request.

Energy Performance Rating



Nestled in the charming village of Four Crosses, Llanymynech, this nearly new, modern detached house offers a perfect blend of contemporary living and serene countryside charm. With four well-proportioned bedrooms, this property is ideal for families seeking space and comfort.

The house boasts two stylish bathrooms, ensuring convenience for all residents. The high specification of the property is evident throughout, with modern fixtures and fittings that enhance the overall appeal. The open-plan living areas are designed to create a warm and inviting atmosphere, perfect for both relaxation and entertaining.



01691 670 320

**Oswestry Sales**  
20 Church Street, Oswestry, SY11 2SP  
E: oswestry@hallsgb.com




IMPORTANT NOTICE. Halls Holdings Ltd and any joint agents for themselves, and for the Vendor of the property whose Agents they are, give notice that: (i) These particulars are produced in good faith, are set out as a general guide only and do not constitute any part of a contract (ii) No person in the employment of or any agent of or consultant to Halls Holdings has any authority to make or give any representation or warranty whatsoever in relation to this property (iii) Measurements, areas and distances are approximate. Floor plans and photographs are for guidance purposes only (photographs are taken with a wide angled / zoom lenses) and dimensions shapes and precise locations may differ (iv) It must not be assumed that the property has all the required planning or building regulation consents. Halls Holdings, Bowmen Way, Shrewsbury, Shropshire SY4 3DR. Registered in England 06597073.




hallsgb.com

01691 670 320






2 Reception Room/s



4 Bedroom/s



2 Bath/Shower Room/s



- **Spacious Detached Family Home**
- **Flexible & Versatile Accommodation**
- **High Specification Kitchen**
- **Well Appointed Bathrooms**
- **Driveway Parking**
- **Detached Garage**

**DIRECTIONS**  
Take the A483 out of Oswestry towards Welshpool, passing through Llanymynech. On reaching Four Crosses turn left sign posted Llandrinio and proceed along this road passing the Foxen Manor Estate on the left hand side. Proceed round the corner where Maes Sarn Wen will be viewed on the left hand side.

**SITUATION**  
The property is attractively situated on the outskirts of this recently established development, built by Shingler Homes. The property sits facing to the front out onto open farmland with Criggion Hill seen in the distance. The village itself offers a range of basic amenities including a primary school, garage, convenience store and church. Additional facilities are available in the locality, whilst more comprehensive amenities can be found in Oswestry approximately 7.2 miles, Shrewsbury approximately 16.4 miles or Welshpool approximately 8 miles. The locality enjoys a number of walks including Offa’s Dyke, whilst easy access can be gained to the countryside of mid Wales and the coastal areas.

**DESCRIPTION**  
This delightful and particularly desirable modern detached house benefits from contemporary accommodation and offers a traditional layout, being beautifully presented with a high specification and a tasteful scheme of decor. Set on a generous size plot with ample parking for 2/3 cars, key details and benefits include the following:

- \*Open Plan Kitchen/Dining Room
- \*Lounge, separate Study/Snug
- \*LP Gas Central Heating System
- \*Fibre Broadband available
- \*Spacious Driveway
- \*Detached Garage

AN INTERNAL INSPECTION IS HIGHLY RECOMMENDED TO APPRECIATE THE STANDARD OF ACCOMMODATION

**COVERED ENTRANCE PORCH**  
With part glazed entrance door leading into:

**RECEPTION HALL**  
With staircase leading to the First Floor Landing, understairs storage cupboard.

**LOUNGE**  
With uPVC double glazed window to the front elevation, radiator, fireplace recess with log burner, oak mantle and slate hearth.

**STUDY/SNUG**  
With uPVC double glazed window to the front elevation, radiator.

**KITCHEN/DINING ROOM**  
Comprising a comprehensive range of base and wall units providing an excellent range of cupboard storage and drawer space with granite worktops over and matching upstands. Fitted four ring induction hob and oven. Integrated fridge/freezer and dishwasher. One and a half bowl inset sink unit with mixer tap and cupboard under. Breakfast bar, uPVC double glazed window to the rear elevation, tiled floor.

**DINING AREA**  
French doors leading out onto the rear garden, tiled floor, radiator.

**UTILITY**  
With base units providing storage with granite worktops over and matching upstands, inset one and a half bowl sink unit, uPVC double glazed door and window to the rear elevation, tiled floor, wall mounted boiler.

**CLOAKROOM**  
Comprising a two piece suite providing a low level flush WC and wash hand basin. UPVC double glazed window to the side elevation, tiled floor, radiator.

**FIRST FLOOR LANDING**  
With access to fully insulated and boarded loft with integrated access ladder.

**BEDROOM 1**  
With uPVC double glazed window to the rear elevation, a comprehensive range of fitted wardrobes with mirror glazed doors, radiator.

**EN-SUITE**  
Comprising a three piece suite providing a low flush WC, wash hand basin and shower unit. UPVC double glazed window to the side elevation, heated towel rail.

**BEDROOM 2**  
With uPVC double glazed window to the front elevation, recessed wardrobe, radiator.

**BEDROOM 3**  
With uPVC double glazed window to the front elevation, radiator.

**BEDROOM 4**  
With uPVC double glazed window to the rear elevation, radiator.

**BATHROOM**  
Fitted three piece suite comprising low level flush WC, wash hand basin and bath with shower over and glazed screen. UPVC double glazed window to the rear elevation, heated towel rail.

**OUTSIDE**  
The front of the property is approached over a brick paved driveway which leads to the Garage. The front garden is laid to lawn for ease of maintenance with a matching brick paved path leading to the front door.

To the rear of the house is a paved patio providing an ideal outdoor entertainment space. The remainder of the garden is laid to lawn and enclosed by wooden fencing. There is a useful garden shed with mains power connected ideal for a number of uses.

**DETACHED GARAGE**  
With automatic operated door to front elevation, pedestrian door to the side, mains power and strip lighting.

**GENERAL REMARKS**  
The fitted carpets as laid. Only those items described in these particulars are included in the sale.

**SERVICES**  
Mains water, electricity and drainage are understood to be connected. Gas (LPG) central heating system. The ground and first floor of the property operate on separate heating thermostats so it is possible to to heat each floor at different temperatures.

**TENURE**  
Freehold. Purchasers must confirm via their solicitor.

**COUNCIL TAX**  
The property is currently banded in Council Tax Band E - Powys Council.

**VIEWINGS**  
Via the Agents, Halls, 20 Church Street, Oswestry, SY11 2SP - 01691 670320.