



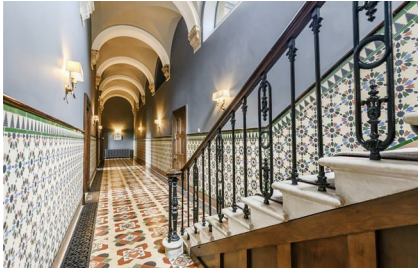
FOR SALE

Price Guide £800,000

Library House, Wynnstay Hall Estate, Ruabon, Wrexham, LL14 6LA

A unique and special country residence forming part of the impressive Grade II * listed 17th century Wynnstay Hall, whilst including formal gardens and a wonderful outlook onto open countryside and having access to extensive communal landscaped gardens and leisure facilities.





- **Stunning Period Grade II * Listed Home**
- **Imposing and Sumptuous Accommodation**
- **Host of Original Features**
- **Circa 7,000 Square Feet**
- **Indoor Heated Swimming Pool and Gym Suite**
- **Landscaped Gardens**
- **Unique Country Setting**

DIRECTIONS

From Oswestry proceed north along the A5, linking into the A483 Chester Road and take the left turning signed for Whitchurch and at the roundabout take the third exit, again for Whitchurch A539 and over the next roundabout. Proceed up to the T junction and turn right. Follow this road for about 0.3 mile and the entrance to Wynnstay Hall driveway will be seen on the right hand side, flanked by two stone lodges. Follow the driveway up to the Hall and bear right to its flank, where car parking space will be found. Viewers will be met at this point.

What3Words: neckline.quack.reactng

SITUATION

Approached along a magnificent tree lined avenue, the Wynnstay Hall Estate has many unique features, set in mixed parkland and listed gardens, which were originally designed in 1777 by Lancelot "Capability" Brown.

Located in the Dee Valley near Wrexham, the Wynnstay Hall Estate enjoys an elevated position above the River Dee with views of the vale of Llangollen and the Berwyn mountains. From the property itself, there are wonderful views to the south over the park and farmland beyond. This exclusive country location also provides easy access for commuters, north along the A483 to Wrexham and thereon to Chester (18 miles), or south to Oswestry (9 miles), where a good selection of general amenities will be found. There are road links thereafter to Shrewsbury (27 miles). More locally, Ruabon (1.5 miles) offers a basic selection of amenities and a railway station giving access to Shrewsbury / Birmingham or Chester. A good selection of schools, both state and private are available.

The property is well placed for access to a wide range of sporting and leisure facilities, including access to the North Wales coast and the Snowdonia National Park. There are racecourses at Chester and Bangor on Dee, with golf courses at Wrexham, Oswestry and Llanymynech.

DESCRIPTION

The Library forms a stunning home as part of the renowned Wynnstay Hall, formerly the principle residence of the Williams-Wynn family, one of the principle families in Welsh history.

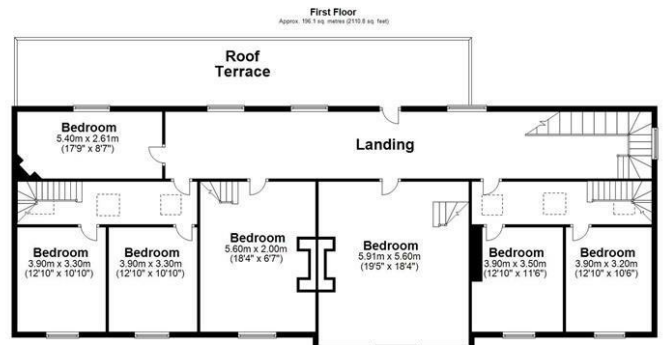
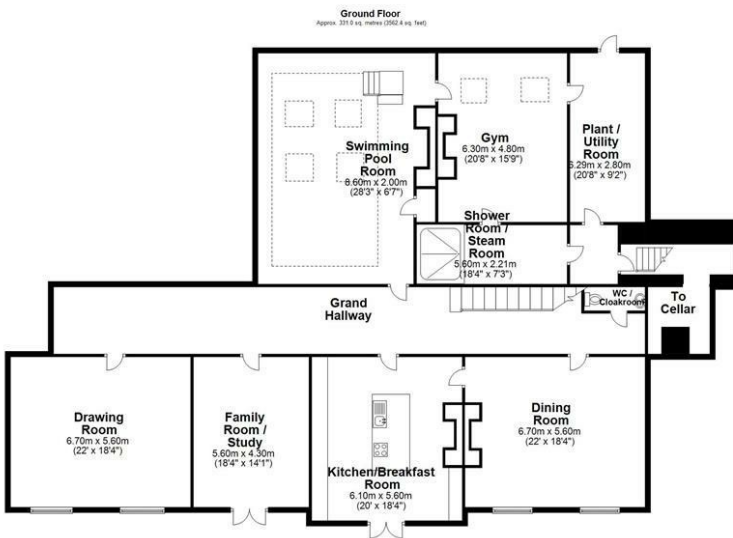
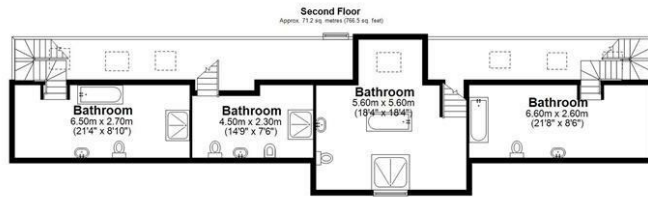
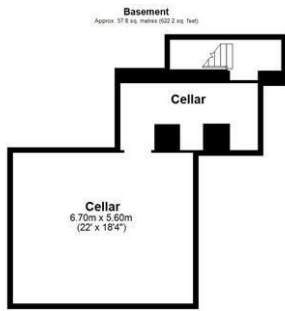
The Library has undergone a major renovation and refurbishment scheme since 2016, restoring many of the period features, whilst enhancing the fixtures and fittings in a luxury contemporary style. The accommodation boasts a breathless feel of both space and charm, streaming with natural light through its impressive tall windows. The accommodation portrays well its former glory, enjoying many vaulted ceilings, including the dining room, which is embellished with stunning colours. Other notable features include original fireplaces, cast iron radiators, the original turned cantilevered staircase, all of which is set off by the grand hallway with a Minton tiled floor and period wall tiles, together with carved ceiling archways. For the fitness and health minded, there is a beautiful 28 ft indoor heated swimming pool with original cast iron fireplace, next door is the gym with separate changing and steam room.

The main bedrooms have private staircases to the mezzanine ensembles, which include exposed roof beams and brickwork, tasteful wall tiling and traditional style contemporary fittings, including deep roll top bath tubs. The quality of fittings is evident to each ensuite.

Outside, the gardens have a south facing aspect, formally landscaped and enjoy a generous size patio, quite suitable for alfresco dining and late afternoon entertaining.

Additional features include:

- * Being part of an exclusive gated community.
- * New fitted complete kitchen, supplied by German company Shuller - 125 range, coloured glass fronts, quartz worktops, an array of quality appliances - part with wifi control. Phillips lighting system with mood functions.
- * Automated dialling control to the central heating (zoned) and swimming pool management systems.
- * Fibre superfast wifi installed.
- * Useful cellar storage and substantial plant / utility room.
- * Garden lighting with Hive control system (plug-in).
- * 3 car parking spaces.
- * Communal tennis courts, all-weather sports pitch, grounds with natural pond.



Total area: approx. 656.1 sq. metres (7061.9 sq. feet)
Library House

Indicative floor plans only - NOT TO SCALE - All floor plans are included only as a guide and should not be relied upon as a source of information for area, measurement or detail.



3 Reception
Room/s



7 Bedroom/s



4 Bath/Shower
Room/s



ACCOMMODATION

GRAND HALLWAY

With Minton tiled floor and part tiled walls, decorative domed ceiling with arches.

GUEST CLOAKROOM

With Minton tiled floor and part tiled walls, WC, wash stand with cast iron frame.

DRAWING ROOM

With period fireplace having decorative carvings, slate hearth and woodburning stove, low panelled walls, tall sash windows with shutters, decorative vaulted ceiling.

FAMILY ROOM / STUDY

With stunning period marble fireplace with open grate and slate hearth flanked by two tall arched recesses, vaulted ceiling, tall twin French doors and window shutters.

KITCHEN / BREAKFAST ROOM

Comprehensively re-fitted with a bespoke German Shuller 125 range, providing a quartz worktop and central breakfast island, extensive tall coloured glass fronted units, incorporating pull-out larder shelving. Selection of AEG quality appliances, including built in INDUCTION HOB unit with integrated EXTRACTOR, SELF-CLEANING OVEN, multi functional MICROWAVE OVEN, DISHWASHER - all Wifi enabled. Integrated COFFEE MAKER, two WARMING DRAWERS. Built in Frankie sink unit with BOILING WATER AND FILTER FUNCTIONS. A BREAKFAST ISLAND also incorporates an attractive raised composite wood effect breakfast bar, together with a selection of drawer units under. Phillips lighting system to part of the kitchen units, providing selective mood functions. Vaulted ceiling, twin French doors with window shutters leading out to the garden. Communicating door to:

DINING ROOM

With decorative high level ceiling, period marble fireplace with inset cast iron grate, two tall sash windows with window shutters providing views out to the garden.

LEISURE COMPLEX

With access off the grand hallway and comprising: 28 FT HEATED INDOOR SWIMMING POOL with lighting and insulation cover, internal and external steps with tiled walkway, original cast iron bread ovens and range cooker, vaulted ceiling with exposed truss. Access door to:

GYMNASIUM (EXCLUDES EQUIPMENT)

With six wall mirrors, rubberised flooring tiles, vaulted ceiling with exposed roof truss, glazed twin doors lead through to:

CHANGING AND SHOWER / STEAM ROOMS

With tiled floor, wall mirror, glazed door to tiled shower / steam room.



PLANT / UTILITY ROOM

With access off the gymnasium, incorporating two gas fired central heating boilers. One of which serves the central heating radiator system to the main accommodation and the second boiler is connected to a Recotherm Innovative Ventilation Technology Unit (ducting system), which serves the leisure area heating system. Modern hot water tank, swimming pool filtration unit, plumbing for a washing machine. SMALL STORE room off.

FROM THE GRAND HALLWAY a beautiful stone and ornamental iron cantilevered staircase rises to:

FIRST FLOOR LANDING

With Minton tiled floor, cornice ceiling with downlighters and four large windows providing excellent natural light. Doors leading off to all the bedrooms suites, as follows:

DORM SUITE 1

ENTRANCE LOBBY. BEDROOM (1) with high cornice ceiling.

SITTING ROOM / BEDROOM (2) with high cornice ceiling.

MEZZANINE BATHROOM with contemporary period style suite with roll top twin ended bath tub having centre mixer tap with ceiling hung shower frame and curtain, low flush WC, period style wash stand, part tiled walls.

MASTER SUITE 1

BEDROOM (3) with high cornice ceiling, period marble fireplace surround with inset cast iron grate, staircase rising to:

MEZZANINE BATH / SHOWER ROOM with stunning vaulted ceiling and exposed roof trusses. Period style roll top twin ended bath tub with mixer tap and shower attachment, low flush WC, glazed shower cubicle with tiled wall and direct feed shower unit with rain head, further part tiled walls.

MASTER SUITE 2

BEDROOM (4) with high cornice ceiling, staircase rising to:

MEZZANINE SHOWER ROOM with glazed shower cubicle with tiled wall and direct feed shower unit having rain head and handheld attachment, further part tiled walls, period style wash stand, low flush WC.

DORM SUITE 2

ENTRANCE LOBBY. BEDROOM (5) with cornice ceiling.

BEDROOM / SITTING ROOM (6) With cornice ceiling. From the entrance lobby a staircase rises to:

MEZZANINE BATH / SHOWER ROOM with period style roll top twin ended bath tub with centre mixer tap, glazed shower cubicle with tiled wall and direct feed shower unit having rain head and handheld attachment, further part tiled walls, low flush WC, period style wash stand.



BEDROOM (7) / STUDY

With marble surround fireplace with inset cash iron fireplace, high level cornice ceiling.

OUTSIDE

The property is approached over a long shared tree lined avenue driveway. This leads to a communal car park which provides TWO PRIVATE CAR PARKING SPACES. There is a separate gated courtyard with an ADDITIONAL PARKING SPACE.

THE GARDENS

These are formally landscaped, providing a central generous size lawn with a south facing aspect and bounded by well stocked specimen shrubbery beds, privet and specimen conifers. The lawn is partly inset with matching shaped mixed shrubbery beds. Gravelled pathways extend down both flanks of the garden, with a further small lawn incorporating five specimen shrubs. At the bottom corner of the garden is a CIRCULAR PAVED SEATING area offering wonderful views. Immediate adjacent to the frontage of the house is an extensive Indian stone FLAGGED PATIO / ALFRESCO DINING PATIO. External cold water tap connected to IRRIGATION SYSTEM and AUTOMATED GARDEN LIGHTING.

FIXTURES AND FITTINGS

The fitted carpets as laid, curtains and light fittings are included in the sale. Only those items described in these particulars are included in the sale.

SERVICES

Mains electricity and gas are understood to be connected. Private water supply - to be verified. Shared private foul drainage system. None of these services have been tested.

TENURE

Leasehold - Length of lease 999 years. Commencement date 2016. Service / management charge £155.56 per calendar month. Purchasers must confirm via their solicitor.

COUNCIL TAX

The property is currently showing as Council Tax Band "I". Please confirm the council tax details via Wrexham County Borough Council on 01978 298993 or visit www.wrexham.gov.uk.

FOR SALE

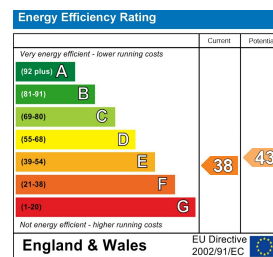
Library House, Wynnstay Hall Estate, Ruabon, Wrexham, LL14 6LA



Property to sell? We would be delighted to provide you with a free no obligation market assessment of your existing property. Please contact your local Halls office to make an appointment. **Mortgage/ financial advice.** We are able to recommend a completely independent financial advisor,

who is authorised and regulated by the FCA. Details can be provided upon request. **Do you require a surveyor?** We are able to recommend a completely independent chartered surveyor. Details can be provided upon request.

Energy Performance Rating



01691 670 320

Oswestry Sales
20 Church Street, Oswestry, SY11 2SP
E: oswestry@hallsgb.com



IMPORTANT NOTICE. Halls Holdings Ltd and any joint agents for themselves, and for the Vendor of the property whose Agents they are, give notice that: (i) These particulars are produced in good faith, are set out as a general guide only and do not constitute any part of a contract (ii) No person in the employment of or any agent of or consultant to Halls Holdings has any authority to make or give any representation or warranty whatsoever in relation to this property (iii) Measurements, areas and distances are approximate, Floor plans and photographs are for guidance purposes only (photographs are taken with a wide angled / zoom lenses) and dimensions shapes and precise locations may differ (iv) It must not be assumed that the property has all the required planning or building regulation consents. Halls Holdings, Bowmen Way, Shrewsbury, Shropshire SY4 3DR. Registered in England 06597073.