

Cromwell Fields

Local Information



LARKFLEET
HOMES

Cromwell Fields

Local Information



Welcome to Cromwell Fields, Bury

Larkfleet's latest development is situated in the heart of Bury, a picturesque village on the outskirts of the market town of Ramsey. Surrounded by beautiful Huntingdonshire countryside, the 1, 3 & 4 bedroom homes available at Cromwell Fields are perfect for buyers looking to strike that just right work-life balance. Well placed for access to major cities and towns like London, Cambridge, Peterborough, Huntingdon, Corby and Kettering, Bury is the ideal location for homeowners looking to experience life in the country without surrendering an easy commute.

Nestled on the border of Cambridgeshire and Huntingdonshire, Bury has all the charm you would expect from a small village, alongside everyday shops and services including a convenience store for essentials. The neighbouring market town of Ramsey provides more retail, dining and entertainment options. Independent shops and businesses include a butchers, greengrocers, florist and a gym. Ramsay is also home to a selection of supermarkets and larger stores, as well as a popular farm shop complete with onsite café and restaurant.

There are several excellent schools in the area including The Ashbeach Primary School, Ramsey Junior School and Abbey College. There are also two well regarded independent schools nearby catering for children from 6 months to 18 years of age.



A great place to live



Weekends are made for exploring and Ramsey has an abundance of heritage attractions as well as countryside, waterway and woodland trails.

There is also ample opportunity to develop or pick up new hobbies or interests as there are so many local community groups covering everything from yoga to crafting and floristry to bell ringing.

A new home at Cromwell Fields offers the quintessential rural village lifestyle. However, Huntingdon railway station is just 7 miles away and provides easy access to London Kings Cross. Peterborough is also in easy reach and provides convenient transport links to other towns and cities.

Cromwell Fields features at a glance

- 92 new homes
- Choice of 12 home styles
- 1, 3, & 4 bedroom homes
- Great commuter location
- Close to Peterborough and Cambridge
- Great amenities close by
- Exclusive Wifi package is available at Cromwell Fields from Virgin Media



Cromwell Fields

Development Plan



Every care has been taken to ensure the accuracy of these particulars, but the contents shall not form part of any contract and the vendors reserve the right to alter specification and/or design without notice. The site plan is drawn to show the relative position of individual properties. NOT TO SCALE. This is a two dimensional drawing and will not show land contours and gradients, boundary treatments or local authority street lighting. Landscaping shown is for illustration purposes only and is subject to change. Footpaths subject to change. Purchasers are advised to check with our Sales Advisors on the plot of their choice. The site details and individual house types may be subject to planning variation. The landscaping shown on the computer-generated illustrations of the development is for illustrative purposes only. The elevational treatments shown are for illustrative purposes only and can vary depending on the property and location. Please check with the development Sales Advisor for further information on the specific materials for your chosen property.



THE KNIGHTON



1 bedroom



1 bathroom



Parking space

Open-plan kitchen/living area

Downstairs cloakroom

Master bedroom with bathroom

Allocated parking space

Homes for every generation



LARKFLEET
HOMES

THE KNIGHTON



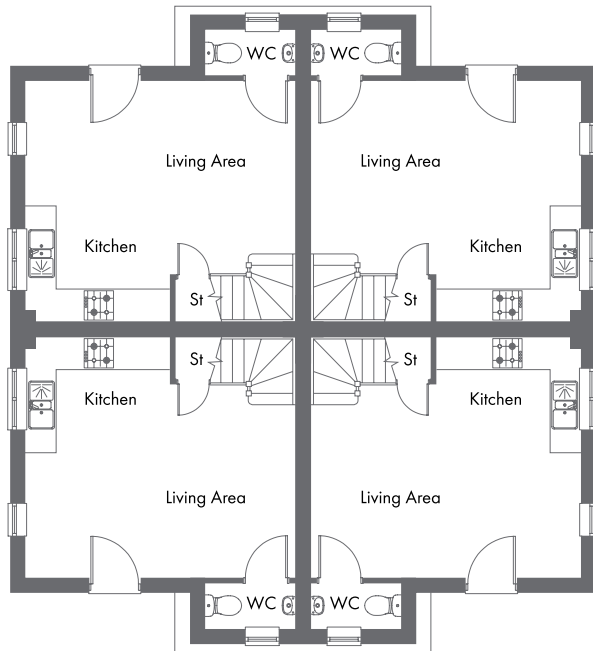
1 bedroom



1 bathroom



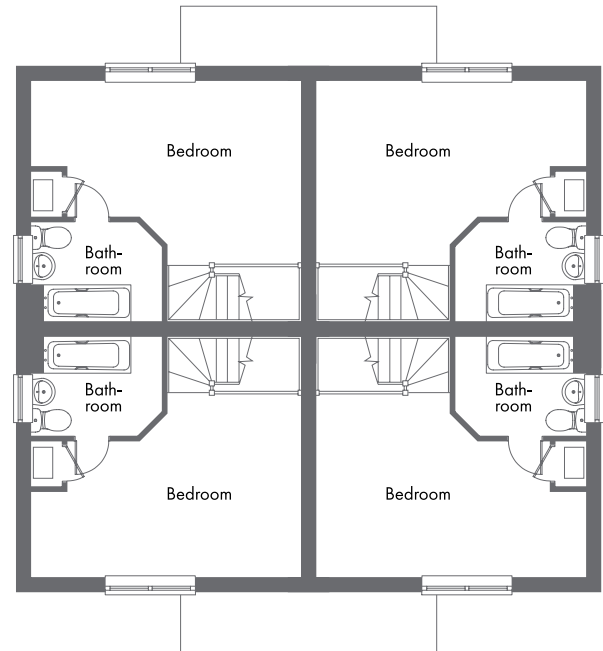
Parking space



Ground Floor

Kitchen/Living Area

5.27m x 4.67m 17'3" x 15'3"



First Floor

Master Bedroom (excl. stairs & incl. bathroom)

5.27m x 3.57m 17'3" x 11'7"

Bathroom

2.58m x 1.93m 8'5" x 6'3"

**CONSUMER
CODE FOR
HOME BUILDERS**

www.consumercode.co.uk



Please note: All measurements shown are approximate maximum room dimensions and are + or - 50mm. They are not intended to be used for carpet sizes, appliance sizes or items of furniture. Floorplans depict a typical layout of this type. Please refer to the development brochure for confirmation of the plot numbers for this particular house type. Depending on plot number, the floor plans for this house type may be opposite to those shown above. Windows and other elevational treatments are subject to change and may differ at each development, please confirm details with your Sales Advisor. For further information on the specific materials for your chosen property, exact plot specification, details of external and internal finishes, dimensions, floorplans and full site-specific details, please speak with your Sales Advisor. Landscaping shown is for illustration purposes only. Every care has been taken to ensure the accuracy of these particulars, but the contents shall not form part of any contract and the vendors reserve the right to alter the specification and/or design without notice.

2111 (559 sq ft) CF0321

Homes for every generation



LARKFLEET
HOMES



THE WINDSOR



3 bedrooms



2 bathrooms/
en-suites



Parking spaces

Front aspect living room

Kitchen/dining area with French Doors to rear

Master bedroom with en-suite and fitted wardrobe

Two further bedrooms and family bathroom

Allocated parking spaces

Homes for every generation



LARKFLEET
HOMES

THE WINDSOR



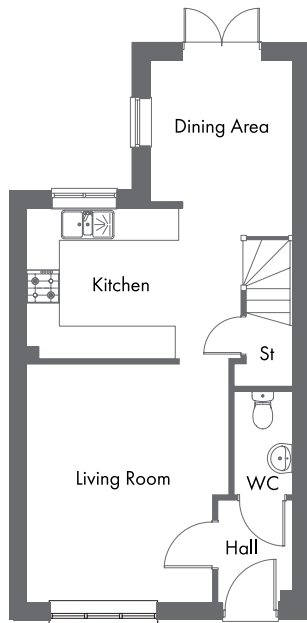
3 bedrooms



2 bathrooms/
en-suites

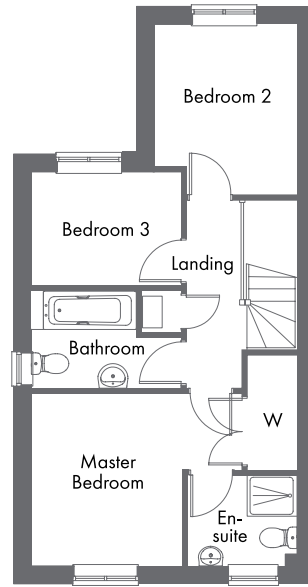


Parking spaces



Ground Floor

Living Room	4.33m x 3.70m	14'2" x 12'2"
Kitchen	2.85m x 2.78m	10'0" x 9'5"
Dining Area	2.62m x 2.61m	8'6" x 8'6"



First Floor

Master Bedroom (excl. wardrobe)	3.85m x 3.15m	12'8" x 10'4"
En-suite	2.00m x 1.67m	6'7" x 5'5"
Bedroom 2	2.62m x 2.61m	8'7" x 8'7"
Bedroom 3	2.73m x 2.10m	8'10" x 6'9"
Bathroom	2.76m x 1.78m	9'1" x 5'8"

**CONSUMER
CODE FOR
HOME BUILDERS**

www.consumercode.co.uk



Please note: All measurements shown are approximate maximum room dimensions and are + or - 50mm. They are not intended to be used for carpet sizes, appliance sizes or items of furniture. Floorplans depict a typical layout of this type. Please refer to the development brochure for confirmation of the plot numbers for this particular house type. Depending on plot number, the floor plans for this house type may be opposite to those shown above. Windows and other elevational treatments are subject to change and may differ at each development, please confirm details with your Sales Advisor. For further information on the specific materials for your chosen property, exact plot specification, details of external and internal finishes, dimensions, floorplans and full site-specific details, please speak with your Sales Advisor. Landscaping shown is for illustration purposes only. Every care has been taken to ensure the accuracy of these particulars, but the contents shall not form part of any contract and the vendors reserve the right to alter the specification and/or design without notice.

2308 (918 sq ft) CF0321

Homes for every generation



LARKFLEET
HOMES



THE LUDLOW



3 bedrooms



2 bathrooms/
en-suites



Parking spaces

Living room with French Doors to rear

Open-plan kitchen/dining area

Master bedroom with en-suite and fitted wardrobe

Two further bedrooms and family bathroom

Allocated parking spaces

Homes for every generation



LARKFLEET
HOMES

THE LUDLOW



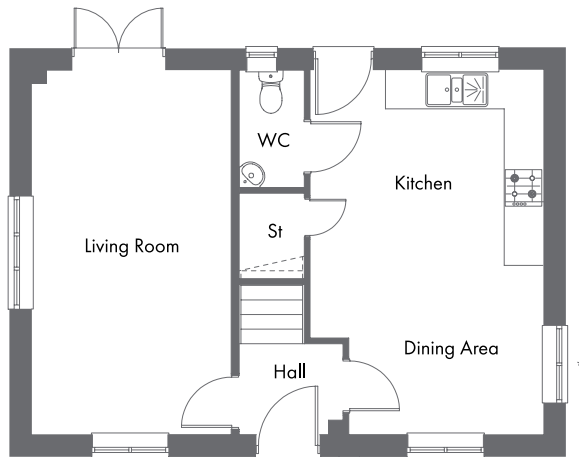
3 bedrooms



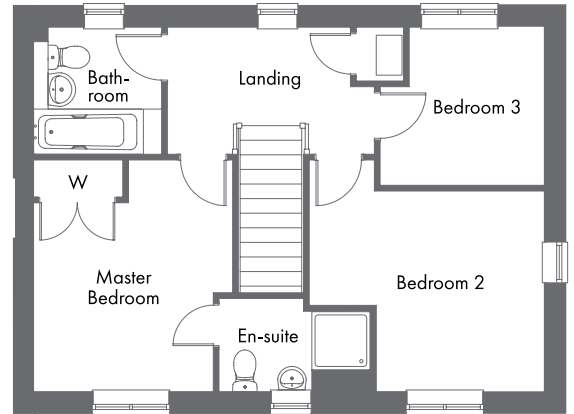
2 bathrooms/
en-suites



Parking spaces



* Windows to specific plots only



Ground Floor

Living Room

5.64m x 3.04m 18'6" x 10'0"

Kitchen/Dining Area

5.63m x 3.60m 18'6" x 11'10"

First Floor

Master Bedroom (incl. wardrobe)

3.57m x 3.10m 11'9" x 10'2"

En-suite

2.35m x 1.43m 7'7" x 4'7"

Bedroom 2 (excl. door recess)

3.09m x 2.55m 10'2" x 8'4"

Bedroom 3

2.50m x 2.43m 8'2" x 8'0"

Bathroom

1.99m x 1.96m 6'5" x 6'4"

**CONSUMER
CODE FOR
HOME BUILDERS**

www.consumercode.co.uk



Please note: All measurements shown are approximate maximum room dimensions and are + or - 50mm. They are not intended to be used for carpet sizes, appliance sizes or items of furniture. Floorplans depict a typical layout of this type. Please refer to the development brochure for confirmation of the plot numbers for this particular house type. Depending on plot number, the floor plans for this house type may be opposite to those shown above. Windows and other elevational treatments are subject to change and may differ at each development, please confirm details with your Sales Advisor. For further information on the specific materials for your chosen property, exact plot specification, details of external and internal finishes, dimensions, floorplans and full site-specific details, please speak with your Sales Advisor. Landscaping shown is for illustration purposes only. Every care has been taken to ensure the accuracy of these particulars, but the contents shall not form part of any contract and the vendors reserve the right to alter the specification and/or design without notice.

2318 (971 sq ft) CF0321

Homes for every generation



LARKFLEET
HOMES



THE NOTTINGHAM



3 bedrooms



2 bathrooms/
en-suites



Parking spaces

Dual aspect living room

Kitchen/dining area with French Doors

Master bedroom with en-suite and fitted wardrobe

Two further bedrooms and family bathroom

Allocated parking spaces

Homes for every generation



LARKFLEET
HOMES

THE NOTTINGHAM



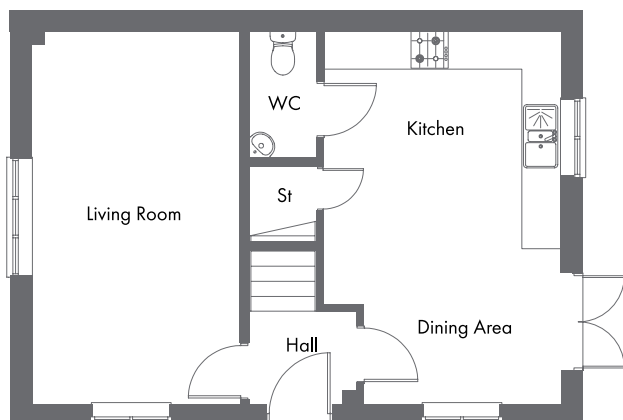
3 bedrooms



2 bathrooms/
en-suites



Parking spaces



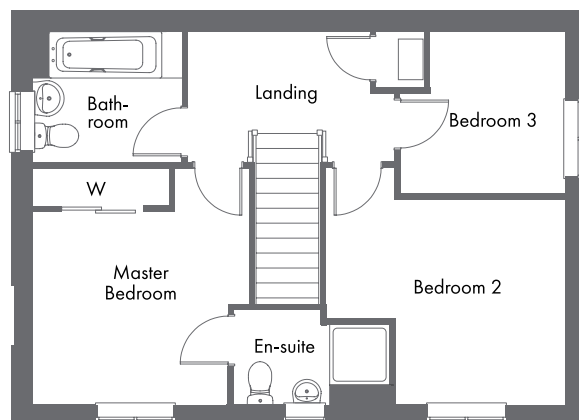
Ground Floor

Living Room

5.64m x 3.15m 18'6" x 10'4"

Kitchen/Dining Area

5.64m x 3.58m 18'6" x 11'9"



First Floor

Master Bedroom (incl. wardrobe)

3.57m x 3.20m 11'9" x 10'6"

En-suite

2.33m x 1.43m 7'8" x 4'8"

Bedroom 2

3.59m x 3.09m 11'9" x 10'2"

Bedroom 3

2.49m x 2.43m 8'2" x 8'0"

Bathroom

2.19m x 1.95m 7'2" x 6'5"

**CONSUMER
CODE FOR
HOME BUILDERS**

www.consumercode.co.uk



Please note: All measurements shown are approximate maximum room dimensions and are + or - 50mm. They are not intended to be used for carpet sizes, appliance sizes or items of furniture. Floorplans depict a typical layout of this type. Please refer to the development brochure for confirmation of the plot numbers for this particular house type. Depending on plot number, the floor plans for this house type may be opposite to those shown above. Windows and other elevational treatments are subject to change and may differ at each development, please confirm details with your Sales Advisor. For further information on the specific materials for your chosen property, exact plot specification, details of external and internal finishes, dimensions, floorplans and full site-specific details, please speak with your Sales Advisor. Landscaping shown is for illustration purposes only. Every care has been taken to ensure the accuracy of these particulars, but the contents shall not form part of any contract and the vendors reserve the right to alter the specification and/or design without notice.

2324 (981 sq ft) CF0321

Homes for every generation



LARKFLEET
HOMES



THE ASHTON



3 bedrooms



1 bathroom



Parking spaces

Living/dining area with French Doors to rear

Separate kitchen

Front aspect master bedroom

Two further bedrooms and family bathroom

Allocated parking spaces

Homes for every generation



LARKFLEET
HOMES

THE ASHTON



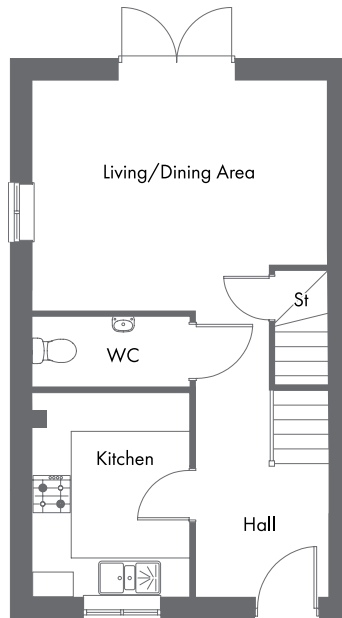
3 bedrooms



1 bathroom



Parking spaces



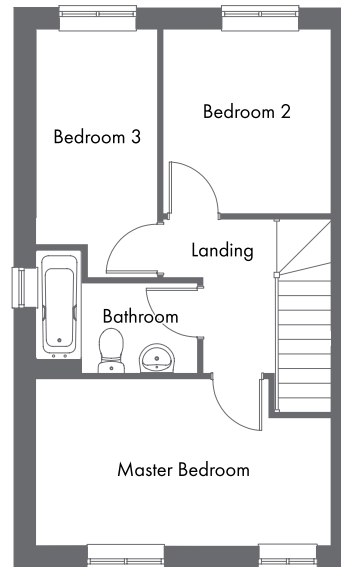
Ground Floor

Living/Dining Area

4.58m x 3.58m 15'0" x 11'8"

Kitchen

3.16m x 2.44m 10'4" x 8'0"



First Floor

Master Bedroom

4.57m x 2.57m 14'10" x 8'4"

Bedroom 2

2.87m x 2.62m 9'4" x 8'6"

Bedroom 3

3.34m x 1.86m 10'10" x 6'1"

Bathroom

2.47m x 1.38m 8'1" x 4'5"

**CONSUMER
CODE FOR
HOME BUILDERS**

www.consumercode.co.uk



Please note: All measurements shown are approximate maximum room dimensions and are + or - 50mm. They are not intended to be used for carpet sizes, appliance sizes or items of furniture. Floorplans depict a typical layout of this type. Please refer to the development brochure for confirmation of the plot numbers for this particular house type. Depending on plot number, the floor plans for this house type may be opposite to those shown above. Windows and other elevational treatments are subject to change and may differ at each development, please confirm details with your Sales Advisor. For further information on the specific materials for your chosen property, exact plot specification, details of external and internal finishes, dimensions, floorplans and full site-specific details, please speak with your Sales Advisor. Landscaping shown is for illustration purposes only. Every care has been taken to ensure the accuracy of these particulars, but the contents shall not form part of any contract and the vendors reserve the right to alter the specification and/or design without notice.

2328 (801 sq ft) CF0321

Homes for every generation



LARKFLEET
HOMES



THE CHESTER



3 bedrooms



2 bathrooms/
en-suites



Parking spaces

Living/dining area with French Doors to rear

Front aspect kitchen

Master bedroom with en-suite and fitted wardrobe

Two further bedrooms and family bathroom

Allocated parking spaces

Homes for every generation



LARKFLEET
HOMES

THE CHESTER



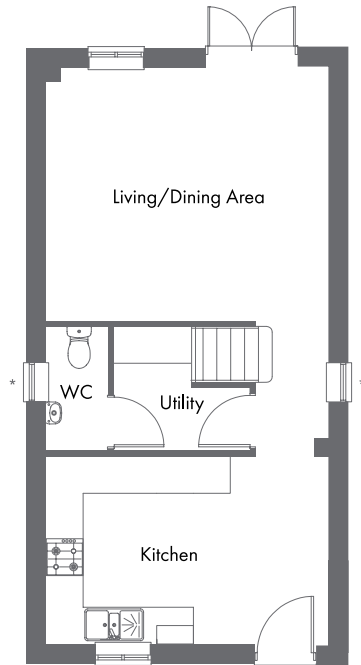
3 bedrooms



2 bathrooms/
en-suites



Parking spaces



* Windows to specific plots only

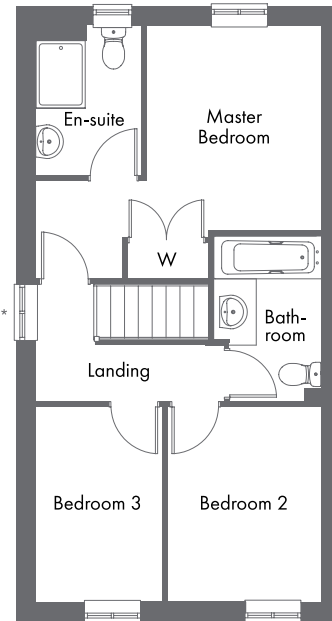
Ground Floor

Living/Dining Area

4.61m x 4.11m 15'1" x 13'6"

Kitchen

4.61m x 3.10m 15'1" x 10'2"



First Floor

Master Bedroom (excl. wardrobe & door rebate)

3.32m x 2.77m 10'11" x 9'1"

En-suite

2.33m x 1.43m 7'8" x 4'8"

Bedroom 2

3.16m x 2.43m 10'4" x 8'0"

Bedroom 3

3.16m x 2.03m 10'4" x 6'8"

Bathroom

2.70m x 1.70m 8'9" x 5'5"

**CONSUMER
CODE FOR
HOME BUILDERS**

www.consumercode.co.uk



Please note: All measurements shown are approximate maximum room dimensions and are + or - 50mm. They are not intended to be used for carpet sizes, appliance sizes or items of furniture. Floorplans depict a typical layout of this type. Please refer to the development brochure for confirmation of the plot numbers for this particular house type. Depending on plot number, the floor plans for this house type may be opposite to those shown above. Windows and other elevational treatments are subject to change and may differ at each development, please confirm details with your Sales Advisor. For further information on the specific materials for your chosen property, exact plot specification, details of external and internal finishes, dimensions, floorplans and full site-specific details, please speak with your Sales Advisor. Landscaping shown is for illustration purposes only. Every care has been taken to ensure the accuracy of these particulars, but the contents shall not form part of any contract and the vendors reserve the right to alter the specification and/or design without notice.

2329 (934 sq ft) CF0321

Homes for every generation



LARKFLEET
HOMES



THE OAKLAWN



4 bedrooms



2 bathrooms/
en-suites



Single/double garage
Parking spaces

Living room with French Doors to rear

Open-plan kitchen/dining/family area with French Doors

Master bedroom with en-suite and fitted wardrobes

Three further bedrooms and family bathroom

Single/double garage and allocated parking spaces

Homes for every generation



LARKFLEET
HOMES

THE OAKLAWN



4 bedrooms



2 bathrooms/
en-suites



Single/double garage
Parking spaces



Ground Floor

Living Room	5.75m x 3.51m	18'10" x 11'6"
Kitchen	4.80m x 3.27m	15'8" x 10'9"
Family Area	3.42m x 2.60m	11'2" x 8'5"
Dining Area	3.27m x 2.95m	10'7" x 9'7"
Utility	2.26m x 2.02m	7'5" x 6'8"



First Floor

Master Bedroom (incl. wardrobe)	5.05m x 3.27m	16'7" x 10'9"
En-suite	2.33m x 1.43m	7'8" x 4'8"
Bedroom 2	3.73m x 3.45m	12'3" x 11'4"
Bedroom 3 (excl. wardrobe)	3.45m x 3.05m	11'4" x 10'0"
Bedroom 4	3.45m x 1.91m	11'4" x 6'3"
Bathroom	3.23m x 2.73m	10'7" x 8'11"

**CONSUMER
CODE FOR
HOME BUILDERS**

www.consumercode.co.uk



Please note: All measurements shown are approximate maximum room dimensions and are + or - 50mm. They are not intended to be used for carpet sizes, appliance sizes or items of furniture. Floorplans depict a typical layout of this type. Please refer to the development brochure for confirmation of the plot numbers for this particular house type. Depending on plot number, the floor plans for this house type may be opposite to those shown above. Windows and other elevational treatments are subject to change and may differ at each development, please confirm details with your Sales Advisor. For further information on the specific materials for your chosen property, exact plot specification, details of external and internal finishes, dimensions, floorplans and full site-specific details, please speak with your Sales Advisor. Landscaping shown is for illustration purposes only. Every care has been taken to ensure the accuracy of these particulars, but the contents shall not form part of any contract and the vendors reserve the right to alter the specification and/or design without notice.

2404 (1596 sq ft) CF0321

Homes for every generation



LARKFLEET
HOMES



THE EPSOM



4 bedrooms



2 bathrooms/
en-suites



Single garage
Parking spaces

Front aspect living room

Kitchen/dining/family area with French Doors

Study area

Master bedroom with en-suite and wardrobe

Three further bedrooms and family bathroom

Single garage and allocated parking spaces

Homes for every generation



LARKFLEET
HOMES

THE EPSOM



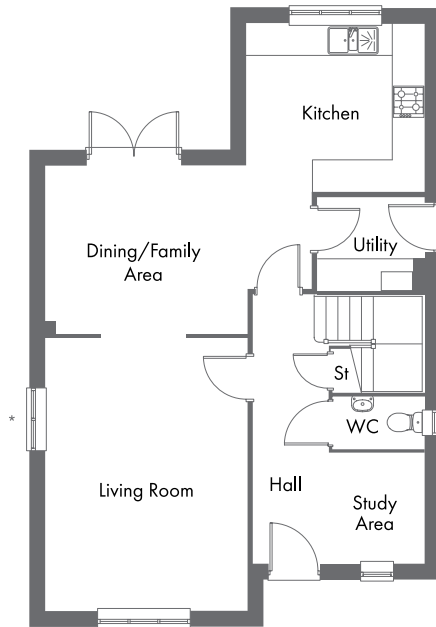
4 bedrooms



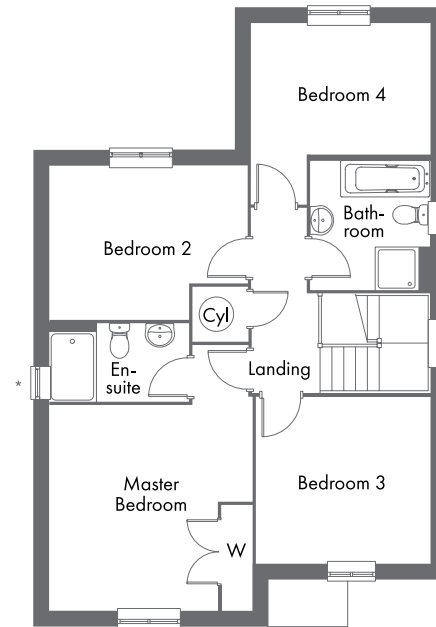
2 bathrooms/
en-suites



Single garage
Parking spaces



* Windows to specific plots only



Ground Floor

Living Room

4.97m x 3.75m 16'4" x 12'4"

Dining/Family Area

3.81m x 3.18m 12'4" x 10'5"

Kitchen

3.38m x 3.36m 11'1" x 11'0"

Utility

2.00m x 1.74m 6'7" x 5'9"

Study Area

1.87m x 1.82m 6'2" x 5'11"

First Floor

Master Bedroom (incl. wardrobe & excl. door recess)

3.75m x 3.68m 12'4" x 12'1"

En-suite†

2.33m x 1.43m 7'8" x 4'8"

Bedroom 2

3.75m x 2.90m 12'4" x 9'6"

Bedroom 3

3.27m x 3.15m 10'7" x 10'3"

Bedroom 4 (excl. door recess)

3.39m x 2.48m 11'1" x 8'1"

Bathroom

2.45m x 2.25m 8'0" x 7'5"

† En-suite layout differs depending on plot, please consult your sales advisor for more details

**CONSUMER
CODE FOR
HOME BUILDERS**

www.consumercode.co.uk



Please note: All measurements shown are approximate maximum room dimensions and are + or - 50mm. They are not intended to be used for carpet sizes, appliance sizes or items of furniture. Floorplans depict a typical layout of this type. Please refer to the development brochure for confirmation of the plot numbers for this particular house type. Depending on plot number, the floor plans for this house type may be opposite to those shown above. Windows and other elevational treatments are subject to change and may differ at each development, please confirm details with your Sales Advisor. For further information on the specific materials for your chosen property, exact plot specification, details of external and internal finishes, dimensions, floorplans and full site-specific details, please speak with your Sales Advisor. Landscaping shown is for illustration purposes only. Every care has been taken to ensure the accuracy of these particulars, but the contents shall not form part of any contract and the vendors reserve the right to alter the specification and/or design without notice.

2409 (1436 sq ft) CF0321

Homes for every generation



LARKFLEET
HOMES



THE LINGFIELD



4 bedrooms



2 bathrooms/
en-suites



Single garage
Parking spaces

Living room with French Doors to rear

Kitchen/dining area with utility

Master bedroom with en-suite and fitted wardrobe

Three further bedrooms and family bathroom

Integral garage and allocated parking spaces

Homes for every generation



LARKFLEET
HOMES

THE LINGFIELD



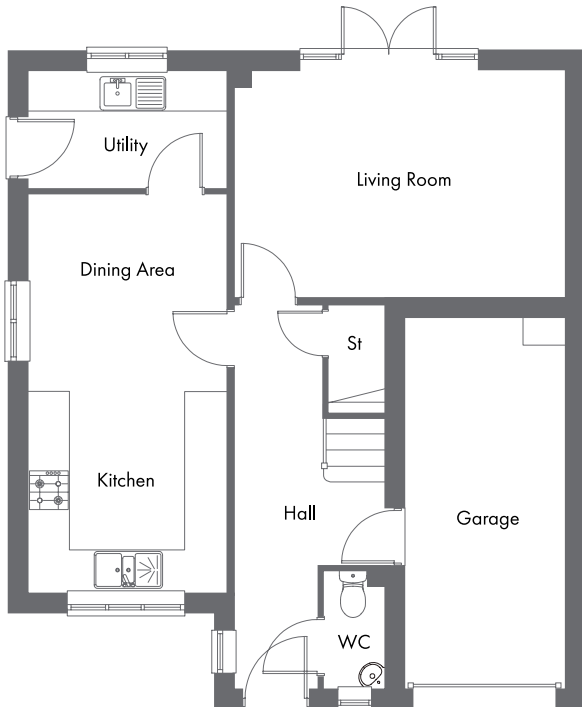
4 bedrooms



2 bathrooms/
en-suites



Single garage
Parking spaces



Ground Floor

Living Room

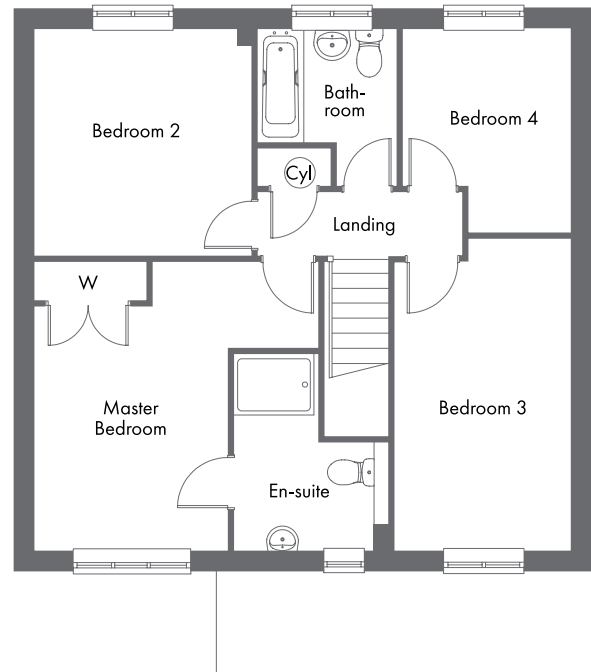
4.97m x 3.41m 16'3" x 11'2"

Kitchen/Dining Area

6.03m x 2.99m 19'8" x 9'8"

Utility

2.99m x 1.77m 9'8" x 5'8"



First Floor

Master Bedroom

4.37m x 2.94m 14'3" x 9'7"

En-suite (incl. shower unit)

2.96m x 2.34m 9'7" x 7'7"

Bedroom 2

3.43m x 3.31m 11'3" x 10'9"

Bedroom 3

4.71m x 2.64m 15'5" x 8'7"

Bedroom 4

3.08m x 2.53m 10'1" x 8'3"

Bathroom (excl. door recess)

2.09m x 1.71m 6'9" x 5'6"

**CONSUMER
CODE FOR
HOME BUILDERS**

www.consumercode.co.uk



Please note: All measurements shown are approximate maximum room dimensions and are + or - 50mm. They are not intended to be used for carpet sizes, appliance sizes or items of furniture. Floorplans depict a typical layout of this type. Please refer to the development brochure for confirmation of the plot numbers for this particular house type. Depending on plot number, the floor plans for this house type may be opposite to those shown above. Windows and other elevational treatments are subject to change and may differ at each development, please confirm details with your Sales Advisor. For further information on the specific materials for your chosen property, exact plot specification, details of external and internal finishes, dimensions, floorplans and full site-specific details, please speak with your Sales Advisor. Landscaping shown is for illustration purposes only. Every care has been taken to ensure the accuracy of these particulars, but the contents shall not form part of any contract and the vendors reserve the right to alter the specification and/or design without notice.

2432 (1229 sq ft) CF0321

Homes for every generation



LARKFLEET
HOMES



THE REDCAR



4 bedrooms



2 bathrooms/
en-suites



Single garage
Parking spaces

Living room with bay window

Kitchen/dining area with French Doors

Study with bay window

Master bedroom with en-suite and fitted wardrobes

Three further bedrooms and family bathroom

Single garage and allocated parking spaces

Homes for every generation



LARKFLEET
HOMES

THE REDCAR



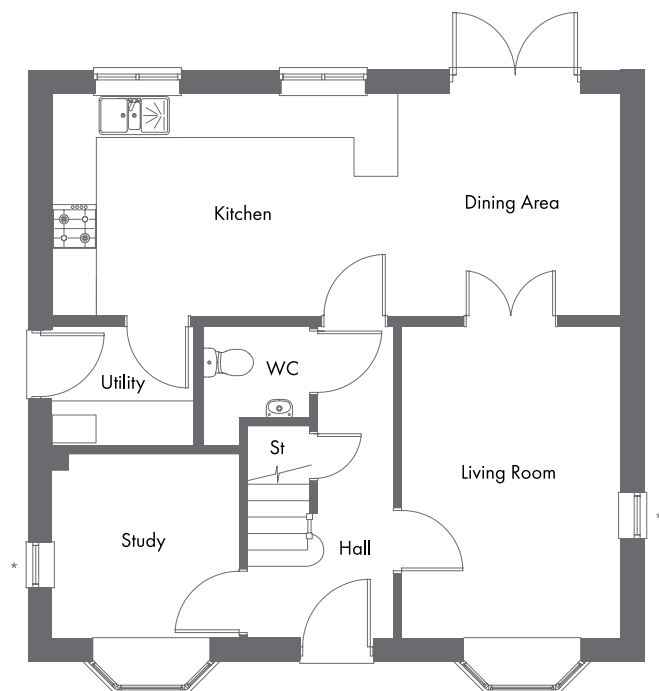
4 bedrooms



2 bathrooms/
en-suites



Single garage
Parking spaces



* Windows to specific plots only

Ground Floor

Living Room

4.25m x 3.00m 13'11" x 9'10"

Kitchen/Dining Area

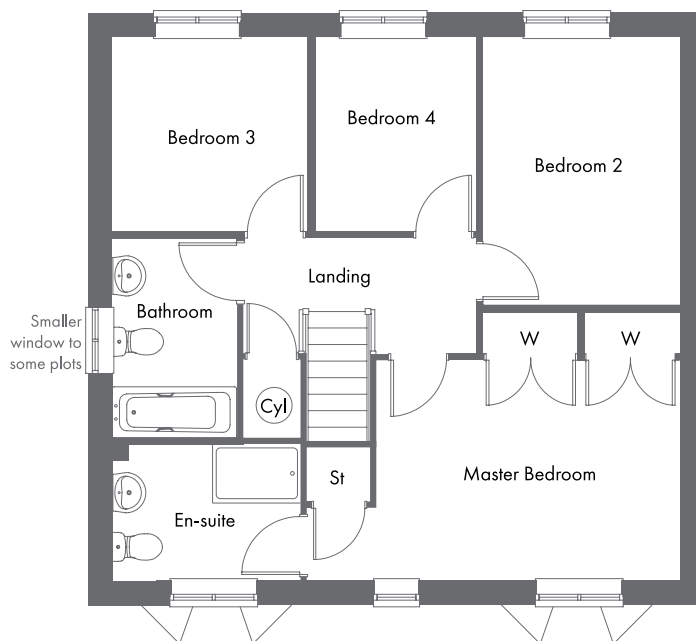
7.77m x 3.04m 25'6" x 10'0"

Study

2.55m x 2.51m 8'4" x 8'2"

Utility

1.95m x 1.63m 6'5" x 5'4"



First Floor

Master Bedroom (excl. wardrobes)

5.11m x 3.00m 16'9" x 9'10"

En-suite

2.33m x 1.43m 7'8" x 4'8"

Bedroom 2

3.66m x 2.69m 12'0" x 8'10"

Bedroom 3

2.68m x 2.65m 8'10" x 8'8"

Bedroom 4

2.65m x 2.18m 8'8" x 7'2"

Bathroom

2.71m x 1.70m 8'11" x 5'7"

**CONSUMER
CODE FOR
HOME BUILDERS**

www.consumercode.co.uk



Please note: All measurements shown are approximate maximum room dimensions and are + or - 50mm. They are not intended to be used for carpet sizes, appliance sizes or items of furniture. Floorplans depict a typical layout of this type. Please refer to the development brochure for confirmation of the plot numbers for this particular house type. Depending on plot number, the floor plans for this house type may be opposite to those shown above. Windows and other elevational treatments are subject to change and may differ at each development, please confirm details with your Sales Advisor. For further information on the specific materials for your chosen property, exact plot specification, details of external and internal finishes, dimensions, floorplans and full site-specific details, please speak with your Sales Advisor. Landscaping shown is for illustration purposes only. Every care has been taken to ensure the accuracy of these particulars, but the contents shall not form part of any contract and the vendors reserve the right to alter the specification and/or design without notice.

2433 (1260 sq ft) CF0321

Homes for every generation



LARKFLEET
HOMES



THE GALWAY



4 bedrooms



2 bathrooms/
en-suites



Single garage
Parking spaces

Triple aspect living room with French Doors to rear

Kitchen/dining area with French Doors

Utility

Master bedroom with en-suite and fitted wardrobes

Three further bedrooms and family bathroom

Single garage and allocated parking spaces

Homes for every generation



LARKFLEET
HOMES

THE GALWAY



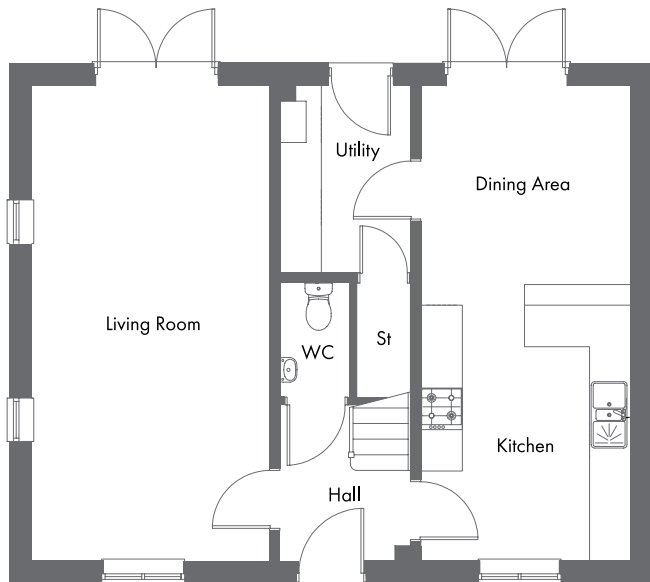
4 bedrooms



2 bathrooms/
en-suites



Single garage
Parking spaces



Ground Floor

Living Room

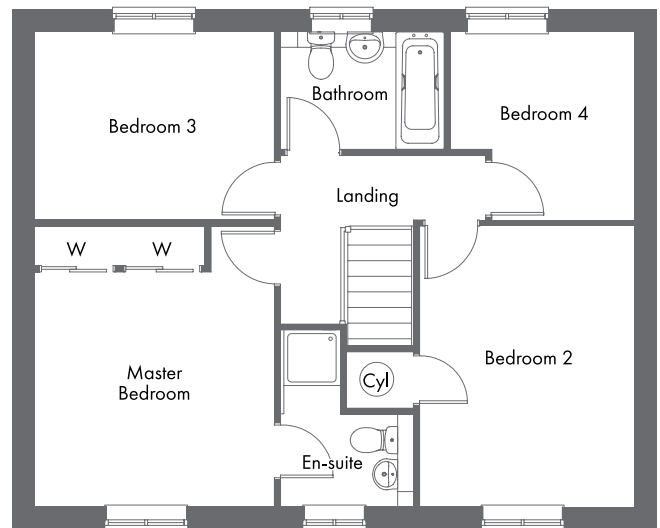
6.87m x 3.45m 22'5" x 11'3"

Kitchen/Dining Area

6.87m x 3.05m 22'5" x 10'0"

Utility

2.70m x 1.89m 8'9" x 6'2"



First Floor

Master Bedroom

4.07m x 3.47m 13'4" x 11'4"

En-suite (incl. shower recess)

2.55m x 1.90m 6'3" x 4'4"

Bedroom 2

4.06m x 3.09m 13'3" x 10'1"

Bedroom 3

3.47m x 2.72m 11'4" x 8'9"

Bedroom 4 (incl. door recess)

2.71m x 2.65m 8'9" x 8'7"

Bathroom

2.37m x 1.70m 7'8" x 5'6"

**CONSUMER
CODE FOR
HOME BUILDERS**

www.consumercode.co.uk



Please note: All measurements shown are approximate maximum room dimensions and are + or - 50mm. They are not intended to be used for carpet sizes, appliance sizes or items of furniture. Floorplans depict a typical layout of this type. Please refer to the development brochure for confirmation of the plot numbers for this particular house type. Depending on plot number, the floor plans for this house type may be opposite to those shown above. Windows and other elevational treatments are subject to change and may differ at each development, please confirm details with your Sales Advisor. For further information on the specific materials for your chosen property, exact plot specification, details of external and internal finishes, dimensions, floorplans and full site-specific details, please speak with your Sales Advisor. Landscaping shown is for illustration purposes only. Every care has been taken to ensure the accuracy of these particulars, but the contents shall not form part of any contract and the vendors reserve the right to alter the specification and/or design without notice.

2434 (1299 sq ft) CF0321

Homes for every generation



LARKFLEET
HOMES



THE PERTH



4 bedrooms



2 bathrooms/
en-suites



Single garage
Parking spaces

Front aspect living room with Juliet balcony

Open-plan kitchen/dining/utility

Master bedroom and shower room to first floor

Three further bedrooms and family bathroom to second floor

Single garage and allocated parking spaces

Homes for every generation



LARKFLEET
HOMES

THE PERTH



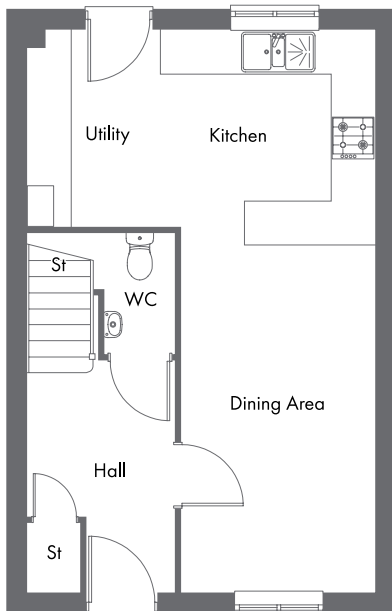
4 bedrooms



2 bathrooms/
en-suites

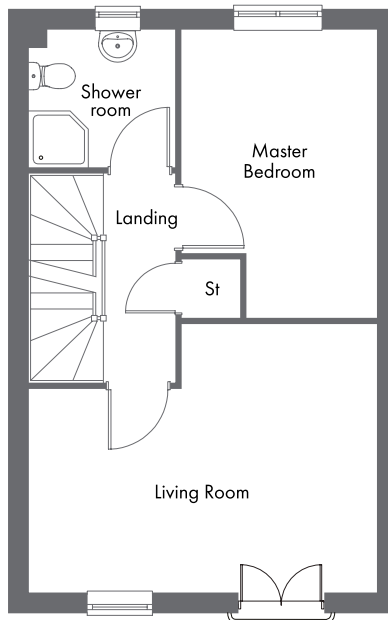


Single garage
Parking spaces



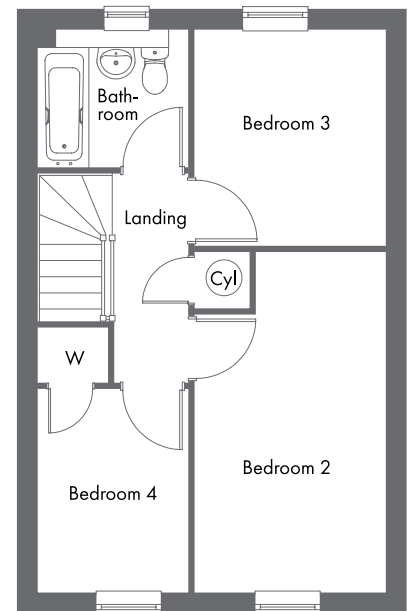
Ground Floor

Kitchen	
3.01m x 2.76m	9'9" x 9'1"
Dining Area	
5.12m x 2.72m	16'8" x 8'9"
Utility	
2.76m x 1.85m	9'1" x 6'1"



First Floor

Living Room	
4.86m x 3.76m	15'9" x 12'3"
Master Bedroom	
4.03m x 2.74m	13'2" x 8'10"
Shower Room	
2.02m x 1.91m	6'7" x 6'3"



Second Floor

Bedroom 2	
4.78m x 2.67m	15'7" x 8'8"
Bedroom 3	
3.02m x 2.68m	9'9" x 8'8"
Bedroom 4	
2.85m x 2.09m	9'4" x 6'9"
Bathroom	
2.09m x 1.91m	6'9" x 6'3"

**CONSUMER
CODE FOR
HOME BUILDERS**

www.consumercode.co.uk



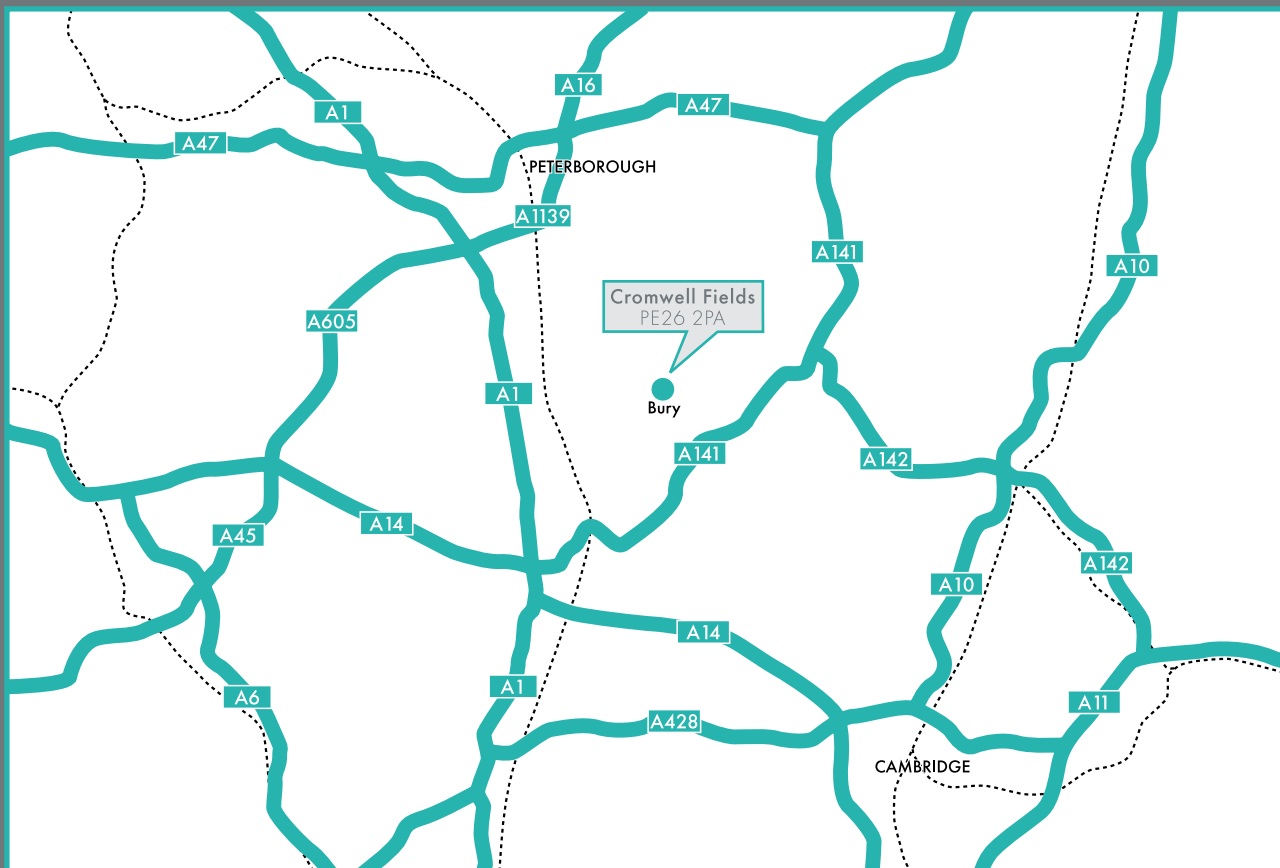
Please note: All measurements shown are approximate maximum room dimensions and are + or - 50mm. They are not intended to be used for carpet sizes, appliance sizes or items of furniture. Floorplans depict a typical layout of this type. Please refer to the development brochure for confirmation of the plot numbers for this particular house type. Depending on plot number, the floor plans for this house type may be opposite to those shown above. Windows and other elevational treatments are subject to change and may differ at each development, please confirm details with your Sales Advisor. For further information on the specific materials for your chosen property, exact plot specification, details of external and internal finishes, dimensions, floorplans and full site-specific details, please speak with your Sales Advisor. Landscaping shown is for illustration purposes only. Every care has been taken to ensure the accuracy of these particulars, but the contents shall not form part of any contract and the vendors reserve the right to alter the specification and/or design without notice.

3401 (1266 sq ft) CF0321

Homes for every generation



LARKFLEET
HOMES



Cromwell Fields
Upwood Road, Bury
Cambridgeshire **PE26 2PA**

Tel **01778 391 550**
Email newhomes@larkfleethomes.co.uk
www.larkfleethomes.co.uk



CF0321

