



Scholars Way, Ashford

£240,000

50 Scholars Way

Ashford, Ashford

Ideal for urban living, this two-bed apartment with modern kitchen and Juliette balcony is priced at £240,000. With allocated parking and close to Victoria Park, it's a stylish retreat in a vibrant location, perfect for first-time buyers seeking a contemporary city lifestyle.

Council Tax band: B

Tenure: Leasehold

- £240,000
- Two Bedroom Apartment
- No Onward chain
- Juliette Balcony
- Intergrated Appliances
- Allocated Parking
- Long Lease
- Close to Victoria Park and local amenities
- Ideal first time buy



Communal Entrance Hallway

Entrance Hallway

Open-Plan Living Room/Kitchen

15' 3" x 18' 5" (4.66m x 5.62m)

Bedroom

14' 1" x 9' 11" (4.28m x 3.03m)

Bedroom

8' 6" x 14' 6" (2.59m x 4.42m)

Bathroom



ALLOCATED PARKING

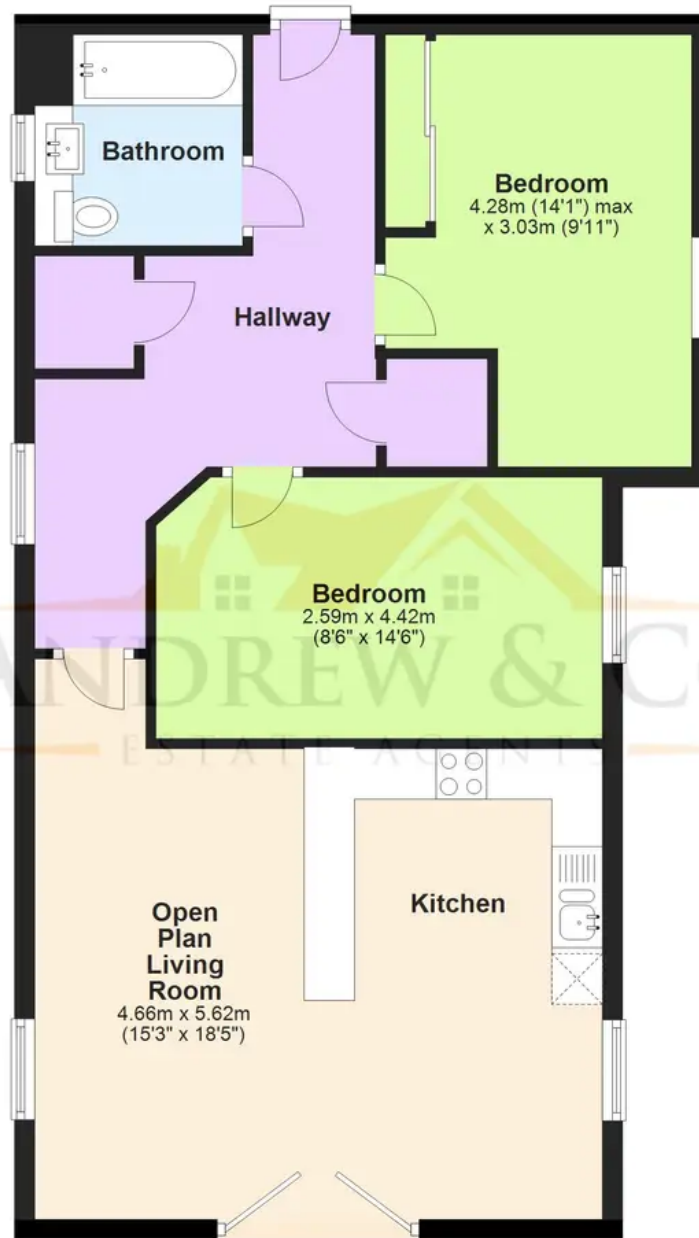
1 Parking Space





First Floor

Approx. 69.7 sq. metres (750.3 sq. feet)



Total area: approx. 69.7 sq. metres (750.3 sq. feet)

Plans are for layout purposes only and not drawn to scale, with any doors, windows and other internal features merely intended as a guide.
Plan produced using PlanUp.

These particulars are intended to give a fair and reliable description of the property but no responsibility for any inaccuracy or error can be accepted and do not constitute an offer or contract. We have not tested any services or appliances (including central heating if fitted) referred to in these particulars and purchasers are advised to satisfy themselves as to the working order and condition, if a property is unoccupied at any time there may be reconnection charges for any switched off/disconnected or drained services or appliances. All measurements are approximate.

Andrew & Co Estate Agents - Ashford

01233 632383

info@andrewandco.co.uk

