



3 Lime Court, Kennington

In Excess of £210,000

3 Lime Court

Kennington, Ashford

A modern first-floor apartment, enjoying built-in wardrobes to both bedrooms, en-suite to bedroom 1, allocated parking for 1 car and offered for sale with no onward chain.

Council Tax band: B

Tenure: Leasehold

- Two-bedroom first floor apartment
- Open-plan living room/kitchen
- Built-in wardrobes to both bedrooms
- Gas central heating
- Popular Kennington location
- Allocated parking for 1 car
- New boiler fitted in 2022
- No onward chain



Communal Entrance

Communal entrance hallway with stairs to first floor.

Hallway

Entrance door from communal hallway, storage cupboard, doors to each room, entry phone, alarm panel, laminate wood flooring.

Open-plan Living Room/Kitchen

15' 3" x 21' 10" (4.65m x 6.65m)

Open/plan living space, window to the side with Juliet balcony to the front. Storage cupboard, radiator, laminate wood flooring. Modern kitchen with built-in appliances including an electric oven, 4- ring gas hob and extractor hood over, washing machine, fridge & freezer. Wall and base units with work surfaces over and inset 1.5 now stainless steel sink/drainers. Tiled splash back. Window to the front.

Bedroom 1

15' 3" x 10' 10" (4.65m x 3.31m)

Window to the side, Juliet balcony to the rear, built-in wardrobe, radiator, fitted carpet.

En Suite

Comprising a large rectangular shower cubicle with sliding door and thermostatic shower, WC, wash basin, extractor fan, shaver socket, radiator, partly tiled walls and laminate wood flooring. Window to the side.

Bedroom 2

13' 0" x 7' 3" (3.96m x 2.20m)

Window to the rear, built-in wardrobe, radiator, fitted carpet.

Bathroom

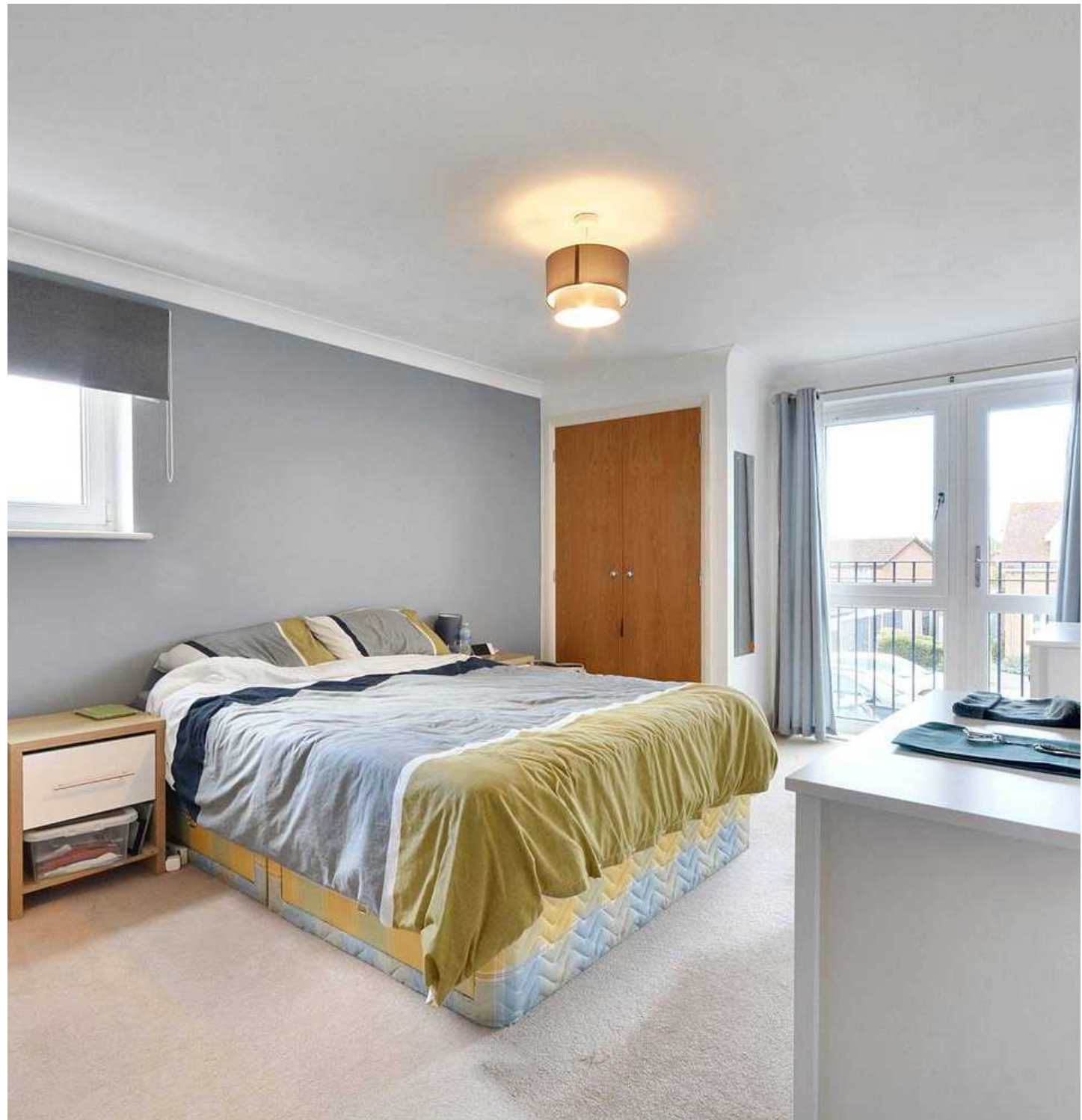
Comprising a bath with mixer tap and hand shower attachment, WC, wash basin, extractor fan, whatever socket, radiator, partly tiled walls and laminate wood flooring.



ALLOCATED PARKING

1 Parking Space

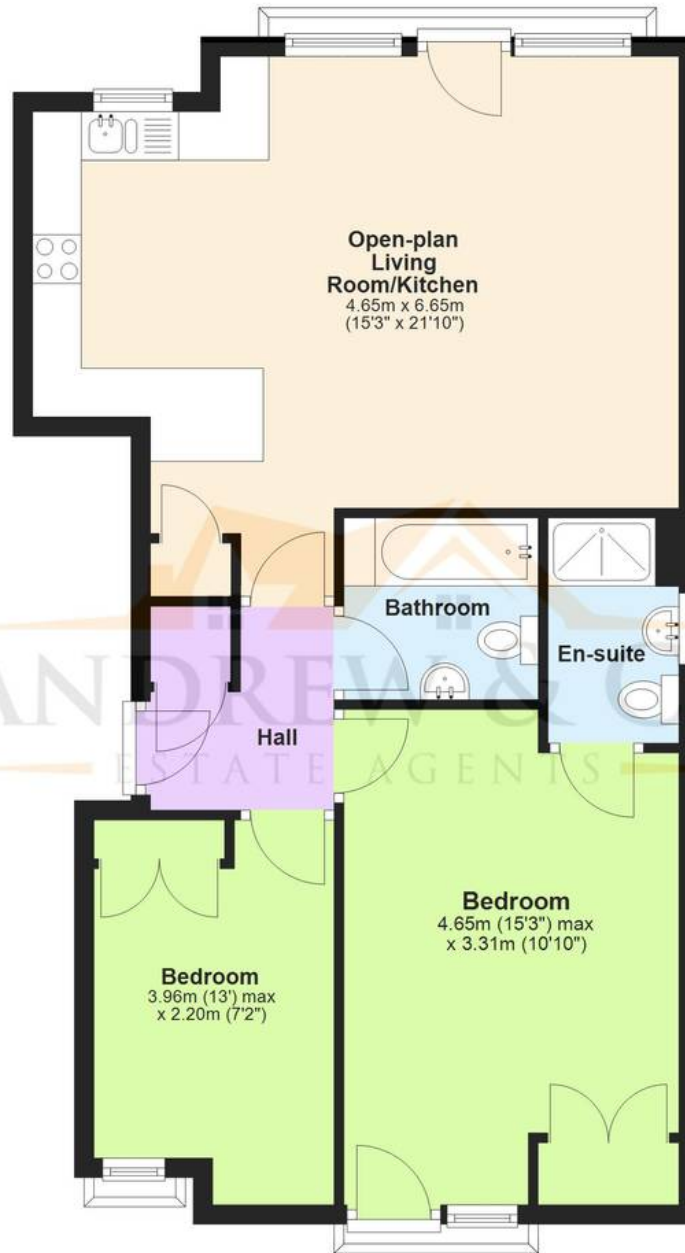
1 allocated parking space within the private car park.
Numerous visitor parking bays.





First Floor

Approx. 67.7 sq. metres (728.8 sq. feet)



Total area: approx. 67.7 sq. metres (728.8 sq. feet)

Plans are for layout purposes only and not drawn to scale, with any doors, windows and other internal features merely intended as a guide.
Plan produced using PlanUp.

These particulars are intended to give a fair and reliable description of the property but no responsibility for any inaccuracy or error can be accepted and do not constitute an offer or contract. We have not tested any services or appliances (including central heating if fitted) referred to in these particulars and purchasers are advised to satisfy themselves as to the working order and condition, if a property is unoccupied at any time there may be reconnection charges for any switched off/disconnected or drained services or appliances. All measurements are approximate.

Andrew & Co Estate Agents - Ashford

01233 632383

info@andrewandco.co.uk

